

NEC3 Engineering and Construction Short Contract (ECSC)

Transnet SOC Ltd

(REGISTRATION NO.1990/000900/30)

trading as

Transnet Freight Rail

Tender No. PTH 53448CIDB

**EMERGENCY REPAIRS AND MINOR ROAD MAINTENANCE
WORK (CIVIL) TO TRANSNET ASSETS IN THE PORT ELIZABETH
AREA FOR A PERIOD OF ONE YEAR OR UNTIL THE TOTAL
PAYMENT HAS REACHED R 500 000.00 (VAT excl.) WHICHEVER
OCCURS FIRST.**

Issue Date: Wed, 08 April 2015

Closing Date: Tue, 28 April 2015 at 12:00

CONTENTS

Document reference	Title: EMERGENCY REPAIRS AND MINOR ROAD MAINTENANCE WORK (CIVIL) TO TRANSNET ASSETS IN THE PORT ELIZABETH AREA FOR A PERIOD OF ONE YEAR OR UNTIL THE TOTAL PAYMENT HAS REACHED R 500 000.00 (VAT excl.) WHICHEVER OCCURS FIRST.
Part T1	THE TENDER Tendering procedures
T1.1	Tender Notice and Invitation to Tender ➤ Suppliers Code of Conduct
T1.2	Tender Data
Part T2	Returnable documents
T2.1	List of Returnable Documents
Part C1.1	THE CONTRACT CONTRACT DATA Agreement and Contract Data Contractor's Offer and Employer's Acceptance Contract Data Pricing Instructions Price List Works Information Site Information Specifications
Part C1.2	Adjudicator's Contract Data Secondary specifications Principal Controlled Insurance

PART T1: TENDERING PROCEDURES

"PREVIEW COPY ONLY"

PART T1: TENDERING PROCEDURES

T1.1 TENDER NOTICE AND INVITATION TO TENDER

RFQ NO. PTH 53448CIDB

1. QUOTATION REQUEST

Responses to this RFQ [hereinafter referred to as a **Quotation**] are requested from persons, companies, close corporations or enterprises [hereinafter referred to as an **entity, Respondent or Bidder**] for the provision of the **EMERGENCY REPAIRS AND MINOR ROAD MAINTENANCE WORK (CIVIL) TO TRANSNET ASSETS IN THE PORT ELIZABETH AREA FOR A PERIOD OF ONE YEAR OR UNTIL THE TOTAL PAYMENT HAS REACHED R 500 000.00 (VAT excl.) WHICHEVER OCCURS FIRST** to Transnet.

Tenderers should have a CIDB contractor grading designation of **2CE** or higher. Potentially emerging enterprises (**1CEPE**) who satisfy criteria stated in the Tender Data may submit tender offers. Only Tenderers, who are registered with the CIDB, are eligible to submit tenders.

On or after **08 April 2015**, the RFQ documents may be inspected at, and are obtainable from the Regional Supply Chain Office, FC Sturrock Building, 2nd Floor, Room 204, Fleming Street, Port Elizabeth.

Arrangements for the collection of RFQ documents can be made with the following Transnet representative:

Me. Ronelle Blom / Ms Phumla Maldaka

Tel: 041 507 2721 / 2720

E-mail: Ronelle.blom@transnet.net or Phumla.maldaka@transnet.net

No RFQ/tender fee is applicable and will be issued "FREE OF CHARGE" to all respondents.

Any additional information or clarification will be faxed or emailed to all Respondents, if necessary.

Queries relating to the **administrative issues** of these documents may be addressed to:

Mr. Wesley van Heerden

E mail: Wesley.vanheerden@transnet.net

2 BRIEFING

A **Compulsory** RFQ briefing will be conducted at FC Sturrock Building, 2nd Floor, Room 215, Port Elizabeth on Thursday, 16 April 2015 starting at 09h00. [Respondents to provide own transportation and accommodation].

- a) A Certificate of Attendance must be completed and submitted with your Response as proof of attendance required for a compulsory site meeting and RFQ briefing.
- b) Respondents failing to attend the compulsory RFQ briefing will be disqualified.
- c) Respondents without a valid RFQ document in their possession will not be allowed to attend the RFQ briefing.

- d) The briefing session will start punctually at 09:00 and information will not be repeated for the benefit of Respondents arriving late.

This tender closes punctually at 12:00 hrs on Tuesday, 28 April 2015.

If responses are not delivered as stipulated herein, such responses will not be considered and will be treated as "NON-RESPONSIVE" and will be disqualified.

The responses to this RFQ will be opened as soon as practicable after the expiry of the time advertised for receiving them.

Transnet shall not, at the opening of responses, disclose to any other company any confidential details pertaining to the Proposals / information received, i.e. pricing, delivery, etc. The names and locations of the Respondents will be divulged to other Respondents upon request.

Envelopes must not contain documents relating to any RFQ other than that shown on the envelope.

No slips are to be attached to the response documents. Any additional conditions must be embodied in an accompanying letter. Alterations, additions or deletions should not be made by the Respondent to RFQ documents. Any alterations must be initialed by the person who signs the Bid Documents

Tenders may only be submitted on the tender documentation that is issued. Telegraphic, telephonic, facsimile, email and late tenders will not be accepted.

Tenders submitted by Tenderers must be neatly bound and the inclusion of loose documents must be avoided.

Requirements for sealing, addressing, delivery, opening and assessment of tenders are stated in the Tender Data.

Compliance of tender(s) with Transnet's requirements is the sole responsibility of the Tenderer and any costs incurred in subsequent modifications to or replacement of equipment accepted by Transnet SOC Ltd in good faith on the grounds of certified compliance with specified standards by the contractor and in fact found to be inadequate in such respects, will be to the relevant Tenderer's account.

3 BROAD-BASED BLACK ECONOMIC EMPOWERMENT [B-BBEE]

Transnet fully endorses and supports the Government's Broad-Based Black Economic Empowerment Programme and it would therefore prefer to do business with local business enterprises who share these same values. As described in more detail in the attached B-BBEE Claim Form Transnet will allow a "preference" to companies who provide a valid B-BBEE Verification Certificate.

The value of this bid is estimated to be below R1 000 000 (all applicable taxes included); and therefore the **80/20** system shall be applicable.

Respondents are required to complete Annexure A [the B-BBEE Preference Point Claim Form] and submit it together with proof of their B-BBEE Status as stipulated in the Claim Form in order to obtain preference points for their B-BBEE status.

Note: Failure to submit a valid and original B-BBEE certificate or a certified copy thereof at the Closing Date of this RFQ will result in a score of zero being allocated for B-BBEE.

"PREVIEW COPY ONLY"

4 Communication

Respondents are warned that a response will be liable for disqualification should any attempt be made by a Respondent either directly or indirectly to canvass any officer(s) or employee of Transnet in respect of this RFQ between the closing date and the date of the award of the business.

A Respondent may, however, before the closing date and time, direct any written enquiries relating to the RFQ to the following Transnet employee:

Name: Wesley van Heerden

Email:

Wesley.vanheerden@transnet.net

Respondents may also, at any time after the closing date of the RFQ, communicate with the following Transnet employee on any matter relating to its RFQ response:

Me. Ronelle Blom / Ms Phumla Maldaka

Tel: 041 507 2721 / 2720

E-mail: Ronelle.blom@transnet.net or Phumla.maldaka@transnet.net

5 Tax Clearance

The Respondent's original and valid Tax Clearance Certificate must accompany the Quotation. Note that no business shall be awarded to any Respondent whose tax matters have not been declared by SARS to be in order.

6 VAT Registration

The valid VAT registration number must be stated here: _____
[if applicable].

7 Legal Compliance

The successful Respondent shall be in full and complete compliance with any and all applicable national and local laws and regulations.

8 Changes to Quotations

Changes by the Respondent to its submission will not be considered after the closing date and time.

9 Pricing

All prices must be quoted in South African Rand on a fixed price basis, excluding VAT.

10 Prices Subject to Confirmation

Prices quoted which are subject to confirmation will not be considered.

11 Negotiations

Transnet reserves the right to undertake post-tender negotiations with selected Respondents or any number of shortlisted Respondents.

12 Binding Offer

Any Quotation furnished pursuant to this Request shall be deemed to be an offer. Any exceptions to this statement must be clearly and specifically indicated.

13 Disclosure of Prices Quoted

Respondents must indicate here whether Transnet may disclose their quoted prices and conditions to other Respondents:

YES		NO	
-----	--	----	--

14 Disclaimers

Transnet is not committed to any course of action as a result of its issuance of this RFQ and/or its receipt of a Quotation in response to it.

Please note that Transnet reserves the right to:

- modify the RFQ's service(s) and request Respondents to re-bid on any changes;
- reject any Quotation which does not conform to instructions and specifications which are detailed herein;
- disqualify Quotations submitted after the stated submission deadline;
- not necessarily accept the lowest priced Quotation;
- reject all Quotations, if it so decides;
- place an order in connection with this Quotation at any time after the RFQ's closing date;
- award only a portion of the proposed service/s which are reflected in the scope of this RFQ;
- split the award of the order/s between more than one Supplier/Service Provider; or
- make no award at all.
- Transnet reserves the right to award business to the highest scoring bidder/s unless objective criteria justify the award to another bidder.

Should a contract be awarded on the strength of information furnished by the Respondent, which after conclusion of the contract, is proved to have been incorrect, Transnet reserves the right to cancel the contract.

Transnet reserves the right to award business to the highest scoring bidder/s unless objective criteria justify the award to another bidder.

Transnet reserves the right to conduct Post Tender Negotiations (PTN) with selected Respondents or any number of short-listed Respondents, such PTN to include, at Transnet's discretion, any evaluation criteria listed in the RFQ document.

Should the preferred bidder fail to sign or commence with the contract within a reasonable period after being requested to do so, Transnet reserves the right to award the business to the next highest ranked bidder, provided that he/she is still prepared to provide the required goods at the quoted price.

15 Transnet's supplier integrity pact

Transnet's Integrity Pact requires a commitment from suppliers and Transnet that they will not engage in any corrupt and fraudulent practices, anti-competitive practices; and act in bad faith towards each other. The Integrity Pact also serves to communicate Transnet's Gift Policy as well as the remedies available to Transnet where a Respondent contravenes any provision of the Integrity Pact. Respondents are required to familiarise themselves with the contents of the Integrity Pact which is available on the Transnet Internet site [www.transnet.net/Tenders/Pages/default.aspx] or on request.

Furthermore, Respondents are required to certify that they have acquainted themselves with all the documentation comprising the Transnet Integrity Pact and that they fully comply with all the terms and conditions stipulated in the Transnet Supplier Integrity Pact as follows:

YES		NO	
-----	--	----	--

Should a Respondent need to declare previous transgressions or a serious breach of law in the preceding 5 years as required by Annexure A to the Integrity Pact, such declaration must accompany the Respondent's bid submission.

16 INSTRUCTIONS FOR COMPLETING THE RFQ

- Proposals must be submitted in 1 original hard copy and must be bound.
- The documents are to be submitted to the address specified in paragraph above.
- **All returnable documents tabled in the Proposal Form must be returned with your Proposal.**
- Unless otherwise expressly stated, all Proposals furnished pursuant to this RFQ shall be deemed to be offers. Any exceptions to this statement must be clearly and specifically indicated.
- Any additional conditions must be embodied in an accompanying letter. Alterations, additions or deletions must not be made by the Respondent to the actual RFQ documents.

17 COMPLIANCE

The successful Respondent [hereinafter referred to as the **Service Provider**] shall be in full and complete compliance with any and all applicable laws and regulations.

18 LEGAL REVIEW

A Proposal submitted by a Respondent will be subjected to review and acceptance or rejection of its proposed contractual terms and conditions by Transnet's Legal Counsel, prior to consideration for an award of business.

**Transnet urges its clients, suppliers and the general public
to report any fraud or corruption to
TIP-OFFS ANONYMOUS : 0800 003 056**

PART T1.2: TENDER DATA

T1.2 Tender Data

The conditions of tender are the Standard Conditions of Tender as contained in Annex F of the CIDB Standard for Uniformity in Construction Procurement (January 2009) as published in Government Gazette No 31823, Board Notice 12 of 2009 of 30 January 2009, subsequently amended (May 2010), Board Notice 86 of 2010. (See www.cidb.org.za)

The Standard Conditions of Tender make several references to Tender Data for details that apply specifically to this tender. This Tender Data shall have precedence in the interpretation of any ambiguity or inconsistency between it and the Standard Conditions of Tender.

Each item of data given below is cross-referenced in the left hand column to the clause in the Standard Conditions of Tender to which it mainly applies.

Clause	Data
F.1.1 The <i>Employer</i> is	Transnet SOC Ltd (Reg No. 1990/000900/30)
F.1.2 The tender documents issued by the <i>Employer</i> comprise:	
Part T: The Tender	
Part T1: Tendering procedures	T1.1 Tender notice and invitation to tender T1.2 Tender data
Part T2 : Returnable documents	T2.1 List of returnable documents T2.2 Returnable schedules
Part C: The contract	
Part C1: Agreements and contract data	Form of offer and acceptance Contract data Pricing instructions Price List Works Information Site information
Part C1.2: Adjudicator's Contract Data	
Secondary Specifications	
Principal Controlled Insurance	
F.1.4 The Employer's agent is:	Transnet Freight Rail
Name:	Mr G Valentine
Address:	TFR Real Estate Management – Port Elizabeth
Tel No.	(041) 507 4147
F1.6 The competitive negotiation procedure may be applied.	

"PREVIEW COPY ONLY"

F.2.1 Only those tenderers who satisfy the following eligibility criteria are eligible to submit tenders:

1. Only those tenderers who are registered with the CIDB, or are capable of being so prior to the evaluation of submissions, in a contractor grading designation equal to or higher than a contractor grading designation determined in accordance with the sum tendered or a value determined in accordance with Regulation 25 (1B) or 25(7A) of the Construction Industry Development Regulations, for a 2 CE or higher class of construction work, are eligible to have their tenders evaluated.

Joint ventures are eligible to submit tenders provided that:

1. every member of the joint venture is registered with the CIDB;
2. the lead partner has a contractor grading designation in the 2 CE or higher class of construction work; and
3. the combined *Contractor* grading designation calculated in accordance with the Construction Industry Development Regulations is equal to or higher than a *Contractor* grading designation determined in accordance with the sum tendered for a 2 CE or higher class of construction work or a value determined in accordance with Regulation 25 (1B) or 25(7A) of the Construction Industry Development Regulations.

2. Pre-Qualifying, Quality (Functionality) Criteria, Price and Preference

Prequalification

Step 1: Administrative Responsiveness:

All Returnable Documents/Schedules provided: Mandatory and Essential

Step 2: Substantive Responsiveness:

All Mandatory documents complete and correct and acceptable response to any clarification on Essential documentation:

Mandatory Documentation: Completed and Signed Form of Offer and Completed Price List

Pre-Qualification Compliance:

Satisfactory proof of bidder or his/her staff's qualifications for the task required.

- Acceptable proof of qualifications shall be:
 - Operator Certificate and Drivers Licenses.

Only those bidders who submits the above documentation for Pre-Qualification will be eligible for further evaluation, failure to meet this requirement will result in the tender being disqualified and removed from further consideration

The quality criteria and maximum score in respect of each of the criteria are as follows:

Step 3

Quality criteria – Minimum Threshold of 50%	Maximum number of points
Comparable projects (References / Track Record)	100
Maximum possible score for quality (W_Q)	100

Only those tenderers who attain the minimum number of evaluation points for functionality will be eligible for further evaluation, failure to meet the minimum threshold will result in the tender being disqualified and removed from further consideration

The minimum number of evaluation points for quality is : 50

Each evaluation criteria will be assessed in terms of Five indicators – no response, poor, satisfactory, good and very good. Scores of 0, 40, 70, 90 or 100 will be allocated to poor, satisfactory, good and very good, respectively. The scores of each of the evaluators will be averaged, weighted and then totalled to obtain the final score for quality, unless scored collectively. (See CIDB Inform Practice Note #9)

Note: Any tender not complying with the above mentioned stipulation, numbered 1 and 2 will be regarded as non-responsive and will therefore not be considered for further evaluation

Step 4: Financial offer and Preference

Score the financial offers of remaining responsive offers using the following formula:

$$T_{EV} = N_{FO} + N_P$$

where:

N_{FO} is the number of tender evaluation points awarded for the financial offer made in accordance with F.3.11.7;

N_P is the number of tender evaluation points awarded for preferences claimed in accordance with F.3.11.8.

Description of quality criteria and sub criteria			Max no of points
Commercial	Competitive Pricing	100	80
BBBEE	Points scored	100	20
Total evaluation points			100

F.2.7 The arrangements for a compulsory clarification meeting are as stated in the Tender Notice and Invitation to Tender.
Tenderers must sign the attendance list in the name of the tendering entity. Addenda will be issued to and tenders will be received only from those tendering entities appearing on the attendance list.

F.2.12 No alternative tender offers will be considered

F.2.13.3 Parts of each tender offer communicated on paper shall be as an original.

F.2.13.5 The Employer's details and address for delivery of tender offers and identification details that are to be shown on each tender offer package are:

Location of tender box: 2nd Floor

Physical address: Transnet SOC Limited
Secretariat of the Acquisition Council, Admin Support Office
Room 213, 2nd Floor
FC Sturrock Building
Fleming Street
Port Elizabeth
6001

Identification details: The tender documents must be submitted in a sealed envelope labelled with:

- The Tender Description, The Tender Number
- Closing date and Time: 28 April 2015 at 12h00
- Closing Address: (Refer to abovementioned options)

All envelopes must reflect the return address of the Respondent on the reverse side.



F.2.13.9	Telephonic, telegraphic, facsimile or e-mailed tender offers will not be accepted.
F.2.15	The closing time for submission of tender offers is as stated in the Tender Notice and Invitation to Tender.
F.2.16	The tender offer validity period is 12 weeks
F.2.20	If requested, submit for the <i>Employer's</i> acceptance before formation of the contract, all securities, bonds, guarantees, policies and certificates of insurance required in terms of the conditions of contract identified in the Contract Data.
F.2.23	The tenderer is required to submit with his tender: <ol style="list-style-type: none"> 1. an original or a certified copy of a valid Tax Clearance Certificate issued by the South African Revenue Services; 2. A valid SANAS B-BBEE accreditation certificate, 3. Letter of Good Standing 4. All Returnable Documents listed in Section T2.1.
F.3.4	The time and location for opening of the tender offers are: Time 12:15 on Tuesday, 28 April 2015 Location: 2 nd Floor, FC Sturrock Building, Fleming Street, Port Elizabeth
F.3.11.3	The procedure for the evaluation of responsive tenders is Method 2. The financial offer will be scored using Formula 2 (option 1) in Table F.1 where the value of W_1 is: 80 where the financial value inclusive of VAT of one or more responsive tenders received have a value in excess of R 1,000 000 Up to 100 minus W_1 tender evaluation points will be awarded to tenderers who complete the preferencing schedule and who are found to be eligible for the preference claimed. Should the BBBEE rating not be provided, Transnet reserves the right to award no points and/or declare the tender void. Transnet also reserves the right to carry out an independent audit of the tenderers scorecard components at any stage from the date of close of the tenders until completion of the contract. Tenderers with no accreditation will score zero points for preference.
F.3.13	Tender offers will only be accepted if: <ol style="list-style-type: none"> a) the tenderer is registered with the Construction Industry Development Board in an appropriate contractor grading designation; b) the tenderer or any of its directors/shareholders is not listed on the Register of Tender Defaulters in terms of the Prevention and Combating of Corrupt Activities Act of 2004 as a person prohibited from doing business with the public sector; c) the tenderer does not appear on Transnet list for restricted tenderers. d) the tenderer has completed the Compulsory Enterprise Questionnaire and there are no conflicts of interest which may impact on the tenderer's ability to perform the contract in the best interests of the Employer or potentially compromise the tender process and persons in the employ of the state are permitted to submit tenders or participate in the contract; e) the tenderer is registered and in good standing with the compensation fund or with a licensed compensation insurer; f) the Employer is reasonably satisfied that the tenderer has in terms of the Construction Regulations, 2003, issued in terms of the Occupational Health and Safety Act, 1993, the necessary competencies and resources to carry out the work safely.
F.3.17	The number of paper copies of the signed contract to be provided by the Employer is 1 (one).

F.3.18 The additional conditions of tender are:

The Tenderer is deemed to have satisfied himself before tendering as to the correctness and sufficiency of his tender for the *Works* and of the rates and prices stated in the priced Price List in the *Works* Information. The rates and prices (except in so far as otherwise provided in the Tender) collectively cover full payment for the discharge of all his obligations under the Contract and all matters and things necessary for the proper completion of the *works*.

- a) Notwithstanding what is stated in Pricing Data, Tenderers are required to tender for **all** the areas quoted in the Price List.
- b) Transnet Freight Rail may conclude one or more contracts as a result of this tender.
- c) The tenders shall be completed in black ink only.

- d) Tenderers are advised that it is compulsory to submit offers for all Tender Options as set out below: **Option 2 – Fixed Price Offer**

Tenderers are advised that all rates, amounts, overhead and profit percentage mark-ups and amounts, profit and attendance amounts, prices, etc. submitted, shall **not be subject to any form of Contract Price Adjustment Formulae e.g. Haylett Formulae.**

In this regard, it is deemed that the Tenderer has allowed for any potential increases (except any variation in the rate of Value Added Tax) in cost of labour, materials, transport, etc. in the Tender amounts, rates, etc. submitted.

This will only be applicable to the measured work priced by the main contractor and will not apply to the provisional sums or budgetary allowances.

- e) **Market Related Wage Rates**

When pricing this document, respondents are to allow for wages, which are not less than the lesser of:

- The statutory wage rates in any labour category in the project locality; and,
- The SAFCEC recommended minimum rates applicable at any time during the duration of the contract.

In this regard, a Tenderer may be called upon to demonstrate the wage rates utilised in calculating its Tender prices, etc.

The employer reserves the right to reject responses to the Tender that do not comply with this condition.

- f) **Letter of Intent**

For contracts with an anticipated value for R500 000.00 and above, Tenderers are required to furnish with their tender documents, a letter of intent from a Bank or approved Insurance Company, to indicate that in the event of their tender being successful that a performance bond as required will be provided when asked to do so.

- g) **Change in the Scope of Work**

Tenderers are advised that whilst preliminary space planning drawings have been prepared for this project and an estimated project value has been provided, the scope of work and value of the contract may be substantially altered. In this regard, Tenderers are advised that no claims for loss and expense shall be entertained for the employer implementing any changes that may become necessary. It shall be deemed that the Tenderer has allowed for any costs that may arise due to compliance with this clause in the Tender amounts offered.

- h) **Interviews**

All Tenderers are advised that they may be required to attend interviews and / or submit further information; including making their premises, plant, equipment and details of works in progress, available for inspection after the receipt of all Tender submissions.

- i) **Indicative Programme**

Tenderers are advised that should an indicative programme be included in the set of Tender documents it is not intended to be prescriptive. It should be used as a guide only.

PART T2: RETURNABLE DOCUMENTS

"PREVIEW COPY ONLY"

PART T2: RETURNABLE DOCUMENTS

T2.1 LIST OF RETURNABLE DOCUMENTS

The tenderer must complete the following returnable documents:

Returnable Documents means all the documents, Sections and Annexures, as listed in the tables below.

- a) Respondents are required to submit with their Quotations the **Mandatory Returnable Documents**, as detailed below.

Failure to provide all these Returnable Documents at the Closing Date and time of this RFQ will result in a Respondent's disqualification. Respondents are therefore urged to ensure that all these Documents are returned with their Quotations.

1. Returnable Schedules required for tender evaluation purposes

No.	Essential Returnable Documents
1	Valid and original B-BBEE Verification Certificate or certified copy thereof [Large Enterprises and QSEs] Note: failure to provide a valid B-BBEE Verification Certificate at the closing date and time of the RFQ will result in an automatic score of zero for preference.
2	Valid and original B-BBEE certificate/sworn affidavit or certified copy thereof from auditor, accounting officer or SANAS accredited Verification Agency [EMEs] Note: failure to provide a valid B-BBEE Verification Certificate at the closing date and time of the RFQ will result in an automatic score of zero being allocated for preference
3	In the case of Joint Ventures, a copy of the Joint Venture Agreement or written confirmation of the intention to enter into a Joint Venture Agreement
4	Original valid Tax Clearance Certificate [Consortia / Joint Ventures must submit a separate Tax Clearance Certificate for each party]
5	Qualifications of Bidder or Staff that will be performing tasks. (Pre-Qualification Requirement)
6	Certificate of Authority for Signatory (Resolution by Board)
7	Original letter of good standing issued by compensation Commissioner
8	Tenderer's Experience
9	Certificate of Attendance of RFQ Briefing Session
10	Proof of CIDB Grading
11	Acknowledgement Form
12	ANNEXURE A : B-BBEE Preference Points Claim Form
13	ANNEXURE B : RFQ Declaration Form
14	ANNEXURE C : Supplier Code of Conduct

Mandatory Returnable Documents	Submitted [Yes/No]
• Signed Form of Offer and Acceptance	
• Completed Price List	

ACKNOWLEDGEMENT

By signing this RFQ document, the Respondent is deemed to acknowledge that he/she has made himself/herself thoroughly familiar with all the conditions governing this RFQ, including those contained in any printed form stated to form part hereof and Transnet SOC Ltd will recognise no claim for relief based on an allegation that the Respondent overlooked any such condition or failed to properly take it into account for the purpose of calculating quoted prices or otherwise.

SIGNED at _____ on this _____ day of _____ 20____

SIGNATURE OF RESPONDENT'S AUTHORISED REPRESENTATIVE

NAME: _____

DESIGNATION: _____

REGISTERED NAME OF COMPANY: _____

PHYSICAL ADDRESS: _____

Respondent's contact person: *[Please complete]*

Name	:	
Designation	:	
Telephone	:	
Cell Phone	:	
Facsimile	:	
Email	:	
Website	:	

**Transnet urges its clients, suppliers and the general public
to report any fraud or corruption to
TIP-OFFS ANONYMOUS: 0800 003 056**



ANNEXURE B RFQ DECLARATION FORM

RFQ for VEGETATION CONTROL IN STATION YARDS BY MEANS OF CHEMICAL HERBICIDE

NAME OF COMPANY: _____

We _____ do hereby certify that:

1. Transnet has supplied and we have received appropriate responses to any/all questions (as applicable) which were submitted by ourselves for bid clarification purposes;
2. we have received all information we deemed necessary for the completion of this Request for Proposal (RFQ);
3. at no stage have we received additional information relating to the subject matter of this RFQ from Transnet sources, other than information formally received from the designated Transnet contact(s) as nominated in the RFQ documents;
4. we are satisfied, insofar as our company is concerned, that the processes and procedures adopted by Transnet in issuing this RFQ and the requirements requested from bidders in responding to this RFQ have been conducted in a fair and transparent manner; and
5. furthermore, we acknowledge that a direct relationship exists between a family member and/or an owner / member / director / partner / shareholder (unlisted companies) of our company and an employee or board member of the Transnet Group as indicated below: *[Respondent to indicate if this section is not applicable]*

FULL NAME OF OWNER/MEMBER/DIRECTOR/
PARTNER/SHAREHOLDER:

ADDRESS:

Indicate nature of relationship with Transnet:

[Failure to furnish complete and accurate information in this regard may lead to the disqualification of your response and may preclude a Respondent from doing future business with Transnet]



6. We declare, to the extent that we are aware or become aware of any relationship between ourselves and Transnet (other than any existing and appropriate business relationship with Transnet) which could unfairly advantage our company in the forthcoming adjudication process, we shall notify Transnet immediately in writing of such circumstances.
7. We accept that any dispute pertaining to this bid will be resolved through the Ombudsman process and will be subject to the Terms of Reference of the Ombudsman. The Ombudsman process must first be exhausted before judicial review of a decision is sought. (Refer "Important Notice to Respondents" overleaf).
8. We further accept that Transnet reserves the right to reverse a tender award or decision based on the recommendations of the Ombudsman without having to follow a formal court process to have such award or decision set aside.

SIGNED at _____ on this _____ day of _____ 20____

For and on behalf of duly authorised thereto	AS WITNESS:
Name:	Name:
Position:	Position:
Signature:	Signature:
Date:	
Place:	

IMPORTANT NOTICE TO RESPONDENTS

- Transnet has appointed a Procurement Ombudsman to investigate any material complaint in respect of RFQ's exceeding R 5,000,000.00 (five million S.A. Rands) in value. Should a Respondent have any material concern regarding an RFQ process which meets this value threshold, a complaint may be lodged with Transnet's Procurement Ombudsman for further investigation.
- It is incumbent on the Respondent to familiarise himself/herself with the Terms of Reference for the Transnet Procurement Ombudsman, details of which are available for review at Transnet's website www.transnet.net.
- An official complaint form may be downloaded from this website and submitted, together with any supporting documentation, within the prescribed period, to procurement.ombud@transnet.net
- For transactions below the R 5,000,000.00 (five million S.A. Rand) threshold, a complaint may be lodged with the Chief Procurement Officer of the relevant Transnet Operating Division.
- All Respondents should note that a complaint must be made in good faith. If a complaint is made in bad faith, Transnet reserves the right to place such a bidder on its List of Excluded Bidders.

ANNEXURE C

SUPPLIER CODE OF CONDUCT

Transnet aims to achieve the best value for money when buying or selling goods and obtaining services. This however must be done in an open and fair manner that supports and drives a competitive economy. Underpinning our process are several acts and policies that any supplier dealing with Transnet must understand and support. These are:

The Transnet Supply Chain Policy

Section 217 of the Constitution - the five pillars of Public PSCM [Procurement and Supply Chain Management]: fairness, equity, transparency, competitiveness and cost effectiveness;

The Public Finance Management Act [**PFMA**];

The Preferential Procurement Policy Framework Act [**PPPFA**];

The Broad-Based Black Economic Empowerment Act [**B-BBEE**]; and

The Prevention and Combating of Corrupt Activities Act.

This Code of Conduct has been included in this RFP to formally apprise prospective Transnet Suppliers of Transnet's expectations regarding the behaviour and conduct of its Suppliers.

Prohibition of bribes, kickbacks, unlawful payments, and other corrupt practices

Transnet is in the process of transforming itself into a self-sustaining State Owned Company [**SOC**], actively competing in the logistics industry. Our aim is to become a world class, profitable, logistics organisation. As such, our transformation is focused on adopting a performance culture and to adopt behaviours that will enable this transformation.

- a) *Transnet will not participate in corrupt practices and therefore expects its Suppliers to act in a similar manner.*

Transnet and its employees will follow the laws of this country and keep accurate business records that reflect actual transactions and payments to our Suppliers.

Employees must not accept or request money or anything of value, directly or indirectly, to:

- illegally influence their judgement or conduct or to ensure the desired outcome of a sourcing activity;
- win or retain business or to influence any act or decision of any decision stakeholders involved in sourcing decisions; or
- gain an improper advantage.

There may be an occasion when a Supplier is confronted with fraudulent or corrupt behaviour by a Transnet employee. We expect our Suppliers to use our "Tip-offs Anonymous" Hot line to report these acts [0800 003 056].

- b) *Transnet is firmly committed to the ideas of free and competitive enterprise.*

Suppliers are expected to comply with all applicable laws and regulations regarding fair competition and antitrust.

Transnet does not engage with non-value adding agents or representatives solely for the purpose of increasing B-BBEE spend [fronting].

- c) *Transnet's relationship with Suppliers requires us to clearly define requirements, exchange information and share mutual benefits.*

Generally, Suppliers have their own business standards and regulations. Although Transnet cannot control the actions of our Suppliers, we will not tolerate any illegal activities. These include, but are not limited to:

- misrepresentation of their product [e.g. origin of manufacture, specifications, intellectual property rights];
- collusion;
- failure to disclose accurate information required during the sourcing activity [e.g. ownership, financial situation, B-BBEE status];
- corrupt activities listed above; and
- harassment, intimidation or other aggressive actions towards Transnet employees.

Suppliers must be evaluated and approved before any materials, components, products or services are purchased from them. Rigorous due diligence is conducted and the Supplier is expected to participate in an honest and straight forward manner.

Suppliers must record and report facts accurately, honestly and objectively. Financial records must be accurate in all material respects.

Conflicts of interest

A conflict of interest arises when personal interests or activities influence [or appear to influence] the ability to act in the best interests of Transnet. Examples include, but are not limited to:

Transnet employees awarding business to entities in which their family members or business associates have an interest

Transnet employees having a financial interest in a bidding entity

Bidding entities are required to disclose any interest/s which exist between themselves and any employee and/or Transnet Board member.

SIGNED at _____ on this _____ day of _____ 20____

SIGNATURE OF WITNESS

SIGNATURE OF RESPONDENT

Schedule of the Tenderer's Experience

The following is a statement of similar work successfully executed by myself/ourselves:

Employer, contact person and telephone number	Description of contract	Value of work Inclusive of VAT (Rand)	Date Completed

Signed _____ Date _____

Name _____ Position _____

Tenderer _____

Certificate of Attendance at Clarification/Site Meeting/s

This is to certify that

_____ (Tenderer)

of _____ (address)

was represented by the person(s) named below at the compulsory meetings held for all Tenderers on the dates listed below. We acknowledge that the purpose of the meeting was to acquaint ourselves with the Site of the Works and/or matters incidental to doing the work specified in the tender documents in order for us to take account of everything necessary when compiling our rates and prices included in the tender.

Particulars of Company representative(s) attending the **CLARIFICATION / SITE MEETING**:

Name: _____ Signature _____

Capacity: _____ Date and time _____

Attendance of the above person/s is confirmed by the Employer's representative:

Name: _____ Signature _____

Capacity: _____ Date and time _____

ANNEXURE A : B-BBEE PREFERENCE POINTS CLAIM FORM

This preference form contains general information and serves as a claim for preference points for Broad-Based Black Economic Empowerment [**B-BBEE**] Status Level of Contribution.

1. INTRODUCTION

- 1.1 A total of 20 preference points shall be awarded for B-BBEE Status Level of Contribution.
- 1.2 Failure on the part of a Bidder to fill in and/or to sign this form and submit a B-BBEE Verification Certificate from a Verification Agency accredited by the South African Accreditation System [**SANAS**] or a Registered Auditor approved by the Independent Regulatory Board of Auditors [**IRBA**] or an Accounting Officer as contemplated in the Close Corporation Act [**CCA**] together with the bid will be interpreted to mean that preference points for B-BBEE Status Level of Contribution are not claimed.
- 1.3 Transnet reserves the right to require of a Bidder, either before a Bid is adjudicated or at any time subsequently, to substantiate any claim in regard to preferences, in any manner required by Transnet.

2. GENERAL DEFINITIONS

- 2.1 **"all applicable taxes"** include value-added tax, pay as you earn, income tax, unemployment insurance fund contributions and skills development levies;
- 2.2 **"B-BBEE"** means broad-based black economic empowerment as defined in section 1 of the Broad-Based Black Economic Empowerment Act;
- 2.3 **"B-BBEE status of contributor"** means the B-BBEE status received by a measured entity based on its overall performance using the relevant scorecard contained in the Codes of Good Practice on Black Economic Empowerment, issued in terms of section 9(1) of the Broad-Based Black Economic Empowerment Act;
- 2.4 **"Bid"** means a written offer in a prescribed or stipulated form in response to an invitation by Transnet for the provision of goods, works or services;
- 2.5 **"Broad-Based Black Economic Empowerment Act"** means the Broad-Based Black Economic Empowerment Act, 2003 [Act No. 53 of 2003];
- 2.6 **"comparative price"** means the price after the factors of a non-firm price and all unconditional discounts that can be utilised have been taken into consideration;
- 2.7 **"consortium or joint venture"** means an association of persons for the purpose of combining their expertise, property, capital, efforts, skills and knowledge in an activity for the execution of a contract;
- 2.8 **"contract"** means the agreement that results from the acceptance of a bid by Transnet;
- 2.9 **"EME"** means any enterprise with an annual total revenue of R5 [five] million or less as per the 2007 version of the B-BBEE Codes of Good Practice and means any enterprise with an annual total

revenue of R10 [ten] million or less as per the Revised Codes of Good Practice issued on 11 October 2013 in terms of Government Gazette No. 36928;

- 2.10 **"firm price"** means the price that is only subject to adjustments in accordance with the actual increase or decrease resulting from the change, imposition, or abolition of customs and excise duty and any other duty, levy, or tax, which, in terms of the law or regulation, is binding on the contractor and demonstrably has an influence on the price of any supplies, or the rendering costs of any service, for the execution of the contract;
- 2.11 **"functionality"** means the measurement according to predetermined norms, as set out in the bid documents, of a service or commodity that is designed to be practical and useful, working or operating, taking into account, among other factors, the quality, reliability, viability and durability of a service and the technical capacity and ability of a bidder;
- 2.12 **"non-firm prices"** means all prices other than "firm" prices;
- 2.13 **"person"** includes reference to a juristic person;
- 2.14 **"QSE"** means any enterprise with an annual total revenue between R5 [five] million and R35 [thirty five] million as per the 2007 version of the B-BBEE Codes of Good Practice and means any enterprise with an annual total revenue of between R10 [ten] million and R50 [fifty] million as per the Revised Codes of Good Practice issued on 11 October 2013 in terms of Government Gazette No. 36928
- 2.15 **"rand value"** means the total estimated value of a contract in South African currency, calculated at the time of bid invitations, and includes all applicable taxes and excise duties;
- 2.16 **"subcontract"** means the primary contractor's assigning or leasing or making out work to, or employing another person to support such primary contractor in the execution of part of a project in terms of the contract;
- 2.17 **"total revenue"** bears the same meaning assigned to this expression in the Codes of Good Practice on Black Economic Empowerment, issued in terms of section 9(1) of the Broad-Based Black Empowerment Act and promulgated in the Government Gazette on 9 February 2007;
- 2.18 **"trust"** means the arrangement through which the property of one person is made over or bequeathed to a trustee to administer such property for the benefit of another person; and
- 2.19 **"trustee"** means any person, including the founder of a trust, to whom property is bequeathed in order for such property to be administered for the benefit of another person.

3. ADJUDICATION USING A POINT SYSTEM

- 3.1 The Bidder obtaining the highest number of total points for the evaluation criteria as enumerated in Section 2 of the RFP will be awarded the contract, unless objective criteria justifies the award to another bidder.
- 3.2 Preference points shall be calculated after prices have been brought to a comparative basis taking into account all factors of non-firm prices and all unconditional discounts.
- 3.3 Points scored will be rounded off to 2 [two] decimal places.
- 3.4 In the event of equal points scored, the Bid will be awarded to the Bidder scoring the highest

number of preference points for B-BBEE.

- 3.5 However, when functionality is part of the evaluation process and two or more Bids have scored equal points including equal preference points for B-BBEE, the successful Bid will be the one scoring the highest score for functionality.
- 3.6 Should two or more Bids be equal in all respect, the award shall be decided by the drawing of lots.

4. POINTS AWARDED FOR B-BBEE STATUS LEVEL OF CONTRIBUTION

- 4.1 In terms of the Preferential Procurement Regulations, 2011, preference points shall be awarded to a Bidder for attaining the B-BBEE status level of contribution in accordance with the table below:

B-BBEE Status Level of Contributor	Number of Points [Maximum 20]
1	20
2	18
3	16
4	12
5	8
6	6
7	4
8	2
Non-compliant contributor	0

- 4.2 Bidders who qualify as EMEs in terms of the 2007 version of the Codes of Good Practice must submit a certificate issued by an Accounting Officer as contemplated in the CCA or a Verification Agency accredited by SANAS or a Registered Auditor. Registered auditors do not need to meet the prerequisite for IRBA's approval for the purpose of conducting verification and issuing EME's with B-BBEE Status Level Certificates.
- 4.3 Bidders who qualify as EMEs in terms of the Revised Codes of Good Practice issued on 11 October 2013 in terms of Government Gazette No. 36928 are only required to obtain a sworn affidavit on an annual basis confirming that the entity has an Annual Total Revenue of R10 million or less and the entity's Level of Black ownership.
- 4.4 In terms of the 2007 version of the Codes of Good Practice, Bidders other than EMEs must submit their original and valid B-BBEE status level verification certificate or a certified copy thereof, substantiating their B-BBEE rating issued by a Registered Auditor approved by IRBA or a Verification Agency accredited by SANAS.
- 4.5 The Department of Trade and Industry recently revised the Codes of Good Practice on 11 October 2013 [Government Gazette No. 36928]. The Revised Codes will replace the Black Economic Empowerment Codes of Good Practice issued on 9 February 2007. The Revised Codes provide for a transitional period ending 30 April 2015. During the transitional period, companies may elect to be measured in terms of the Revised Codes or the 2007 version of the Codes. Companies which are governed by Sector-specific Codes will be measured in terms of those Sector Codes.

- 4.6 As such, Transnet will accept B-BBEE certificates issued based on the Revised Codes. Transnet will also continue to accept B-BBEE certificates issued in terms of the 2007 version of the Codes provided it was issued before 1 May 2015. Thereafter, Transnet will only accept B-BBEE certificates issued based on the Revised Codes.
- 4.7 In terms of the Revised Codes of Good Practice, Bidders who qualify as QSEs must comply with all the elements of B-BBEE for the purposes of measurement. QSEs that are at least 51% or 100% Black owned are only required to obtain a sworn affidavit on an annual basis confirming that the entity has an Annual Total Revenue of R50 million or less and the entity's Level of Black ownership. Large enterprises must submit their original and valid B-BBEE status level verification certificate or a certified copy thereof, substantiating their B-BBEE rating issued by a Registered Auditor approved by IRBA or a Verification Agency accredited by SANAS.
- 4.8 A trust, consortium or joint venture will qualify for points for its B-BBEE status level as a legal entity, provided that the entity submits its B-BBEE status level certificate.
- 4.9 A trust, consortium or joint venture will qualify for points for their B-BBEE status level as an unincorporated entity, provided that the entity submits their consolidated B-BBEE scorecard as if they were a group structure and that such a consolidated B-BBEE scorecard is prepared for every separate bid.
- 4.10 Tertiary institutions and public entities will be required to submit their B-BBEE status level certificates in terms of the specialised scorecard contained in the B-BBEE Codes of Good Practice.
- 4.11 A person will not be awarded points for B-BBEE status level if it is indicated in the Bid documents that such a Bidder intends subcontracting more than 25% [twenty-five per cent] of the value of the contract to any other enterprise that does not qualify for at least the same number of points that such a Bidder qualifies for, unless the intended subcontractor is an EME that has the capability and ability to execute the subcontract.
- 4.12 A person awarded a contract may not subcontract more than 25% [twenty-five per cent] of the value of the contract to any other enterprise that does not have an equal or higher B-BBEE status level than the person concerned, unless the contract is subcontracted to an EME that has the capability and ability to execute the subcontract.
- 4.13 Bidders are to note that in terms of paragraph 2.6 of Statement 000 of the Revised Codes of Good Practice issued on 11 October 2013 in terms of Government Gazette No. 36928, any representation made by an entity about its B-BBEE compliance must be supported by suitable evidence or documentation. As such, Transnet reserves the right to request such evidence or documentation from Bidders in order to verify any B-BBEE recognition claimed.

5. B-BBEE STATUS AND SUBCONTRACTING

- 5.1 **Bidders who claim points in respect of B-BBEE Status Level of Contribution must complete the following:**

B-BBEE Status Level of Contributor _____ = _____ [maximum of 20 points]

Note: Points claimed in respect of this paragraph 5.1 must be in accordance with the table reflected in paragraph 4.1 above and must be substantiated by means of a B-BBEE certificate

"PREVIEW COPY ONLY"

issued by a Verification Agency accredited by SANAS or a Registered Auditor approved by IRBA or a sworn affidavit in the case of an EME or QSE.

5.2 Subcontracting:

Will any portion of the contract be subcontracted? YES/NO [delete which is not applicable]

If YES, indicate:

- (i) What percentage of the contract will be subcontracted? %
- (ii) The name of the subcontractor
- (iii) The B-BBEE status level of the subcontractor
- (iv) Is the subcontractor an EME? YES/NO

5.3 Declaration with regard to Company/Firm

- (i) Name of Company/Firm.....
- (ii) VAT registration number.....
- (iii) Company registration number.....
- (iv) Type of Company / Firm [TICK APPLICABLE BOX]
 - ☐ Partnership/Joint Venture/Consortium
 - ☐ One person business/sole propriety
 - ☐ Close Corporations
 - ☐ Company (Pty) Ltd
- (v) Describe Principal Business Activities
.....
.....
- (vi) Company Classification [TICK APPLICABLE BOX]
 - ☐ Manufacturer
 - ☐ Supplier
 - ☐ Professional Service Provider
 - ☐ Other Service Providers, e.g Transporter, etc
- (vii) Total number of years the company/firm has been in business.....

BID DECLARATION

I/we, the undersigned, who warrants that he/she is duly authorised to do so on behalf of the company/firm, certify that points claimed, based on the B-BBEE status level of contribution indicated in paragraph 4 above, qualifies the company/firm for the preference(s) shown and I / we acknowledge that:

- (i) The information furnished is true and correct.
- (ii) In the event of a contract being awarded as a result of points claimed as shown in paragraph 6 above, the contractor may be required to furnish documentary proof to the satisfaction of Transnet that the claims are correct.
- (iii) If the B-BBEE status level of contribution has been claimed or obtained on a fraudulent

basis or any of the conditions of contract have not been fulfilled, Transnet may, in addition to any other remedy it may have:

- (a) disqualify the person from the bidding process;
- (b) recover costs, losses or damages it has incurred or suffered as a result of that person's conduct;
- (c) cancel the contract and claim any damages which it has suffered as a result of having to make less favourable arrangements due to such cancellation;
- (d) restrict the Bidder or contractor, its shareholders and directors, and/or associated entities, or only the shareholders and directors who acted in a fraudulent manner, from obtaining business from Transnet for a period not exceeding 10 years, after the *audi alteram partem* [hear the other side] rule has been applied; and/or
- (e) forward the matter for criminal prosecution.

WITNESSES:

1.

2.

SIGNATURE OF BIDDER

DATE:

COMPANY NAME:

ADDRESS:

C1.2 Contract Data

Data provided by the *Employer*

Please read the relevant clauses in the NEC3 Engineering and Construction Short Contract (June 2005) (ECSC3)¹ before you enter data. The number of the principal clause is shown for most statements however other clauses may also use the same data.

Completion of this data in full is essential to create a complete contract.

Clause	Statement	Data
General		
10.1	The <i>Employer</i> is	Transnet SOC Ltd
	Address	Registered address: Carlton Centre 150 Commissioner Street Johannesburg
	Having elected its Contractual Address for the purposes of this contract as:	Transnet Freight Rail FC Sturrock Building Fleming Street Port Elizabeth 6001
		Postal Address: PO Box 13213 Humewood Port Elizabeth 6013
	Tel No.	041 507 2714
	Fax No.	011 774 9102
11.2(11)	The <i>works</i> are	EMERGENCY REPAIRS AND MINOR ROAD MAINTENANCE WORK (CIVIL) TO TRANSNET ASSETS IN THE PORT ELIZABETH AREA FOR A PERIOD OF ONE YEAR OR UNTIL THE TOTAL PAYMENT HAS REACHED R 500 000.00 (VAT excl.) WHICHEVER OCCURS FIRST.
11.2(13)	The Works Information is in	the document called 'Works Information' in Part 3 of this contract.
11.2(12)	The Site Information is in	the document called 'Site Information' in Part 4 of this contract.
11.2(12)	The <i>site</i> is	Port Elizabeth Surrounding Areas

¹ Available from Engineering Contract Strategies Tel 011 803 3008, Fax 011 803 3009.

30.1	The <i>starting date</i> is	TBA
11.2(2)	The <i>completion date</i> is	12 Months after the start date.
13.2	The <i>period for reply</i> is	2 weeks
14.4	The <i>Employer's representative</i> is (name)	Mr G Valentine
	Address	Broad Street Civil and Electrical Maintenance Workshop Port Elizabeth
	Tel No.	041-507-4147
	The authority of the <i>Employer's representative</i> is	Supervisor
40	The <i>defects date</i> is	26 weeks after Completion
41.3	The <i>defect correction period</i> is	2 weeks
50.1	The <i>assessment day</i> is on the	15th of each month.
50.5	The <i>delay damages</i> are	R300.00 per day
50.6	The retention is	10% on all payments certified
51.1	The <i>currency of this contract</i> is the	South African Rand
51.2	The period within which payments are made is	Payment will be effected on or before the last day of the month following the month during which a valid Tax invoice and statement were received
51.4	The interest rate on late payment is	The prime lending rate of the Standard Bank of South Africa
80.1	The <i>Contractor</i> is not liable to the <i>Employer</i> for loss of or damage to the <i>Employer's property</i> in excess of	R25 000.00 for any one event
82.1	The <i>Employer</i> provides this insurance	Transnet Principal Control Insurance
82.1	The minimum amount of cover for the third insurance stated in the Insurance Table is:	the extent as stated in the insurance policy for contract works and public liability (Principal Controlled Insurance)
82.1	The minimum amount of cover for the fourth insurance stated in the Insurance Table is:	Not Applicable
	Does the United Kingdom Housing Grants, Construction and Regeneration Act (1996) apply?	No
93.1	The <i>Adjudicator</i> is	Both parties will agree as and when a dispute arises. If the parties cannot reach an agreement on the <i>Adjudicator</i>, the chairman of the Association of Arbitrators will appoint an <i>Adjudicator</i>.
93.2(2)	The <i>Adjudicator nominating body</i> is:	

If no <i>Adjudicator nominating body</i> is entered, it is:		The Association of Arbitrators (Southern Africa)
93.4	The <i>tribunal</i> is:	Arbitration
	The <i>arbitration procedure</i> is	The Rules for the Conduct of Arbitrations of the Association of Arbitrators (Southern Africa)
	The place where arbitration is to be held is	TBA
	The person or organisation who will choose an arbitrator	The Chairman of the Association of Arbitrators (Southern Africa)
	- if the Parties cannot agree a choice or - if the arbitration procedure does not state who selects an arbitrator, is	
The conditions of contract are the NEC3 Engineering and Construction Short Contract (June 2005)² and the following additional conditions:		[Only enter details here if additional conditions are required.]
The <i>additional conditions of contract</i> are:		
<ol style="list-style-type: none"> 1. The Contractor shall not make use of any sub-Contractor to perform the works or parts thereof without prior permission from the Project Manager. 2. The Contractor shall ensure that a safety representative is at site at all times. 3. The Contractor shall comply with all applicable legislation and Transnet safety requirements adopted from time to time and instructed by the Project Manager / Supervisor. Such compliance shall be entirely at own cost, and shall be deemed to have been allowed for in the rates and prices in the contract. 4. The Contractor shall, in particular, comply with the following Acts and Transnet Specifications:- <ol style="list-style-type: none"> 1.4.1 The Compensation for Occupational Injuries and Diseases Act, No. 130 of 1993. The Contractor shall produce proof of his registration and good standing with the Compensation Commissioner in terms of the Act. 1.4.2 The Occupational Health and Safety Act (Act 85 of 1993). 1.4.3 The explosive Act No. 26 of 1956 (as amended). The Contractor shall, when applicable, furnish the Project Manager / Supervisor with copies of the permits authorising him or his employees, to establish an explosives magazine on or near the site and to undertake blasting operations in compliance with the Act. 1.4.4 The Contractor shall comply with the current Transnet Specification E.4E, Safety Arrangements and Procedural Compliance with the Occupational Health and Safety Act, Act 85 of 1993 and Regulations and shall before commencement with the execution of the contract, which shall include site establishment and delivery of plant, equipment or materials, submit to the Project Manager / Supervisor. 		

² Available from Engineering Contract Strategies Tel 011 803 3008, Fax 011 803 3009.

- 1.4.5 The Contractor shall comply with the current Specification for Works On, Over, Under or Adjacent to Railway Lines and near High Voltage Equipment – E7/1, if applicable, and shall take particular care of the safety of his employees on or in close proximity to a railway line during track occupations as well as under normal operational conditions.
5. The Contractor's Health and Safety Programme shall be subject to agreement by the Project Manager / Supervisor, who may, in consultation with the Contractor, order supplementary and/or additional safety arrangements and/or different safe working methods to ensure full compliance by the Contractor with his obligations as an employer in terms of the Act.
 6. In addition to compliance with clause 1.4 hereof, the Contractor shall report all incidents in writing to the Project Manager / Supervisor. Any incident resulting in the death of or injury to any person on the works shall be reported within 24 hours of its occurrence and any other incident shall be reported within 48 hours of its occurrence.
 7. The Contractor shall supply a **site diary** (with triplicate pages). This book shall be used to record any unusual events during the period of the work. Any delays to the work shall also be recorded such as delays caused by poor weather conditions, delays caused by permits being cancelled etc. The appointed Project Manager or Supervisor must countersign such delays. Other delays such as non-availability of equipment from 3rd party suppliers must be communicated to the Project Manager or Supervisor in writing.
 8. The Contractor shall supply a **site instruction book** (with triplicate pages). This book shall be used to record any instructions to the Contractor regarding problems encountered on site – for example the quality of work or the placement of equipment. This book shall be filled in by the Project Manager or Supervisor and must be countersigned by the Contractor.
 9. Both books mentioned in 1.7 and 1.8 shall be the property of Transnet Freight Rail and shall be handed over to the Project Manager or Supervisor on the day of energising or handing over.
 10. All processes of the manufacture and assembly of the product components must be subjected to a quality assurance system.
 11. The Contractor will assume full responsibility for assuring that the products purchased meet the requirements of Transnet Freight Rail for function, performance, and reliability, including purchased products from 3rd party suppliers/Manufacturers.
 12. The Contractor shall prove to Transnet Freight Rail that his equipment or those supplied from 3rd party suppliers/manufacturers confirms to Transnet freight rail specifications.
 13. The period within which payments are made is 30 days from date of invoice receipt



2.0 CONTRACTUAL REQUIREMENT

- 2.1 An addendum reflecting changes to the project specification and 'Price List' may be forwarded to Contractors after the site meeting and Contractors shall quote accordingly, failure of which will result in disqualification.
- 2.2 Contractors shall duly fill in the attached 'Price List'. Items not reflected in the 'Price List', but covered in the project specification or agreed at site meetings, shall be added to the 'Price List' by the Contractor and quoted for accordingly.
- 2.3 Contractors shall submit qualifications of staff that will be performing the works. Only qualified personnel shall perform the works as specified in the Works Information.
- 2.4 During the duration of the contract, the successful Contractor shall be required to inform the Supervisor of any staff changes and provide the qualifications of the replacement staff for approval.
- 2.5 Contractors shall indicate compliance with the specifications. This shall take the form of a separate document indicating the individual statement of compliance or non-compliance.
- 2.6 Contractors shall motivate a statement of non-compliance.
- 2.7 The successful Contractor shall provide a Gantt or a similar chart showing when the works will be done and energised. This chart shall be submitted to the Project Manager or Supervisor within 14 days after the award of the contract has been made to the successful Contractor.
- 2.8 Where equipment offered does not comply with standards or publications referred to in the specification, Contractors shall state which standards apply and submit a copy in English or certified translation.
- 2.9 Contractors shall submit descriptive literature consisting of detailed technical specifications, general constructional details and principal dimensions, together with clear illustrations of the equipment offered.
- 2.10 During the duration of the contract period, the successful Contractor shall be required to inform the Project Manager / Supervisor of any changes to equipment offered and submit detailed information on replacement equipment for approval prior to it being used on this contract.
- 2.11 Contractors shall submit equipment type test certificates as specified on the contract. These shall be in English or certified translation.
- 2.12 The Contractor shall be issued with a completion certificate with the list of all defects to be repaired within 14 working days after commissioning.
- 2.13 The guarantee period shall expire after a period of 12 months commencing on the date of completion and handing over of the contract to Transnet Freight Rail.



- 2.14 Any defects that may become apparent during the guarantee period shall be rectified to the satisfaction of Transnet Freight Rail, and to the account of the Contractor.
- 2.15 The Contractor shall undertake work on the rectification of any defects that may arise during the guarantee period within 7-days of him being notified by Transnet Freight Rail of such defects.
- 2.16 Should the Contractor fail to comply with the requirements stipulated above, Transnet Freight Rail shall be entitled to undertake the necessary repair work or effect replacement of defective apparatus or materials, and the Contractor shall reimburse Transnet Freight Rail the total cost of such repair or replacements, including the labour costs incurred in replacing defective material.
- 2.17 Any specific type of fault occurring three times within the guarantee period and which cannot be proven to be due to other faulty equipment not forming part of this contract shall automatically be deemed an inherent defect. Such inherent defect shall be fully rectified to the satisfaction of the Project Manager or Supervisor and at the cost of the Contractor.
- 2.18 If urgent repairs have to be carried out by Transnet Freight Rail staff to maintain supply during the guarantee period, the Contractor shall inspect such repairs to ensure that the guarantee period is not affected and should they be covered by the guarantee, reimburse Transnet Freight Rail the cost of material and labour.
- 2.19 The Contractor shall guarantee the satisfactory operation of the complete works supplied and erected by him and accept liability for maker's defects that may appear in design, materials and workmanship.



Data provided by the Contractor (the Contractor's Offer)

The tendering contractor is advised to read both the NEC3 Engineering and Construction Short Contract (June 2005) and the relevant parts of its Guidance Notes (ECSC3-GN)³ in order to understand the implications of this Data which the tenderer is required to complete. An example of the completed Data is provided on page 26 of the ECSC3 Guidance Notes.

Completion of the data in full is essential to create a complete contract.

10.1 The Contractor is (Name)

Address

.....

.....

Tel No.

Fax No.

E-mail address

63.2 The percentage for overheads and profit added to the Defined Cost for people is%

63.2 The percentage for overheads and profit added to other Defined Cost is%

11.2(9) The Price List is in **the document called 'Price List' in Part 2 of this contract.**

11.2(10) The offered total of the Prices is [Enter the total of the Prices from the Price List]: R..... excluding VAT

[in words]

.....
excluding VAT

Signed on behalf of the Contractor

Name

Position

Signature Date

Employer's Acceptance

The Employer accepts the Contractor's Offer to Provide the Works

Signed on behalf of the Employer

Name

Position

Signature Date

C2 Pricing Data

C2.1 Pricing Instructions

1. The Tenderer is deemed to have satisfied himself before tendering as to the correctness and sufficiency of his tender for the works and of the rates and prices stated in the priced Price List in the works Information. The rates and prices (except in so far as otherwise provided in the Tender) collectively cover full payment for the discharge of all his obligations under the Contract and all matters and things necessary for the proper completion of the works.
2. Any additional costs foreseen by the Tenderer for items not included in the Price List shall be included in the List to be submitted, under the item 'P's & G's'. These items must be specified.
3. It will be assumed that prices included in the Price List are based on Acts, Ordinances, Regulations, By-laws, International Standards and National Standards that were published 28 days before the closing date for tenders.
4. Reference to any particular trademark, name, patent, design, type, specific origin or producer is purely to establish a standard for requirements. Products or articles of an equivalent standard may be substituted but will be subject to approval by the Employer.
5. The amount of the Preliminaries to be included in each monthly payment certificate shall be assessed as an amount prorated to the value of the work duly executed in the same ratio as the preliminaries bears to the total of prices excluding any contingency sum, the amount of the Preliminaries and any amount in respect of contract price adjustment provided for in the contract.
6. The following abbreviations are used in the Price List:
ea = Each
7. The prices and rates in this Price List are fully inclusive prices for the work described under the items. Such prices and rates cover all costs and expenses that may be required in and for the execution of the work described in accordance with the provisions of the scope of work and shall cover liabilities and obligations set forth or implied in the Contract data, as well as profit.
8. Where the Works Information requires detailed drawings and designs or other information to be provided, all costs associated therewith are deemed to have been provided for and included in the unit rates and sum amount tendered for such items.
9. Where no quantity has been provided against an item in the Price List, the Contractor shall use their discretion and provide the quantity.
10. The short descriptions of the items of payment given in this Price List are only for purposes of identifying the items. More details regarding the extent of the work entailed under each item appear in the Works Information.
11. For each item in the Price List, including Preliminaries, the Contractor shall provide in the appropriate column the portion of the tendered sum (inclusive of labour and material).
12. The total in the Price List shall be exclusive of VAT, and shall be transferred to Contractor's Offer.
13. Additional work not covered in the Price List shall be listed and quoted for by the tenderers in a separate sheet.
14. Payment Certificates - On or after the assessment date, the Supervisor and the Contractor will together assess the quantities of the progress on each item in the Price List and complete the Progress Assessment Detail form, where after the Progress Assessment Certificate will be issued.
15. The Contractor shall then submit a VAT invoice and attach the Progress Certificate mentioned in clause 14 of this section for payment by the Employer.
16. Contractor shall provide the Employer with the necessary details and documentation as required in order to enable the Employer to make electronic payments.

C2.2 Price List

PART B

SCHEDULE OF RATES AND QUANTITIES

THIS (SCHEDULE OF RATES AND PRICES) MUST BE FILLED IN BLACK INK AND ADDED TO THE TOTAL CONTRACT PRICE.

Name of Company : _____

SCHEDULE OF RATES

Road repair work will be carried out at the following Daly rates (Excl. VAT) :

	<u>Water truck + Operator</u>	<u>Grader + Operator</u>
Standard Rate:	R_____/Day	R_____/Day
Overtime Rate:	R_____/Day	R_____/Day
Saturday:	R_____/Day	R_____/Day
Sunday:& PPH	R_____/Day	R_____/Day

	<u>10 Ton Roller + Operator</u>	<u>Labourer</u>
Standard Rate:	R_____/Day	R_____/Day
Overtime Rate:	R_____/Day	R_____/Day
Saturday:	R_____/Da	R_____/Day
Sunday:& PPH	R_____/Day	R_____/Day

Percentage Handling Fee for Material Purchases and hire of equipment. _____%
Handling Fee.

TENDERER: [name] _____

TENDERER: [Signature] _____

DATE : _____



C3: Scope of Work

C3.1 Works Information

GENERAL CONDITIONS

1. **Scope of work**

As per Works Information.

2. **Site location**

The site is situated at per Site Information.

3. **Time to complete the work**

The tenderer shall indicate at section 2 the time he will require to complete the work, however, this time should not exceed time as per specification. This period shall be exclusive of weekends, public holidays and statutory holiday periods.

Failing completion of the work within the period as stipulated above or with any shorter period offered by the contenders and accepted by Transnet, the contractor shall pay to Transnet the sum of as per specification for every day or part thereof during which the works remain incomplete.

4. **Guarantee**

All workmanship and material shall be guaranteed for a period as indicated in specification of completion of work.

5. **Inspection of works**

No work shall be covered up or put out of view without the approval of the Project Manager.

The Contractor shall afford full opportunity for the Project Manager to examine and measure any work, which is about to be covered up or put out of view and to examine foundations before permanent work is placed thereon.

5.1. The Contractor shall give due notice to the Project Manager whenever any such work of formations is or are ready or about to be ready for examination.

5.2. The Project Manager shall, without unreasonable delay, unless he considers it necessary and advises the Contractor accordingly, examine and or measuring such work as required.

5.3. The Contractor shall uncover any part or parts of the work or make openings in or through the same as the Project Manager may from time to time direct and shall reinstate and make good such part or parts to the satisfaction of the Project Manager and are found to be executed in accordance with the Contract, the expenses of uncovering, making openings in or through, reinstating and making good the same shall be done by the Contractor.

6. **Site records**

6.1 **Site Instruction Book**

6.1.1. The Contractor shall provide a **site instruction book (not smaller than A5), in triplicate for the Project Manager to place all instructions** that are needed to compliment the specifications and drawings and any other instruction that may affect the cost of the work.

No work will be recognized for additional payment unless it has been recorded and signed by the Project Manager in the aforesaid book.

6.2. **Site Diary**

6.2.1. The contractor shall provide a diary, in triplicate to record all day to day incidents that could occur during the contract period. This includes weather, names & numbers of workers on site, material that has been delivered, material that has been loaded and disposed of, incidents that have occurred, nature of work to be done on that day, etc.

6.3. Programming & Planning of the work

6.3.1. The contractor shall provide to the Project Manager a detail plan of how he intends to do the work and this plan must be to the requirements of the operation of Transnet Freight Rail workshop with minor disruptions as no delays must be allowed in this regard.

6.3.2. The program must be agreed to (in the site instruction book) before any work will be allowed to commence on the workshops, per se. The programme can be in a form of a pert (bar) chart and will be used as a guide to measure progress of the work.

7. Water supply.

Water may be made available for the purpose of construction of the works only. The water shall be used conservatively and if not, this privilege shall be removed and the water shall be metered, and the cost of the metered water shall be borne by the Contractor as well as all charges as entertained by Transnet Freight Rail. The Contractor must supply all drums, connections, hoses, clamps etc., as necessary and to provide water to the working site.

8. Electricity supply.

Electricity may be made available to the Contractor. The contractor must adhere to the safety standards as per the General Safety Regulations, Electrical Machine Regulations, Electrical Installation and the Regulations of the **Health and Safety Act**, (Act 85 of 1993) and SANS 10142. The Contractor must supply all leads and plugs as necessary and to provide power to the working site

9. Access to site

The areas are restricted and the contractor must ensure he complies with the regulations of Transnet Freight Rail in every way. The Contractor and/or any sub-contractors shall be required to apply for permission to enter the restricted area in writing. A list of workmen shall be given to the Project Manager to arrange for the necessary permits. 48 Hours minimum notice is necessary for the processing these permits. This includes changes to staff during the contract period.

10. Materials found on site

No material that is lying on the site (other than that as specified in this document) or any Transnet Freight Rail's properties may be removed or used (even if deemed as scrap) by the contractor.

11. Clearing of site

The Contractor shall provide for cleaning up and sorting all rubbish and debris of whatever kind, generated by this work only, throughout the duration of the contract. Upon completion the Contractor shall clear away and remove all rubbish, unused material, plant and debris caused by the works and leaves the site and the whole of the works clean and tidy to the satisfaction of the Project Manager.

12. Working outside normal working hours

The normal working hours are between 07:30 and 16:00 Mondays to Fridays. If it is required to work outside the stated normal working hours the Contractor must obtain written permission at least 24 hours before such work needs to be undertaken. Transnet Freight Rail will not unreasonably withhold permission; however the Contractor may have to pay for Transnet Freight Rail's supervisory personnel.

13. Escalation

This contract does not make provision for compensation in respect of increased costs. The contenders must allow in his fixed price for any increased costs, which he may encounter during the contract period or such extended period as agreed upon by both parties.

14. Retention

Transnet Freight Rail reserves the right to retain up to ten (10) percent of the value of the contract, for a period of six months, (the maintenance period) or such further period beyond the maintenance period if defects have not yet been made good to the satisfaction of the Project Manager.

15. Safety Precautions and Insurance

15.1 Act 85:

The contractor shall comply with the Occupational Health & Safety Act, 1993 (Act 85 of 1993). The form E.4E as placed in this Specification must be adhered to. (Available **on request**) But will be completed by the successful tenderer.

15.2 E7/1

Specification for works on, over, under adjacent to Railway lines and near high voltage equipment. (Available at the tender briefing)

15.3 Environment

15.3.1 The Contractor shall, at all times, comply with the statutes that prohibit pollution of any kind. These statutes are enacted in the following legislation.

- ☐ The National Environmental Management Act, 107/1998;
- ☐ The Environmental Conservation Act, 73/1989; and
- ☐ The National Water Act, 36/1998.

15.3.2 The Contractor shall appoint a responsible person to ensure that no incident shall occur on site that could cause pollution. Where the Contractor was negligent and caused any form of pollution the damage shall be rectified at the Contractors cost.

15.4 SUBSTANCE ABUSE TESTING

The OHSA (Act 85 of 1993) clearly states in the Safety Regulations 2A "INTOXICATION" **An employer or user, as the case may be, shall not permit any person who appears to be under the influence of intoxicating liquor or drugs, to enter or remain at a workplace.** Transnet Freight Rail enforces this legislation by means of its Substance Abuse Policy, and therefore reserves the right to do substance abuse testing on anyone who enters their premises.

15.5 Health and Safety Requirements.

As per the E4E (Health and Safety requirements) no work can commence before the certificate of Good Standing by the Compensation Commissioner, or proof of payment, has been delivered to this office, for this project.

16. Note:

16.1 For further descriptions of materials to be used and methods to be adopted, the Contractor is referred to the various Codes and Standards, where relevant, and this shall be deemed too from part of the descriptions of any items in the following Specification. Except where any specification provision in a description in this specification is at variance with the above, in which case the specific provision is this Specification description shall apply.

- 16.2** Where trade names and catalogue references have been used in these Specifications to specify a product, Tenderers must tender on that particular or similar product. In addition, Tenderers must tender on the design specified. The accepted tenderer (i.e. Contractor) may, after obtaining written authority from the Project Manager, use an alternative product or design.
- 16.3** Where such written authority is given by the Project Manager at the request of the Contractor, for the contractor's convenience, all additional costs involved will be done for the Contractor's account. In the event of a less expensive product or design being used, a variation order reflecting the saving in cost will be issued.

17. GENERAL

17.1 Standard Specification

In so far as they can be applied and where they are not inconsistent with the terms of this specification, the following specifications shall be regarded as being embodied in this specification.

17.2 SANS Specifications (To be obtained by the contenders)

National Building Regulations	SANS 10400 – 11990
General Structural	SANS 11200AH- 11982
Electrical Code of Practice	SANS 10142

17.3 To be supplied by the Contractor

The Contractor shall provide all labour, transport, consumable stores, plant, equipment, tools, services, materials and ingredients of every description required for the carrying out and completion of the WORKS as per this specification and as may be ordered by the Manager.

17.4 Site meetings

The Contractor shall be called upon to attend meetings on the site to discuss the progress of WORKS with the Transnet Freight Rail representatives.

17.5 Setting out of the works

The setting out of the work shall be the sole responsibility of the Contractor and shall be done in accordance with this Specification, the drawings and the design.

17.6 Keep site tidy

The Contractor shall keep the site tidy at all times and remove all old material and such as rubble, off-cuts, demolished material, surplus material and carry away and dump or store onto or at an approved site. A permit must be obtained from the Municipalities to transport material on their roads, when required.

17.7 Preliminary and General (P & G)

The P & G shall be as per the General and Special Conditions and will include all costs not directly related to the execution of the work as stated. All items not specifically mentioned in the Schedule of Rates and Prices should form part of the contractor's requirements such as the cost of stationary and so on.

17.7.1 The P & G is made up of:

17.7.1.1 Fixed Charges (start-up costs and removal of site establishment) and will include the handing over of the site to the contractor and handing back of the site after completion.

17.7.1.2 Time Related items and this shall allow for and must be built in the fixed charge rate as in the above, for the full duration of the contract. Any additional time that may or may not be allowed for if the contract exceeds the completion date as agreed will be included in this price/rate.

17.7.2 The profit required to do the work shall be to the contractor's discretion and must be allowed for in all the items in the Schedule of Rates and Prices.

18. ACT 85:

18.1 The contractor shall allow in his pricing for all material and supervision needed in their costing. This shall include:

18.1.1 Start-up costs:

18.1.1.1 First aid kit and emergency numbers displayed.

18.1.1.2 Safety clothing (boots, gloves, safety hats, goggles and so on)

18.1.1.3 Barriers, barrier tape and so on.

18.1.1.4 Safety files with records of all reports and safety inspections.

18.1.1.5 Sign / notice board stating contractors name and that all visitors report to the site agent for induction to enter onto site and sign the site book.

18.1.2 Day to day matters:

18.1.2.1 The maintenance of the above start up costs.

18.1.2.2 The cost of safety procedures, need at all times at least one incumbent to be responsible for safety. On a daily basis and before any procedure is started a safety and work activity must be recorded in the site diary/safety file to ensure safety methods are used.

18.1.2.3 Need an incumbent with basic first aid training.

18.2 The contractor shall use the **Construction Work Check List** to ensure that all safety issues are dealt with and this must be kept on the safety file.



C3: Scope of Work

PART B

1. Scope of work

- 1.1 This contract comprises the performance of road repair work: general emergency repair work, minor road repairs and maintenance work to Transnet Freight Rail roads, in the Port Elizabeth area and within a 40 km radius of the North End Depot.
- 1.2 The contract will be valid for a period of 12 months or until the total payment has reached an amount of R500 000 (excluding VAT), whichever occurs first.
- 1.3 The Contractor shall perform repair work in accordance with this specification on an "As and When" required basis.

2. Specifications

The contractor shall ensure that all specifications are adhered to in so far as they can be applied and where they are not inconsistent with the terms of this specification. The following specifications shall be regarded as being embodied in this specification

2.1 SABS Specifications (To be obtained by the contenders)

Roads	SABS 1200M-1981
Sub-Base	SABS 1200ME-1981
Base	SABS 1200MF-1981
Asphalt Base and Surfacing	SABS 1200MH-1981

- 2.2 Guidelines for the provision of Engineering Services in Residential Townships - by Department of Community Development.

3. To be supplied and provided by the Contractor

- 3.1 The Contractor shall provide all labour, transport, consumables, stores, plant, equipment, tools, services, materials and ingredients of every description required for the carrying out and completion of the WORKS as per this specification and as may be ordered by the Project Manager.
- 3.2 The Contractor shall provide sufficient communication facilities including a fax machine in order that he may be reached at any time and place during the duration of the contract.
- 3.3 The Contractor must be available on a twenty-four hour basis and be able to respond to any emergency request within two hours after he is notified thereof.
- 3.4 Satisfactory proof of his or his staff's qualifications for the task required before Transnet will permit him/her to commence this task duty. Acceptable proof of qualifications shall be:
 - 3.4.1 Operator Certificate and Drivers Licenses
 - 3.4.2 Or any competency as need and recognized by the Department of Labour.

"PREVIEW COPY ONLY"

- 3.5 Proof that he is able to perform general road repair work and that the workmanship will be of an acceptable quality and standard.
- 3.6 If the workmanship is not of standard albeit that the incumbent who undertakes the work is qualified as per clause 3.4, Transnet Freight Rail will reserves the right to ask that this incumbent be removed for doing work for Transnet Freight Rail.
- 3.7 The successful tenderer shall give a list of his employees details who shall perform the road repairs to Transnet Freight Rail.

3.8 **Sub-contractor**

The Contractor shall not assign his obligations under the contract, nor sublet the contract work or any part thereof without the consent of the Manager. Breach of this condition will entitle Transnet to cancel the contract forthwith.

4. **EARTHWORKS**

4.1 **Disposal of soil**

All excavated material and other surplus material or backfill shall be carted and disposed of by the contractor to an approved dump site.

4.2 **Excavation generally**

The excavation to the base of the lowest layer of imported material shall be done to the cross slopes, net width, etcetera, all as indicated in the site instruction book or drawing (where given). Trench excavation to be in accordance with SANS 1200 - risk of collapse, dealing with ground water, seepage and keeping the excavation free from water, backfilling, working space

4.3 **Pipes, services, cables and fittings**

The Contractor shall verify the location of underground services on site. The contractor shall take special precautions not to damage any water pipes, cables, sewer mains, services or fittings. If any of the aforementioned is damaged, it shall be for the contractors account.

4.4 **Compaction of the insitu**

The contractor shall water and compact the upper 150mm of the insitu material, before placement of any material in the next layer. The insitu material shall have at least 93 % Mod AASHTO density

5. **Site meetings**

The Contractor shall be called upon to attend meetings on the site to discuss the progress of work with the Project Manager when required.

6. **Recording of the works:**

The Contractor shall keep and maintain accurate records in the site diary of all work so that any disputes can be resolved and that the extent of the required tests on the materials can readily be determined.

7. **Setting out of the works:**

The setting out of the work shall be the sole responsibility of the Contractor and shall be done in accordance with the "Guidelines for the provision of Engineering Services in Residential Townships" by The Department of Community Development.
All dimensions and quantities to be checked on site by tenderer before commencing with the work.

8. **Keep site tidy:**

The Contractor shall keep the site tidy at all times and remove all old material and such as rubble, off-cuts, demolished material, surplus material and carry away and dump or store onto or at an approved site.
If required, a permit must be obtained from the local Municipality to transport material on their roads.

9. **Payments : Claims:**

All instructions to the Contractor shall be confirmed in writing and only requests that were issued / in writing, will be accepted for payment.
The contractor shall be paid as per the tender rates and prices.

Labour : The contractor will be paid for the actual hours worked by the number of staff used, as recorded in the daily site diary.

The profit required to do the work shall be to the contractor's consideration and must be allowed for in the entire Schedule of Rates and Prices.

The cost of consumables, tools and small plant must be included in the labour rates

Material & equipment used to complete the work will be paid for as per invoice from the supplier plus the percentage handling fee as tendered.

The Suppliers Invoice MUST be submitted with each and every claim

With each and every claim the "**Claim form**" (See Part C) must be completed and submitted together with the Contractor's invoice.

10. **Penalties for Delays :**

The contractor shall be required to complete each part of the work as stated in the Site instruction Book within a period as agreed to by Transnet Freight Rail's representative.

Notwithstanding that above emergency work shall be reacted upon immediately and the situation made safe and if a burst pipe, the water shutdown to prevent waste.

Furthermore, that repair work shall be then repaired as soon as practically possible.

Failing completion of the work within the period as stipulated above, the contractor shall pay to Transnet Freight Rail as penalty, the sum of R300.00 (Three Hundred Rand) for every day or part thereof during which the works remain incomplete.

11. **Guarantee : Quality**

Guarantee the quality of his workmanship for a period of twelve (12) months.

In the event of Transnet in its sole discretion, being dissatisfied for whatever reason with any or all of the work performed by the Contractor, Transnet shall forthwith notify the Contractor thereof. The Contractor shall then forthwith redo the complete work at his own expense to the satisfaction of Transnet.

12. Traveling:

No traveling time is allowed for within the radius of 40km from the station. Therefore, the price is inclusive of traveling in this zone.

If work is outside this zoning then the contractor shall be compensated for this via a rate. This shall be from the 40km radius to the requested work. This price is inclusive of return trip.

NOTE: rate is only for one way. The return trip is not allowed for and must be included in the rate.

13. Materials:

All material to be SANS approved. Adhere to manufacturer's specifications and instructions.

14. Safety :

Contractor to adhere to all safety regulations as per Occupational Health and Safety Regulations Act, 85 of 1993.

Adhere to the safety rules and regulations of the various Depots and sites.

At all times the safety aspect of the project must be treated as very important.

All contract workers will attend a safety induction course presented by Transnet Freight Rail before the work commences.

15. Occupancy :

Some sites may be occupied during repairs. The contractor, in conjunction with the Project Manager, must liaise with the people on site as to how and when the work can be performed so as to ensure their safety and no major disruptions to the service of TFR.

16. Risks Assessed

- 16.1 Working among moving equipment / vehicles.
- 16.2 Working with hot asphalt
- 16.3 Working with flammable liquid
- 16.4 Working near Live Overhead electric wires
- 16.5 Working near / on / below live railway lines

17. Access to work sites and Security

Some of the areas are restricted and the contractor must ensure he complies with the security regulations of Transnet Freight Rail in every way. The Contractor and/or any sub-contractors shall be required to apply for permission to enter the restricted area in writing. A list of workmen shall be given to the manager to arrange for the necessary permits. A 48 hours minimum notice is necessary for the processing of these permits. This includes changes to staff during the contract period.

Site access permits will be issued to the contractor and must be displayed to any person on request. put into place at the various sites

18. Environment

The Contractor shall, at all times, comply with the statutes that prohibit pollution of any kind. These statutes are enacted in the following legislation.

- 18.1 The National Environmental Management Act, 107/1998;
- 18.2 The Environmental Conservation Act, 73/1989; and
- 18.3 The National Water Act, 36/1998.



The Contractor shall appoint a responsible person to ensure that no incident shall occur on site that could cause pollution. Where the Contractor was negligent and caused any form of pollution, the damage shall be rectified at the Contractor's cost.

19. SUBSTANCE ABUSE TESTING

The OHSA (Act 85 of 1993) clearly states in the Safety Regulations 2A "INTOXICATION" **An employer or user, as the case may be, shall not permit any person who appears to be under the influence of intoxicating liquor or drugs, to enter or remain at a workplace.** Transnet Freight Rail enforces this legislation by means of its Substance Abuse Policy, and therefore reserves the right to do substance abuse testing on anyone who enters their premises.

20. ASPHALT SURFACE REPAIRS

All repair work to be carried out strictly in accordance with SABS 1200 MH-1981: Asphalt Base and Surfacing. Potholes to be cut square, damaged tar surfaces must be removed, base course to be well compacted to AASTO density of 98% and primed prior to fill in hot mix asphalt. When asphalt is repaired the complete new area, plus a 1m wide strip around the perimeter of new repaired area must be slurry sealed.

21. GRAVEL SERVICE ROADS

Wet well and grade road surface, fill in potholes where necessary using G5 material and compact. Roll road surface by means of a 10 ton roller.

Part C :- CLAIM FORM

REQUEST : _____

CONTRACTOR, TRADING AS : _____

TELEPHONE _____ FAX _____

CONTACT PERSON _____ CELL _____

REPORTED DATE _____ TIME _____ Fax or Site Instruction Book _____

DATE STARTED WORK _____ TIME _____

DATE COMPLETED WORK _____ TIME _____

COSTS:

	R	C	Materials
_____	_____	_____	_____
_____	_____	_____	_____
_____	_____	_____	_____
Plant/equipment	_____	_____	_____
_____	_____	_____	_____
Labour	_____	_____	_____
_____	_____	_____	_____
_____	_____	_____	_____
_____	_____	_____	_____
_____	_____	_____	_____

For use by Spoornet's Representative:

Approved _____ Adjustments if any _____

GL _____ CoCe _____ Asset _____

Purchase Order Number _____

"PREVIEW COPY ONLY"

C4: Site Information

The works shall be performed at:

Port Elizabeth surrounding areas.

"PREVIEW COPY ONLY"

**PART C1.4:
ADJUDICATOR'S CONTRACT DATA**

CONTRACT DATA

- Statements given in all contracts**
- The *contract between the Parties* is **To be advised**.....
 - The *period of retention* is ...**N/A**..... weeks.
 - The *law of the contract* is the law of **the Republic of South Africa**
 - The *language of this contract* is **English**.....
 - The amount of the advanced payment is **N/A**.....
 - The Adjudicator's *fee* is...**To be advised**.....per hour.
 - The *interest rate* is **2%** per annum above the prime lending rate of the **Standard Bank of South Africa Ltd.**
 - The *currency of this contract* is **ZAR**.....
 - The Adjudicator's appointment terminates on **(To be advised)**.....

Optional statements **If the period for payment of invoices is not three weeks**

- The period for payment of invoices is **four**.....weeks.

If additional conditions of contract are required

- The *additional conditions of contract* are

To be advised

.....

.....

.....

TRANSNET



(REGISTRATION NO.1990/000900/30)

**TRADING AS
TRANSNET FREIGHT RAIL**

**ADDENDUM NO. 1
TO THE
SECONDARY AND GENERAL SPECIFICATIONS
OF THE CONTRACT**

- 1) Where ever the word "Spoornet" appears in these specifications, please replace it with "Transnet Freight Rail".
- 2) Wherever reference is made to the E5(M.W.)(1996), the E5(Nov.1996) or E160 General Conditions of Contract, please refer to the Conditions of Contract of the ECC3 Contract.
- 3) Where ever the words "Technical Officer" appear in these specifications, please replace with "Supervisor".

TRANSNET



TRANSNET



(REGISTRATION NO.1990/000900/30)

**TRADING AS
TRANSNET FREIGHT RAIL**

MINIMUM COMMUNAL HEALTH REQUIREMENTS IN AREAS OUTSIDE THE JURISDICTION OF A LOCAL AUTHORITY: TEMPORARY FACILITIES FOR CONTRACTOR'S PERSONNEL

1. CAMPS

- 1.1 Prior to the erection of any camp, the Contractor shall submit to the Technical Officer, for his approval, details of his proposals as to the site, water supply, sanitation, and size and type of buildings. Where the site is on private land, the Contractor shall submit the written approval for the use of the site of the relevant statutory authority and of the owner and occupier of the land (as applicable).
- 1.2 Camps must not be erected on land infested with field rodents.
- 1.3 Adequate drainage shall be provided to carry off storm and waste water.
- 1.4 Buildings shall be built to a neat and orderly pattern.
- 1.5 All buildings shall have smooth, hard, impervious floors, graded to provide effective drainage and to permit washing.
- 1.6 Camps shall be maintained by the Contractor at his own expense in a clean and tidy condition. The Contractor shall take such steps as the Technical Officer and landowner/occupier may demand to prevent the creation of a nuisance.
- 1.7 When so instructed by the Technical Officer, the Contractor shall, at his own expense, erect suitable screens between the camp and any public road, thoroughfare or railway line.
- 1.8 After removal of a camp, the Contractor shall, at his own expense, restore the site to its original condition to the satisfaction of the Technical Officer and of the landowner and occupier where the site is on private land.

TRANSNET



2. **HOUSING**

- 2.1 Every living room shall have cross ventilation, both constant and occasional. Where only one window is provided, it shall not be in the same wall as the door.
- 2.2 Dimensions of living rooms shall be sufficient to allow 3.5 square metres of floor area and 11 cubic metres of air space for each person over the age of 10 years. The floor area of any living room shall not be less than 7,8 square metres.
- 2.3 Flat-roofed quarters shall have a minimum roof height of 3 metres above floor level. For quarters with pitched roofs, the wall height shall be not less than 2,6 metres above the floor with a minimum height above floor of 3 metres at the top of the pitch.
- 2.4 Doors shall not be less than 2m x 0,75m and must be halved.
- 2.5 Windows of each living room shall have an area not less than one twelfth of the floor area and shall be capable of opening to at least half their full area.
- 2.6 In areas where malaria is prevalent, doors and windows must be fitted with gauze screens.
- 2.7 Cooking shelters shall comprise roofed structures, three sides of which shall be enclosed by a weatherproof material, approved by the Technical Officer to a height of at least 1m above ground level.
- 2.7.1 Sleeping quarters shall not accommodate more than 8 persons per room.
- 2.7.2 Pegboards shall be carried on metal or concrete supports and shall be separated by partitions not less than 0,4 metres high extending to within 150mm of the end of the bunk. Pegboards shall be removable for cleaning.

3. **WATER SUPPLY AND ABLUTION FACILITIES**

- 3.1 The Contractor shall ensure that an adequate and conveniently situated supply of potable water is provided.
- 3.2 Separate buildings for ablution facilities shall be provided. Where approval has been obtained for the housing of both males and females, separate facilities for each sex shall be provided. The proportion shall be 1 cubicle for 20 persons.
- 3.3 Waste water shall be hygienically disposed of.

4. **SANITATION**

- 4.1 Separate buildings for latrine facilities shall be provided. Where housing are provided for both males and females, separate facilities for each sex shall be provided. The proportions shall be at least one squatting seat for every 15 persons or less in the case of pit latrines, or one for every 10 persons or less in case of pail latrines.

SPECIFICATION E4.B
(November 1996)

Latrines shall be fly proof and sited at least 10 metres from any other building, and shall not face on any public road, thoroughfare, railway line or residential property. Pits shall not be less than 2,5 metres deep and sited not less than 120 metres from nearest underground water source.

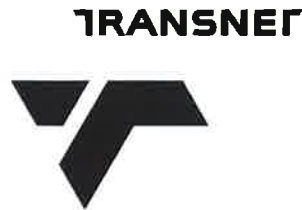
- 4.2 Latrines shall be so constructed, situated and maintained, and night soil so disposed of as to prevent access by animals, breeding of flies, pollution of streams and domestic water supplies, and other nuisances. Where a night soil removal service is operated by a competent authority, use of such service shall be obligatory, and the use of pit latrines and atria pits will not be permitted.
- 4.3 At least one refuse bin of adequate size with close fitting lid shall be provided for each building. Refuse bins shall be emptied and cleaned out daily.
- 4.4 Labour shall be employed on camp sanitation duties on the following basis:-
 - 4.4.1 Where the number of persons living at the camp is 20 or less - one unit.
 - 4.4.2 For additional numbers over 20 living at the camp - one unit per 100 or part thereof.
- 4.5 Unless refuse is removed by a competent authority, it shall be disposed of in pits and covered over daily with a layer of earth or ash of sufficient thickness to prevent depredations by rodents and the breeding of flies.
- 4.6 Adequate measures shall be taken against all vermin and insects responsible for the spread of disease. Any instructions of a competent health authority shall be carried out promptly and implicitly.
- 4.7 Buildings and bed boards shall be treated whenever necessary with an approved insecticide.
- 4.8 The Contractor shall permit and facilitate inspection of the camp and structures on the site by the staff of Transnet or any other competent authority, and shall comply with any reasonable request by such staff or any other competent authority to eliminate any unsanitary condition.
- 4.9 Any outbreak of infectious disease shall immediately be reported telephonically and confirmed in writing to the Technical Officer.
- 4.10 The keeping of animals of any sort is not permitted.
- 4.11 The Contractor shall have on hand at the camp the necessary tools, disinfectants and cleaning materials to maintain and clean the sanitary facilities.

5. **RATIONS**

Rations, where supplied by the Contractor, shall be stored in a suitable and rodent proof building with sufficient shelving.

ooOoo

"PREVIEW COPY ONLY"



TRANSNET SOC LTD
(Registration no. 1990/000900/30)

**SAFETY ARRANGEMENTS AND PROCEDURAL COMPLIANCE
WITH THE OCCUPATIONAL HEALTH AND SAFETY ACT
(ACT 85 OF 1993) AND APPLICABLE REGULATIONS**

1. General

- 1.1 The Contractor and Transnet SOC Ltd (hereinafter referred to as "Transnet") are individual employers, each in its own right, with their respective duties and obligations set out in the Occupational Health and Safety Act, Act 85 of 1993 (the Act) and applicable Regulations.
- 1.2 The Contractor accepts, in terms of the General Conditions of Contract and in terms of the Act, his obligations as an employer in respect of all persons in his employ, other persons on the premises or the Site or place of work or on the work to be executed by him, and under his control. He shall, before commencement with the execution of the contract work, comply with the provisions set out in the Act, and shall implement and maintain a Health and Safety Plan as described in the Construction Regulations, 2003 and as approved by Transnet, on the Site and place of work for the duration of the Contract.
- 1.3 The Contractor accepts his obligation to complying fully with the Act and applicable Regulations notwithstanding the omission of some of the provisions of the Act and the Regulations from this document.
- 1.4 Transnet accepts, in terms of the Act, its obligations as an employer of its own employees working on or associated with the site or place of work, and the Contractor and Project Manager or his deputy shall at all times, co-operate in respect of the health and safety management of the site, and shall agree on the practical arrangements and procedures to be implemented and maintained during execution of the Works.
- 1.5 In the event of any discrepancies between any legislation and this specification, the applicable legislation will take precedence.

2. Definitions

- 2.1 In this Specification any word or expression to which a meaning has been assigned in the Construction Regulations, shall have the meaning so assigned to it, unless the context otherwise indicates: -

- 2.2 The work included in this Contract shall for the purposes of compliance with the Act be deemed to be "**Construction Work**", which, in terms of the Construction Regulations, 2003 means any work in connection with: -
- (a) the erection, maintenance, alteration, renovation, repair, demolition or dismantling of or addition to a building or any similar structure;
 - (b) the installation, erection, dismantling or maintenance of fixed plant where such work includes the risk of a person falling;
 - (c) the construction, maintenance, demolition or dismantling of any bridge, dam, canal, road, railway, runway, sewer or water reticulation system or any similar civil engineering structure; or
 - (d) the moving of earth, clearing of land, the making of an excavation, piling, or any similar type of work;
- 2.3 "**competent person**" in relation to construction work, means any person having the knowledge, training and experience specific to the work or task being performed: Provided that where appropriate qualifications and training are registered as per the South African Qualifications Authority Act, 1995 these qualifications and training shall be deemed to be the required qualifications and training;
- 2.4 "**contractor**" means principal contractor and "subcontractor" means contractor as defined by the Construction Regulations, 2003.
- 2.5 "**fall protection plan**" means a documented plan, of all risks relating to working from an elevated position, considering the nature of work undertaken, and setting out the procedures and methods applied to eliminate the risk;
- 2.6 "**health and safety file**" means a file, or other record in permanent form, containing the information required to be kept on site in accordance with the Act and applicable Regulations;
- 2.7 "**Health and Safety Plan**" means a documented plan which addresses the hazards identified and include safe work procedures to mitigate, reduce or control the hazards identified;
- 2.8 "**Risk Assessment**" means a programme to determine any risk associated with any hazard at a construction site, in order to identify the steps needed to be taken to remove, reduce or control such hazard;
- 2.9 "**the Act**" means the Occupational Health and Safety Act No. 85 of 1993.

3. Procedural Compliance

- 3.1 The Contractor who intends to carry out any construction work shall, before carrying out such work, notify the Provincial Director in writing if the construction work:-
- (a) includes the demolition of a structure exceeding a height of 3 metres; or

(b) includes the use of explosives to perform construction work; or

(c) includes the dismantling of fixed plant at a height greater than 3m,

and shall also notify the Provincial Director in writing when the construction work exceeds 30 days or will involve more than 300 person days of construction work and if the construction work:-

(a) includes excavation work deeper than 1m; or

(b) includes working at a height greater than 3 metres above ground or a landing.

3.2 The notification to the Provincial Director shall be on a form similar to Annexure A of the Construction Regulations, 2003, also shown in Annexure 1 of this Specification. The Contractor shall ensure that a copy of the completed notification form is kept on site for inspection by an inspector, Project Manager or employee.

3.3 The Contractor shall, in accordance with the Act and applicable Regulations, make all the necessary appointments of competent persons in writing on a form similar to Annexure 2 of this Specification and deliver copies thereof to the Project Manager. Copies should also be retained on the health and safety file.

3.4 Subcontractors shall also make the above written appointments and the Contractor shall deliver copies thereof to the Project Manager.

3.5 In the case of a self-employed Contractor or any subcontractor who has the appropriate competencies and supervises the work himself, the appointment of a construction supervisor in terms of regulation 6.1 of the Construction Regulations, 2003 will not be necessary. The Contractor shall in such a case execute and sign a declaration, as in Annexure 3, by which he personally undertakes the duties and obligations of the "Chief Executive Officer" in terms of section 16(1) of the Act.

3.6 The Contractor shall, before commencing any work, obtain from the Project Manager an access certificate as in Annexure 4 executed and signed by him, permitting and limiting access to the designated site or place of work by the Contractor and any subcontractors under his control.

3.7 Procedural compliance with Act and Regulations, as above, shall also apply to any subcontractors as employers in their own right. The Contractor shall furnish the Project Manager with full particulars of such subcontractors and shall ensure that they comply with the Act and Regulations and Transnet's safety requirements and procedures.

4. Special Permits

Where special permits are required before work may be carried out such as for hotwork, isolation permits, work permits and occupations, the Contractor shall apply to the Project Manager or the relevant authority for such permits to be issued. The Contractor shall strictly comply with the conditions and requirements pertaining to the issue of such permits.

"PREVIEW COPY ONLY"

5. Health and Safety Programme

- 5.1 The Tenderer shall, with his tender, submit a Health and Safety Programme setting out the practical arrangements and procedures to be implemented by him to ensure compliance by him with the Act and Regulations and particularly in respect of: -
- (i) The provision, as far as is reasonably practical, of a working environment that is safe and without risk to the health of his employees and subcontractors in terms of section 8 of the Act;
 - (ii) the execution of the contract work in such a manner as to ensure in terms of section 9 of the Act that persons other than those in the Contractor's employment, who may be directly affected by the contract work are not thereby exposed to hazards to their health and safety;
 - (iii) ensuring, as far as is reasonably practical, in terms of section 37 of the Act that no employee or subcontractor of the Contractor does or omits to do any act which would be an offence for the Contractor to do or omit to do.
- 5.2 The Contractor's Health and Safety Programme shall be based on a risk assessment in respect of the hazards to health and safety of his employees and other persons under his control that are associated with or directly affected by the Contractor's activities in performing the contract work and shall establish precautionary measures as are reasonable and practical in protecting the safety and health of such employees and persons.
- 5.3 The Contractor shall cause a risk assessment contemplated in clause 5.2 above to be performed by a competent person, appointed in writing, before commencement of any Construction Work and reviewed during construction. The Risk Assessments shall form part of the Health and Safety programme to be applied on the site and shall include at least the following:
- (a) The identification of the risks and hazards that persons may be exposed to;
 - (b) the analysis and evaluation of the hazards identified;
 - (c) a documented Health and Safety Plan, including safe work procedures to mitigate, reduce or control the risks identified;
 - (d) a monitoring and review plan.
- 5.4 The Health and Safety Plan shall include full particulars in respect of: -
- (a) The safety management structure to be instituted on site or place of work and the names of the Contractor's health and safety representatives and members of safety committees where applicable;
 - (b) the safe working methods and procedures to be implemented to ensure the work is performed in compliance with the Act and Regulations;
 - (c) the safety equipment, devices and clothing to be made available by the Contractor to his employees;

- (d) the site access control measures pertaining to health and safety to be implemented;
 - (e) the arrangements in respect of communication of health and safety related matters and incidents between the Contractor, his employees, subcontractors and the Project Manager with particular reference to the reporting of incidents in compliance with Section 24 and General Administrative Regulation 8 of the Act and with the pertinent clause of the General Conditions of Contract forming part of the Contract and
 - (f) the introduction of control measures for ensuring that the Safety Plan is maintained and monitored for the duration of the Contract.
- 5.4 The Health and Safety programme shall be subject to the Project Manager's approval and he may, in consultation with the Contractor, order that additional and/or supplementary practical arrangements and procedures be implemented and maintained by the Contractor or that different working methods or safety equipment be used or safety clothes be issued which, in the Project Manager's opinion, are necessary to ensure full compliance by the Contractor with his obligations as an employer in terms of the Act and Regulations. The Project Manager or his deputy shall be allowed to attend meetings of the Contractor's safety committee as an observer.
- 5.5 The Contractor shall take reasonable steps to ensure that each subcontractor's Health and Safety Plan is implemented and maintained on the construction site: Provided that the steps taken, shall include periodic audits at intervals mutually agreed to between the them, but at least once every month.
- 5.6 The Contractor shall stop any subcontractor from executing any construction work, which is not in accordance with the Contractor's, and/or subcontractor's Health and Safety Plan for the site or which poses a threat to the health and safety of persons.
- 5.7 The Contractor shall ensure that a copy of the Health and Safety Plan is available on site for inspection by an inspector, Project Manager, agent, subcontractor, employee, registered employee organisation, health and safety representative or any member of the health and safety committee.
- 5.8 The Contractor shall consult with the health and safety committee or, if no health and safety committee exists, with a representative group of employees, on the development, monitoring and review of the Risk Assessment.
- 5.9 The Contractor shall ensure that all employees under his control are informed, instructed and trained by a competent person regarding any hazard and the related work procedures before any work commences, and thereafter at such times as may be determined in the Risk Assessment.
- 5.10 The Contractor shall ensure that all subcontractors are informed regarding any hazard as stipulated in the Risk Assessment before any work commences, and thereafter at such times as may be determined in the Risk Assessment.

- 5.11 The Contractor shall ensure that all visitors to a construction site undergoes health and safety induction pertaining to the hazards prevalent on the site and shall be provided with the necessary personal protective equipment.

6. Fall Protection Plan

- 6.1 In the event of the risk and hazard identification, as required in terms of clause 5.3 of this Specification, revealing risks relating to working from an elevated position the contractor shall cause the designation of a competent person, responsible for the preparation of a fall protection plan;
- 6.2 The Contractor shall implement, maintain and monitor the fall protection plan for the duration of Contract. The Contractor shall also take such steps to ensure the continued adherence to the fall protection plan.
- 6.3 The fall protection plan shall include:-
- (a) A Risk Assessment of all work carried out from an elevated position;
 - (b) the procedures and methods to address all the identified risks per location;
 - (c) the evaluation of the employees physical and psychological fitness necessary to work at elevated positions;
 - (d) the training of employees working from elevated positions; and
 - (e) the procedure addressing the inspection, testing and maintenance of all fall protection equipment.

7. Hazards and Potential Hazardous Situations

The Contractor and the Project Manager shall immediately notify one another of any hazardous or potentially hazardous situations which may arise during performance of the Contract by the Contractor or any subcontractor and, in particular, of such hazards as may be caused by the design, execution and/or location and any other aspect pertaining to the contract work.

8. Health and Safety File

- 8.1 The Contractor shall ensure that a health and safety file is opened and kept on site and shall include all documentation required as per the Act and applicable regulations, and made available to an inspector, the Project Manager, or subcontractor upon request.
- 8.2 The Contractor shall ensure that a copy of the both his Health and Safety Plan as well as any subcontractor's Health and Safety Plan is available on request to an employee, inspector, contractor or the Project Manager.
- 8.3 The Contractor shall hand over a consolidated health and safety file to the Project Manager upon completion of the Construction Work and shall in addition to documentation mentioned in the Act and applicable Regulations include a record of all drawings, designs, materials used and other similar information concerning the completed structure.

ANNEXURE 1

OCCUPATIONAL HEALTH AND SAFETY ACT, 1993

Regulation 3(1) of the Construction Regulations

NOTIFICATION OF CONSTRUCTION WORK

-
-
- 1(a) Name and postal address of principal contractor:

- (b) Name and tel. no of principal contractor's contact person:

2. Principal contractor's compensation registration number: _____
- 3.(a) Name and postal address of client:

- (b) Name and tel no of client's contact person or agent:

- 4.(a) Name and postal address of designer(s) for the project:

- (b) Name and tel. no of designer(s) contact person:

5. Name and telephone number of principal contractor's construction supervisor on site appointed in terms of regulation 6(1).

6. Name/s of principal contractor's construction sub-ordinate supervisors on site appointed in terms of regulation 6(2).

7. Exact physical address of the construction site or site office:

8. Nature of the construction work:

9. Expected commencement date: _____
10. Expected completion date: _____

11. Estimated maximum number of persons on the construction site: _____

12. Planned number of contractors on the construction site accountable to the principle contractor:

13. Name(s) of contractors already chosen.

Principal Contractor

Date

Client

Date

* THIS DOCUMENT IS TO BE FORWARDED TO THE OFFICE OF THE DEPARTMENT OF LABOUR **PRIOR TO COMMENCEMENT** OF WORK ON SITE.

* **ALL PRINCIPAL CONTRACTORS** THAT QUALIFY TO NOTIFY MUST DO SO EVEN IF ANOTHER PRINCIPAL CONTRACTOR ON THE SAME SITE HAD DONE SO PRIOR TO THE COMMENCEMENT OF WORK.

ANNEXURE 2

(COMPANY LETTER HEAD)

OCCUPATIONAL HEALTH AND SAFETY ACT, 1993 (ACT 85 OF 1993) :

SECTION/REGULATION: _____

REQUIRED COMPETENCY: _____

In terms of _____ I, _____

representing the Employer) do hereby appoint _____

As the Competent Person on the premises at _____

(physical address) to assist in compliance with the Act and the applicable Regulations.

Your designated area/s is/are as follows :-

Date : _____

Signature :- _____

Designation :- _____

ACCEPTANCE OF DESIGNATION

I, _____ do hereby accept this Designation and acknowledge that I understand the requirements of this appointment.

Date : _____

Signature :- _____

Designation :- _____

ANNEXURE 3

(COMPANY LETTER HEAD)

OCCUPATIONAL HEALTH AND SAFETY ACT, 1993 (ACT 85 OF 1993) :

DECLARATION

In terms of the above Act I, _____ am personally assuming the duties and obligations as Chief Executive Officer, defined in Section 1 of the Act and in terms of Section 16(1), I will, as far as is reasonably practicable, ensure that the duties and obligations of the Employer as contemplated in the above Act are properly discharged.

Signature :-

Date :

ANNEXURE 4

(LETTER HEAD OF BUSINESS DIVISION OR UNIT OF TRANSNET SOC LTD)

SITE ACCESS CERTIFICATE

Access to : _____ (Area)
Name of Contractor/Builder :- _____
Contract/Order No.: _____

The contract works site/area described above are made available to you for the carrying out of associated works

In terms of your contract/order with
(company) _____

Kindly note that you are at all times responsible for the control and safety of the Works Site, and for persons under your control having access to the site.

As from the date hereof you will be responsible for compliance with the requirements of the Occupational Health and Safety Act, 1993 (Act 85 of 1993) as amended, and all conditions of the Contract pertaining to the site of the works as defined and demarcated in the contract documents including the plans of the site or work areas forming part thereof.

Signed : _____ Date : _____
PROJECT MANAGER

ACKNOWLEDGEMENT OF RECEIPT

Name of Contractor/Builder :- _____ I,
_____ do hereby acknowledge and accept the duties
and obligations in respect of the Safety of the site/area of Work in terms of the Occupational Health and
Safety Act; Act 85 of 1993.

Name : _____ Designation : _____

Signature : _____ Date : _____

TRANSNET



Transnet SOC Limited Registration Number 1990/00900/06

TRANSNET SPECIFICATION

E7/1 - SPECIFICATION FOR GENERAL WORK AND WORKS ON, OVER, UNDER OR ADJACENT TO RAILWAY LINES AND NEAR HIGH VOLTAGE EQUIPMENT









(This specification shall be used in network operator contracts)

Circulation Not Restricted

© This document as a whole is protected by copyright. The information herein is the sole property of Transnet SOC Ltd. It may not be used, disclosed or reproduced in part or in whole in any manner whatsoever, except with the written permission of and in a manner permitted by the proprietors.

(This page not to be issued with contract)

**SPECIFICATION FOR GENERAL WORK AND WORKS ON, OVER, UNDER OR
ADJACENT TO RAILWAY LINES AND NEAR HIGH VOLTAGE EQUIPMENT**

Author:	Project Manager Capital Program (Electrical)	G. Maposa	
Approved:	Senior Engineer Infra Engineering (Train Authorisation Systems)	J. van den Berg	
"	Principal Engineer Infra Engineering (Track)	M. Marutla	
"	Principal Engineer Infra Engineering (Structures)	J. Hornan	
"	Principal Engineer Infra Engineering (Electrical)	J. Vosloo	
"	Principal Engineer Technology Management (Electrical)	W. Coetzee	
"	Chief Engineer Transport Telecoms	D. Botha	 17 June 11
Authorised:	Chief Engineer Infrastructure Engineering	J. van Aardt	 2011/06/30

Date: May 2011

(This page not to be issued with contract)

TRANSNET



Transnet SOC Limited Registration Number 1990/00900/06

TRANSNET SPECIFICATION

E7/1 - SPECIFICATION FOR GENERAL WORK AND WORKS ON, OVER, UNDER OR ADJACENT TO RAILWAY LINES AND NEAR HIGH VOLTAGE EQUIPMENT

(This specification shall be used in network operator contracts)

Circulation Not Restricted

© This document as a whole is protected by copyright. The information herein is the sole property of Transnet SOC Ltd. It may not be used, disclosed or reproduced in part or in whole in any manner whatsoever, except with the written permission of and in a manner permitted by the proprietors.

CONTENTS

<u>CLAUSE</u>	<u>HEADING</u>	<u>PAGE</u>
1.0	SCOPE	3
2.0	DEFINITIONS	3
	PART A - GENERAL SPECIFICATION	
3.0	AUTHORITY OF OFFICERS OF TRANSNET	4
4.0	CONTRACTOR'S REPRESENTATIVES AND STAFF	4
5.0	OCCUPATIONS AND WORK PERMITS	4
6.0	SPEED RESTRICTIONS AND PROTECTION	5
7.0	ROADS ON THE NETWORK OPERATOR'S PROPERTY	5
8.0	CLEARANCES	5
9.0	STACKING OF MATERIAL	5
10.0	EXCAVATION, SHORING, DEWATERING AND DRAINAGE	5
11.0	FALSEWORK FOR STRUCTURES	6
12.0	PILING	6
13.0	UNDERGROUND SERVICES	6
14.0	BLASTING AND USE OF EXPLOSIVES	6
15.0	RAIL TROLLEYS	7
16.0	SIGNAL TRACK CIRCUITS	7
17.0	PENALTY FOR DELAYS TO TRAINS	7
18.0	SURVEY BEACONS AND PEGS	7
19.0	TEMPORARY LEVEL CROSSINGS	8
20.0	COMPLETION OF THE WORKS	8
21.0	PROTECTION OF PERSONS AND PROPERTY	9
22.0	INTERFERENCE WITH THE NETWORK OPERATOR'S ASSETS AND WORK ON OPEN LINES	10
23.0	ACCESS, RIGHTS-OF-WAY AND CAMPSITES	10
24.0	SUPERVISION	10
25.0	HOUSING OF EMPLOYEES	10
26.0	OPTICAL FIBRE CABLE ROUTES	10
	PART B - ADDITIONAL SPECIFICATION FOR WORK NEAR HIGH-VOLTAGE ELECTRICAL EQUIPMENT	
27.0	GENERAL	11
28.0	WORK ON BUILDINGS OR FIXED STRUCTURES	11
29.0	WORK DONE ON OR OUTSIDE OF ROLLING STOCK, INCLUDING LOADING AND UNLOADING	11
30.0	USE OF EQUIPMENT	12
31.0	CARRYING AND HANDLING MATERIAL AND EQUIPMENT	12
32.0	PRECAUTIONS TO BE TAKEN WHEN ERECTING OR REMOVING POLES, ANTENNAE AND TREES ETC.	12
33.0	USE OF WATER	13
34.0	USE OF CONSTRUCTION PLANT	13
35.0	WORK PERFORMED UNDER DEAD CONDITIONS UNDER COVER OF A WORK PERMIT	13
36.0	TRACTION RETURN CIRCUITS IN RAILS	13
37.0	HIGH-VOLTAGE ELECTRICAL EQUIPMENT NOT MAINTAINED AND/OR OPERATED BY THE NETWORK OPERATOR	14

1.0 SCOPE

- 1.1 This specification covers the network operator's requirements for general work and works on, over, under or adjacent to railway lines and near high voltage equipment.

2.0 DEFINITIONS

The following definitions shall apply:

"Authorised Person" - A person whether an employee of the network operator or not, who has been specially authorised to undertake specific duties in terms of Transnet's publication Electrical Safety Instructions, and who holds a certificate or letter of authority to that effect.

"Barrier" Any device designed to restrict access to "live" high-voltage electrical equipment.

"Bond" - A short conductor installed to provide electrical continuity.

"Contractor" - Any person or organisation appointed by the network operator to carry out work on its behalf.

"Contract Supervisor" - The person or juristic person appointed by the network operator from time to time as the Contract Supervisor, to administer the Contractor's performance and execution of the Works according to the powers and rights held by and obligations placed upon the Contract Supervisor in terms of the Contract.

"Dead" - Isolated and earthed.

"Electrical Officer (Contracts)" - The person appointed in writing by the Project Manager in terms of this specification as the person who shall be consulted by the Contractor in all electrical matters to ensure that adequate safety precautions are taken by the Contractor.

"Executive Officer" - The person appointed by the network operator from time to time as the Executive Officer to act according to the rights and powers held by and obligations placed upon him in terms of the Contract.

"High-Voltage" - A voltage normally exceeding 1000 volts.

"Live" - A conductor is said to be "live" when it is at a potential different from that of the earth or any other conductor of the system of which it forms a part.

"Near" - To be in such a position that a person's body or the tools he is using or any equipment he is handling may come within 3 metres of "live" exposed high-voltage electrical equipment.

"Occupation" - An authorisation granted by the network operator for work to be carried out under specified conditions on, over, under or adjacent to railway lines.

"Occupation Between Trains" - An occupation during an interval between successive trains.

"Optical Fibre Cable" - Buried or suspended composite cable containing optical fibres used in:

- telecommunication networks for transmission of digital information and
- safety sensitive train operations systems.

"Project Manager" - As defined in the special conditions of the contract. The person or juristic person appointed by the network operator from time to time as the Project Manager, to administer the Contract according to the powers and rights held by and obligations placed upon him in terms of the Contract.

"Responsible Representative" - The responsible person in charge, appointed by a contractor, who has undergone specific training (and holds a certificate) to supervise (general or direct) staff under his control who perform general work or to work on, over, under or adjacent to railway lines and in the vicinity of high-voltage electrical equipment.

"Total Occupation" - An occupation for a period when trains are not to traverse the section of line covered by the occupation.

"Work on" - Work undertaken on or so close to the equipment that the specified working clearances to the "live" equipment cannot be maintained.

"Work Permit" - A combined written application and authority to proceed with work on or near dead electrical equipment.

"Works" - The contractual intent for the work to be done as defined in the contract at a defined work site.

PART A - GENERAL SPECIFICATION**3.0 AUTHORITY OF OFFICERS OF TRANSNET**

- 3.1 The Contractor shall co-operate with the officers of the network operator and shall comply with all instructions issued and restrictions imposed with respect to the Works which bear on the existence and operation of the network operator's railway lines and high-voltage equipment.
- 3.2 Without limiting the generality of the provisions of clause 3.1, any duly authorised representative of the network operator, having identified himself, may stop the work if, in his opinion, the safe passage of trains or the safety of the network operator's assets or any person is affected. **CONSIDERATIONS OF SAFETY SHALL TAKE PRECEDENCE OVER ALL OTHER CONSIDERATIONS.**

4.0 CONTRACTOR'S REPRESENTATIVES AND STAFF

- 4.1 The Contractor shall nominate Responsible Representatives of whom at least one shall be available at any hour for call-out in cases of emergency. The Contractor shall provide the Contract Supervisor with the names, addresses and telephone numbers of the representatives.
- 4.2 The Contractor guarantees that he has satisfied himself that the Responsible Representative is fully conversant with this specification and that he shall comply with all his obligations in respect thereof.
- 4.3 The Contractor shall ensure that all contractor staff receives relevant awareness, educational and competence training regarding safety as prescribed.

5.0 OCCUPATIONS AND WORK PERMITS

- 5.1 Work to be done during total occupation or during an occupation between trains or under a work permit shall be done in a manner decided by the Contract Supervisor and at times to suit the network operator requirements.
- 5.2 The Contractor shall organise the Works in a manner which will minimise the number and duration of occupations and work permits required.
- 5.3 The network operator will not be liable for any financial or other loss suffered by the Contractor arising from his failure to complete any work scheduled during the period of an occupation or work permit.
- 5.4 The Contractor shall submit to the Contract Supervisor, in writing, requests for occupations or work permits together with details of the work to be undertaken, at least 21 days before they are required. The network operator does not undertake to grant an occupation or work permit for any particular date, time or duration.
- 5.5 The network operator reserves the right to cancel any occupation or work permit at any time before or during the period of occupation or work permit. If, due to cancellation or change in date or time, the Contractor is not permitted to start work under conditions of total occupation or work permit at the time arranged, all costs caused by the cancellation shall be born by the Contractor except as provided for in clauses 5.6 to 5.8.
- 5.6 When the Contractor is notified less than 2 hours before the scheduled starting time that the occupation or work permit is cancelled, he may claim reimbursement of his direct financial losses caused by the loss of working time up to the time his labour and plant are employed on other work, but not exceeding the period of the cancelled occupation or work permit.
- 5.7 When the Contractor is notified less than 2 hours before the scheduled starting time, or during an occupation or work permit, that the duration of the occupation or work permit is reduced, he may claim reimbursement of his direct financial losses caused by the loss of working time due to the reduced duration of the occupation or work permit.
- 5.8 Reimbursement of the Contractor for any loss of working time in terms of clause 5.6 and 5.7, shall be subject to his claims being submitted within 14 days of the event with full details of labour and plant involved, and provided that the Contract Supervisor certifies that no other work on which the labour and plant could be employed was immediately available.
- 5.9 Before starting any work for which an occupation has been arranged, the Contractor shall obtain from the Contract Supervisor written confirmation of the date, time and duration of the occupation.
- 5.10 Before starting any work for which a work permit has been arranged, the Responsible Representative shall read and sign portion C of the Work Permit, signifying that he is aware of the work boundaries within which work may be undertaken. After the work for which the permit was granted has been completed, or when the

work permit is due to be terminated, or if the permit is cancelled after the start, the same person who signed portion C shall sign portion D of the Work Permit, thereby acknowledging that he is aware that the electrical equipment is to be made "live". The Contractor shall advise all his workmen accordingly.

6.0 SPEED RESTRICTIONS AND PROTECTION

- 6.1 When speed restrictions are imposed by the network operator because of the Contractor's activities, the Contractor shall organise and carry out his work so as to permit the removal of the restrictions as soon as possible.
- 6.2 When the Contract Supervisor considers protection to be necessary the Contractor shall, unless otherwise agreed, provide all protection including flagmen, other personnel and all equipment for the protection of the network operator's and the Contractor's personnel and assets, the public and including trains.
- 6.2.1 The network operator will provide training free of charge of the Contractor's flagmen and other personnel performing protection duties. The Contractor shall consult with the Contract Supervisor, whenever he considers that protection will be necessary, taking into account the minimum permissible clearances set out in the Manual for Track Maintenance (Document no. BBB0481):

- Drawing no. BE-97 Sheet 1: Horizontal Clearances: 1065mm gauge (Annexure 1 sheet 1)
- Drawing no. BE-97 Sheet 2: Vertical Clearances: 1065mm gauge (Annexure 1 sheet 2)
- Drawing no. BE-97 Sheet 3: Clearances: Platform (Annexure 1 sheet 3)
- Drawing no. BE-97 Sheet 5: Clearances: 610mm Gauge (Annexure 1 sheet 5)

- 6.3 The Contractor shall appoint a Responsible Representative to receive and transmit any instruction which may be given by the network operator personnel providing protection.

7.0 ROADS AND ROADS ON THE NETWORK OPERATOR'S PROPERTY

- 7.1 The Contractor shall take every reasonable precaution to prevent damage to any roads or bridges used to obtain access to the site, and shall select routes, use vehicles, and restrict loads so that any extraordinary traffic as may arise from the moving of plant or material to or from the site shall be limited as far as is reasonably possible.
- 7.2 The Contractor shall not occupy or interfere in any way with the free use of any public or private road, right-of-way, path or street unless the Contract Supervisor has obtained the approval of the road authority concerned.

8.0 CLEARANCES

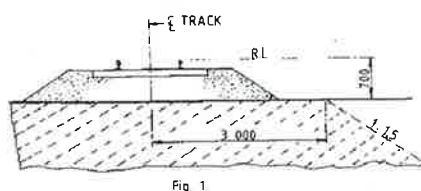
- 8.1 No temporary works shall encroach on the appropriate minimum clearances set out in the Manual for Track Maintenance (Document no. BBB0481):
- Drawing no. BE-97 Sheet 1: Horizontal Clearances: 1065mm gauge (Annexure 1 sheet 1)
 - Drawing no. BE-97 Sheet 2: Vertical Clearances: 1065mm gauge (Annexure 1 sheet 2)
 - Drawing no. BE-97 Sheet 3: Clearances: Platform (Annexure 1 sheet 3)
 - Drawing no. BE-97 Sheet 5: Clearances: 610mm Gauge (Annexure 1 sheet 5)

9.0 STACKING OF MATERIAL

- 9.1 The Contractor shall not stack any material closer than 3m from the centre line of any railway line without prior approval of the Contract Supervisor.

10.0 EXCAVATION, SHORING, DEWATERING AND DRAINAGE

- 10.1 Unless otherwise approved by the Contract Supervisor any excavation adjacent to a railway line shall not encroach on the hatched area shown in Figure 1.



- 10.2 The Contractor shall provide, at his own cost any shoring, dewatering or drainage of any excavation unless otherwise stipulated elsewhere in the Contract.
- 10.3 Where required by the Contract Supervisor, drawings of shoring for any excavation under or adjacent to a railway line shall be submitted and permission to proceed, obtained before the excavation is commenced.
- 10.4 The Contractor shall prevent ingress of water to the excavation but where water does enter, he shall dispose of it as directed by the Contract Supervisor.
- 10.5 The Contractor shall not block, obstruct or damage any existing drains either above or below ground level unless he has made adequate prior arrangements to deal with drainage.

11.0 FALSEWORK FOR STRUCTURES

- 11.1 Drawings of falsework for the construction of any structure over, under or adjacent to any railway line shall be submitted to the Contract Supervisor and his permission to proceed obtained before the falsework is erected. Each drawing shall be given a title and a distinguishing number and shall be signed by a registered professional engineer certifying that he has checked the design of the falsework and that the drawings are correct and in accordance with the design.
- 11.2 After the falsework has been erected and before any load is applied, the Contractor shall submit to the Contract Supervisor a certificate signed by a registered professional engineer certifying that he has checked the falsework and that it has been erected in accordance with the drawings. Titles and numbers of the drawings shall be stated in the certificate. Notwithstanding permission given by the Contract Supervisor to proceed, the Contractor shall be entirely responsible for the safety and adequacy of the falsework.

12.0 PILING

- 12.1 The Contract Supervisor will specify the conditions under which piles may be installed on the network operator's property.

13.0 UNDERGROUND SERVICES

- 13.1 No pegs or stakes shall be driven or any excavation made before the Contractor has established that there are no underground services which may be damaged thereby.
- 13.2 Any damage shall be reported immediately to the Contract Supervisor, or to the official in charge at the nearest station, or to the traffic controller in the case of centralised traffic control.

14.0 BLASTING AND USE OF EXPLOSIVES

- 14.1 When blasting within 500m of a railway line, the Contractor shall observe the requirements stipulated in this specification.
- 14.2 No blasting shall be carried out except with the prior written permission of the Contract Supervisor and under such conditions as he may impose.
- 14.3 On electrified lines the Contractor shall also obtain the permission of the Electrical Officer (Contracts) before blasting, and shall give at least 21 days notice of his intention to blast. No blasting shall be done in the vicinity of electrified lines unless a member of the network operator's electrical personnel is present.
- 14.4 The Contractor shall arrange for the supply, transport storage and use of explosives.
- 14.5 The Contractor shall have labour, tools and plant, to the satisfaction of the Contract Supervisor, available on the site to clear immediately any stones or debris deposited on the track or formation by blasting, and to repair any damage to the track or formation immediately after blasting. Repairs to the track shall be carried out only under the supervision of a duly authorised representative of the network operator.
- 14.6 The Contractor shall notify the Contract Supervisor of his intention to blast at least 21 days before the commencement of any blasting operations.
- 14.7 Before any blasting is undertaken, the Contractor and the Contract Supervisor shall jointly examine and measure up any buildings, houses or structures in the vicinity of the proposed blasting to establish the extent of any existing cracking or damage to such structures, etc. The Contractor, shall, subject to the provisions stipulated in the Contract Insurance Policy, make good any deterioration of such buildings, houses, or structures, which, in the opinion of the Contract Supervisor, was directly caused by the blasting.
- 14.8 After completion of the blasting the Contractor shall obtain a written clearance from each landowner in

the vicinity of the blasting operations to the effect that all claims for compensation in respect of damage caused by the blasting operations to their respective properties, have been settled.

- 14.9 The Contractor shall provide proof that he has complied with the provisions of clauses 10.17.1 to 10.17.4 of the Explosives Regulations (Act 26 of 1956 as amended).

- 14.10 Blasting within 500m of a railway line will only be permitted during intervals between trains. A person appointed by the Contract Supervisor, assisted by flagmen with the necessary protective equipment, will be in communication with the controlling railway station.

Only this person will be authorised to give the Contractor permission to blast, and the Contractor shall obey his instructions implicitly regarding the time during which blasting may take place.

- 14.11 The flagmen described in clause 14.10, where provided by the network operator, are for the protection of trains and the network operator's property only, and their presence does not relieve the Contractor in any manner of his responsibilities in terms of Explosives Act or Regulations, or any obligation in terms of this Contract.

- 14.12 The person described in clause 14.10 will record in a book provided and retained by the network operator, the dates and times:-

(i) when each request is made by him to the controlling station for permission to blast;

(ii) when blasting may take place;

(iii) when blasting actually takes place; and

(iv) when he advises the controlling station that the line is safe for the passage of trains.

- 14.13 Before each blast the Contractor shall record in the same book, the details of the blast to be carried out. The person appointed by the Contract Supervisor and the person who will do the blasting shall both sign the book whenever an entry described in clause 14.12 is made.

15.0 RAIL TROLLEYS

- 15.1 The use of rail trolleys or trestle trolleys on a railway line for working on high voltage equipment will be permitted only if approved by the Contract Supervisor and under the conditions stipulated by him.

- 15.2 All costs in connection with trolley working and any train protection services requested by the Contractor shall, be borne by the Contractor, unless otherwise agreed.

16.0 SIGNAL TRACK CIRCUITS

- 16.1 Where signal track circuits are installed, the Contractor shall ensure that no material capable of conducting an electrical current makes contact between rails of railway line/lines.

- 16.2 No signal connections on track-circuited tracks shall be severed without the Contract Supervisor's knowledge and consent.

17.0 PENALTY FOR DELAYS TO TRAINS

- 17.1 If any trains are delayed by the Contractor and the Contract Supervisor is satisfied that the delay was avoidable, a penalty will be imposed on the Contractor as stipulated in the contract, for the period and number of trains delayed.

18.0 SURVEY BEACONS AND PEGS

- 18.1 The Contractor shall not on any account move or damage any beacon, bench mark, reference mark, signal or trigonometrical station in the execution of the Works without the written approval of the Contract Supervisor.

Should the Contractor be responsible for any such occurrence, he shall report the circumstances to the Contract Supervisor who will arrange with the Director-General of Surveys for replacement of the beacon or mark at the cost of the Contractor.

- 18.2 The Contractor shall not move or damage any cadastral or mining beacon without the written approval of the Contract Supervisor and before it has been referenced by a registered land surveyor. Any old boundary beacon, which becomes an internal beacon on creation of new boundaries, shall not be moved without the written approval of the Contract Supervisor.

Should the Contractor move or damage any cadastral or mining beacon without authority, he shall be responsible for having it replaced, at his cost, by a land surveyor.

- 18.3 The Contractor shall preserve all pegs and bench marks. Such survey points shall not be removed without the written approval of the Contract Supervisor. Should any peg or benchmark be removed without authority, the Contract Supervisor will arrange for its replacement and the cost will be recovered from the Contractor. No claim will be considered for delay in replacing any such peg or bench mark. Each peg replaced shall be checked by the Contractor.
- 18.4 Where a new boundary has been established, beacons on the fence line shall not be disturbed, and fence posts or anchors may not be placed or excavations made within 0,6 m of any beacon without the prior written approval of the Contract Supervisor.

19.0 TEMPORARY LEVEL CROSSINGS

- 19.1 The Contract Supervisor may, on request of the Contractor, and if necessary for the purpose of execution of the Works, permit the construction of a temporary level crossing over a railway a line at a position approved by the Contract Supervisor and at the Contractor's cost. The period for which the temporary level crossing is permitted will be at the discretion of the Contract Supervisor.

- 19.2 The Contractor will provide protection and supervise the construction of the road over the track(s) and within the railway servitude at the level crossing, as well as the erection of all road signs and height gauges. All cost to be borne by the applicant.

The Contractor shall exercise extreme caution in carrying out this work, especially in respect of damage to tracks, services, overhead power and communications routes and prevent contact with "live" overhead electrical equipment.

Unless otherwise agreed, the Contractor will provide the service deviations or alterations to the network operator's track-, structure-, drainage-, electrical-, telecommunications- and train authorisation systems to accommodate the level crossing.

- 19.3 The Contractor shall take all necessary steps including the provision of gates, locks and, where necessary, watchmen to restrict the use of the temporary level crossing to himself and his employees, his subcontractors and their employees, the staff of the network operator and to such other persons as the Contract Supervisor may permit and of whose identity the Contractor will be advised. If so ordered by the Contract Supervisor, the Contractor shall provide persons to control road traffic using the temporary level crossing. Such persons shall stop all road traffic when any approaching train is within seven hundred and fifty (750) metres of the temporary level crossing, and shall not allow road traffic to proceed over it until the lines are clear.
- 19.4 The Contractor shall maintain the temporary level crossing within the railway servitude in good condition for the period it is in use. A temporary agreement with the road authority to be concluded for the maintenance of the level crossing outside the railway servitude.
- 19.5 When the temporary level crossing is no longer required by the Contractor, or permitted by the network operator, the Contractor shall at his own cost remove it and restore the site and the network operator's track-, structure-, drainage-, electrical-, telecommunications- and train authorisation systems to its original condition. Work over the tracks and within the railway servitude will be supervised by the network operator.

20.0 COMPLETION OF THE WORKS

- 20.1 On completion of the works, the Contractor shall remove all the remaining construction plant and material from the site, other than material which is the property of the network operator, and leave the site in a clean, neat and tidy condition. If material and plant is required for the liability and maintenance period the Contract supervisor must authorise it's retention on site.

21.0 PROTECTION OF PERSONS AND PROPERTY

- 21.1 The Contractor shall provide and maintain all lights, guards, barriers, fencing and watchmen when and where necessary or as required by the Contract Supervisor or by any statutory authority, for the protection of the Works and for the safety and convenience of the public.

Red, yellow, green or blue lights may not be used by the Contractor as they can be mistaken for signals. Red, yellow, green or white flags shall only be used for protection by the Contractor. Within the precincts of a port the Contractor shall obtain the permission of the Port Captain before installing any light.

- 21.2 The Contractor shall take all the requisite measures and precautions during the course of the Works to:
- (i) protect the public and property of the public,
 - (ii) protect the property and workmen of both the network operator and the Contractor,
 - (iii) avoid damage to and prevent trespass on adjoining properties, and
 - (iv) ensure compliance with any instruction issued by the Contract Supervisor or other authorised person, and with any stipulation embodied in the contract documents which affects the safety of any person or thing.
- 21.3 The network operator will provide, at its own cost, protection for the safe working of trains during such operations as the Contract Supervisor may consider necessary. Protection by the network operator for any purpose whatsoever, does not absolve the Contractor of his responsibilities in terms of the Contract.
- 21.4 The Contractor shall take all precautions and appoint guards, watchmen and compound managers for prevention of disorder among and misconduct by the persons employed on the Works and by any other persons, whether employees or not, on the work site and for the preservation of the peace and protection of persons and property in the direct neighbourhood. Any relocation of camps because of disorder shall be at the Contractor's expense.
- 21.5 All operations necessary for the execution of the Works, including the provision of any temporary work and camping sites, shall be carried out so as not to cause veldt fires, ground and environmental pollution, soil erosion or restriction of or interference with streams, furrows, drains and water supplies.
- If the original surface of the ground is disturbed in connection with the Works, it shall be made good by the Contractor to the satisfaction of the land owner, occupier or responsible authority.
- 21.6 The Contractor shall take all reasonable steps to minimise noise and disturbance when carrying out the Works, including work permitted outside normal working hours.
- 21.7 Dumping of waste or excess materials by the Contractor shall, in urban areas, be done under the direction and control of, and at sites made available by the local authority. Dumping outside local authority boundaries shall be done only with the express permission and under the direction and control of the Contract Supervisor.
- 21.8 The Contractor shall comply with environmental protection measures and specifications stipulated by the Contract Supervisor and/or local and environmental authorities.
- 22.0 INTERFERENCE WITH THE NETWORK OPERATOR'S ASSETS AND WORK ON OPEN LINES**
- 22.1 The Contractor shall not interfere in any manner whatsoever with an open line, nor shall he carry out any work or perform any act which affects the security, use or safety of an open line except with the authority of the Contract Supervisor and in the presence of a duly authorised representative of the network operator.
- 22.2 The Contractor shall not carry out any work or operate any plant, or place any material whatsoever nearer than three metres from the centre line of any open line except with the written permission of the Contract Supervisor and subject to such conditions as he may impose.
- 22.3 Care must be taken not to interfere with or damage any services such as overhead wire routes, cables or pipes and optical fibre cable, except as provided for the work specified. The Contractor will be held responsible for any damage to or interruption of such services arising from any act or omission on his part or of any of his employees, or persons engaged by him on the Works. The cost of repairing, replacing or restoring the services, as well as all other costs arising from any damage to services, shall be borne by, and will be recovered from the Contractor.
- 22.4 Authority granted by the Contract Supervisor and the presence of an authorised representative of the network operator in terms hereof, shall not relieve the Contractor of his duty to comply with this specification.
- 23.0 ACCESS, RIGHTS-OF-WAY AND CAMPSITES**
- 23.1 Where entry onto the network operator's property is restricted, permission to enter will be given only for the purpose of carrying out the Works and will be subject to the terms and conditions laid down by the network operator.
- 23.2 The Contractor shall arrange for campsites, workplaces and access thereto as well as for any right-of-

way over private property to the site of the Works, and for access within the boundaries of the network operator's property. The owners of private property to be traversed shall be approached and treated with tact and courtesy by the Contractor, who shall, if necessary, obtain a letter of introduction to such property owners from the Contract Supervisor.

The Contractor shall be responsible for the closing of all gates on roads and tracks used by him or his employees. Except with the prior approval of the Contract Supervisor and the owner or occupier of any private land to be traversed, the Contractor shall not cut, lower, damage, remove or otherwise interfere with any fence or gate which is either on the network operator's property or on private property and which restricts access to the Works. Where such approval has been given, the Contractor shall prevent entry of animals or unauthorised persons onto the network operator's or private property, and shall make the fences safe against trespass at the close of each day's work.

- 23.3 The Contractor shall take all reasonable steps to confine the movement of vehicles and plant to the approved right-of-way to minimise damage to property, crops and natural vegetation.
- 23.4 When access is no longer required, and before completion of the Works, the Contractor shall repair, restore or replace any fence or gate damaged during execution of the Works to the satisfaction of the Contract Supervisor and shall furnish the Contract Supervisor with a certificate signed by the owner and occupier of land over which he has gained access to a campsite, workplace and the Works, certifying that the owner and occupier have no claim against the Contractor or the network operator arising from the Contractor's use of the land. Should the Contractor be unable to obtain the required certificate, he shall report the circumstances to the Contract Supervisor.

24.0 SUPERVISION

- 24.1 The Contract Supervisor will provide overall technical superintendence of the Works, and may direct the Contractor in terms of the provisions of the Contract or in respect of any measures which the Contract Supervisor may require for the operations of the network operator, the safety of trains, property and workmen of the network operator, and for the safety of other property and persons. The Contractor shall carry out the directions of the Contract Supervisor. The superintendence exercised by the Contract Supervisor, including any agreement, approval, refusal or withdrawal of any approval given, shall not relieve the Contractor of any of his duties and liabilities under the Contract, and shall not imply any assumption by the network operator or by the Contract Supervisor of the legal and other responsibilities of the Contractor in carrying out the Works.
- 24.2 The Contract Supervisor may delegate to any deputy or other person, any of his duties or functions under the Contract. On receiving notice in writing of such delegation, the Contractor shall recognise and obey the deputy or person to whom any such duties or functions have been delegated as if he were the Contract Supervisor.
- 24.3 The Contractor shall exercise supervision over the Works at all times when work is performed or shall be represented by an agent having full power and authority to act on behalf of the Contractor. Such agent shall be competent and responsible, and have adequate experience in carrying out work of a similar nature to the Works, and shall exercise personal supervision on behalf of the Contractor. The Contract Supervisor shall be notified in writing of such appointment which will be subject to his approval.
- 24.4 The Contractor or his duly authorised agent shall be available on the site at all times while the Works are in progress to receive the orders and directions of the Contract Supervisor.

25.0 HOUSING OF EMPLOYEES

- 25.1 The Contractor shall, where necessary, make his own arrangements for suitable housing of his employees. Where temporary housing is permitted by the Contract Supervisor on any part of the site, the Contractor shall provide suitable sanitation, lighting and potable water supplies in terms of the requirements of the local authority or the current network operator's specification; Minimum Communal Health Requirements in Areas outside the Jurisdiction of a Local Authority - E.4B, as applicable.
- 25.2 Fouling the area inside or outside the network operator's boundaries shall be prevented. The Contractor will be called upon by the Contract Supervisor to dispose of any foul or waste matter generated by the Contractor.

26.0 OPTICAL FIBRE CABLE ROUTES

- 26.1 The Contractor shall not handle, impact, move or deviate any optical fibre cable without prior approval.
- 26.2 Works that in any way affect the optical fibre cable requires prior approval from the Contract Supervisor

who will determine the work method and procedures to be followed.

"PREVIEW COPY ONLY"

PART B - SPECIFICATION FOR WORK NEAR HIGH-VOLTAGE ELECTRICAL EQUIPMENT

27.0 GENERAL

- 27.1 This specification is based on the contents of Transnet's publication ELECTRICAL SAFETY INSTRUCTIONS, as amended, a copy of which will be made available on loan to the Contractor for the duration of the contract.

These instructions apply to all work near "live" high-voltage equipment maintained and/or operated by the network operator, and the onus rests on the Contractor to ensure that he obtains a copy.

- 27.2 This specification must be read in conjunction with and not in lieu of the Electrical Safety Instructions.
- 27.3 The Contractor's attention is drawn in particular to the contents of Part I, Sections 1 and 2 of the Electrical Safety Instructions.
- 27.4 The Electrical Safety Instructions cover the minimum safety precautions which must be taken to ensure safe working on or near high-voltage electrical equipment, and must be observed at all times. Should additional safety measures be considered necessary because of peculiar local conditions, these may be ordered by and at the discretion of the Electrical Officer (Contracts).
- 27.5 The Contractor shall obtain the approval of the Electrical Officer (Contracts) before any work is done which causes or could cause any portion of a person's body or the tools he is using or any equipment he is handling, to come within 3 metres of any "live" high-voltage equipment.
- 27.6 The Contractor shall regard all high-voltage equipment as "live" unless a work permit is in force.
- 27.7 Safety precautions taken or barriers erected shall comply with the requirements of the Electrical Officer (Contracts), and shall be approved by him before the work to be protected is undertaken by the Contractor. The Contractor shall unless otherwise agreed, bear the cost of the provision of the barriers and other safety precautions required, including the attendance of the network operator's staff where this is necessary.
- 27.8 No barrier shall be removed unless authorised by the Electrical Officer (Contracts).

28.0 WORK ON BUILDINGS OR FIXED STRUCTURES

- 28.1 Before any work is carried out or measurements are taken on any part of a building, fixed structure or earthworks of any kind above ground level situated within 3 metres of "live" high-voltage equipment, the Electrical Officer (Contracts) shall be consulted to ascertain the conditions under which the work may be carried out.
- 28.2 No barrier erected to comply with the requirements of the Electrical Officer (Contracts) shall be used as temporary staging or shuttering for any part of the Works.
- 28.3 The shuttering for bridge piers, abutments, retaining walls or parapets adjacent to or over any track may be permitted to serve as a barrier, provided that it extends at least 2,5 metres above any working level in the case of piers, abutments and retaining walls and 1,5 metres above any working level in the case of parapets.

29.0 WORK DONE ON OR OUTSIDE OF ROLLING STOCK, INCLUDING LOADING OR UNLOADING

- 29.1 No person may stand, climb or work, whilst on any platform, surface or foothold:
- 29.1.1 higher than the normal unrestricted access way, namely -
 - 29.1.1.1 external walkways on diesel, steam and electric locomotives, steam heat vans, etc. and
 - 29.1.1.2 walkways between coaches and locomotives.
 - 29.1.2 of restricted access ways in terms of the Electrical Safety Instructions namely -
 - 29.1.2.1 the floor level of open wagons
 - 29.1.2.2 external walkways or decks of road-rail vehicles, on-track maintenance machines and material trains.
 - 29.1.3 Unauthorised staff working on these platforms must be directly supervised by duly authorised persons in terms of clause 607.1.3 of the Electrical Safety Instructions. These persons must attend the relevant electrical safety module training. A letter of training must then be issued by an accredited training authority. A Category C Certificate of Authority must be obtained from the

local depot examining officer.

- 29.2 When in the above positions no person may raise his hands or any equipment he is handling above his head.
- 29.3 In cases where the Contractor operates his own rail mounted equipment, he shall arrange for the walkways on this plant to be inspected by the Electrical Officer (Contracts) and approved, before commencement of work.
- 29.4 The handling of long lengths of material such as metal pipes, reinforcing bars, etc should be avoided, but if essential they shall be handled as nearly as possible in a horizontal position below head height.
- 29.5 The Responsible Representative shall warn all persons under his control of the danger of being near "live" high-voltage equipment, and shall ensure that the warning is fully understood.
- 29.6 Where the conditions in clauses 30.1 to 30.4 cannot be observed the Electrical Officer (Contracts), shall be notified. He will arrange for suitable Safety measures to be taken. The Electrical Officer (Contracts), may in his discretion and in appropriate circumstances, arrange for a suitable employee of the Contractor to be specially trained by the network operator and at the Contractor's cost, as an Authorised Person to work closer than 3 metres from "live" overhead conductors and under such conditions as may be imposed by the senior responsible electrical engineer of the network operator.

30.0 USE OF EQUIPMENT

30.1 Measuring Tapes and Devices

- 30.1.1 Measuring tapes may be used near "live" high-voltage equipment provided that no part of any tape or a person's body comes within 3 metres of the "live" equipment.
- 30.1.2 In windy conditions the distance shall be increased to ensure that if the tape should fall it will not be blown nearer than 3 metres from the "live" high-voltage equipment.
- 30.1.3 Special measuring devices longer than 2 metres such as survey sticks and rods may be used if these are of non-conducting material and approved by the responsible Electrical Engineer of the network operator, but these devices must not be used within 3 metres of "live" high-voltage equipment in rainy or wet conditions.
- 30.1.4 The assistance of the Electrical Officer (Contracts) shall be requested when measurements within the limits defined in clauses 31.1.1 to 31.1.3 are required.
- 30.1.5 The restrictions described in 31.1.1 to 31.1.3 do not apply on a bridge deck between permanent parapets nor in other situations where a barrier effectively prevents contact with the "live" high-voltage equipment.

30.2 Portable Ladders

- 30.2.1 Any type of portable ladder longer than 2 metres may only be used near "live" high-voltage equipment under the direct supervision of the Responsible Representative. He shall ensure that the ladder is always used in such a manner that the distance from the base of the ladder to any "live" high-voltage equipment is greater than the fully extended length of the ladder plus 3 metres. Where these conditions cannot be observed, the Electrical Officer (Contracts) shall be advised, and he will arrange for suitable safety measures to be taken.

31.0 CARRYING AND HANDLING MATERIAL AND EQUIPMENT

- 31.1 Pipes, scaffolding, iron sheets, reinforcing bars and other material which exceeds 2 metres in length shall be carried completely below head height near "live" high-voltage equipment. For maximum safety such material should be carried by two or more persons so as to maintain it as nearly as possible in a horizontal position. The utmost care must be taken to ensure that no part of the material comes within 3 metres of any "live" high-voltage equipment.
- 31.2 Long lengths of wire or cable shall never be run out in conditions where a part of a wire or cable can come within 3 metres of any "live" high-voltage equipment unless the Electrical Officer (Contracts) has been advised and has approved appropriate safety precautions.
- 31.3 The presence of overhead power lines shall always be taken account of especially when communications lines or cables or aerial cables, stay wires, etc. are being erected above ground level.

32.0 PRECAUTIONS TO BE TAKEN WHEN ERECTING OR REMOVING POLES, ANTENNAE, TREES ETC.

- 32.1 A pole may be handled for the purpose of erection or removal near high-voltage equipment under the following conditions:

(i) If the distance between the point at which the pole is to be erected or removed and the nearest "live" high-voltage equipment is more than the length of the pole plus 3 metres, the work shall be supervised by the Responsible Representative.

(ii) If the distance described in (i) is less than the length of the pole plus 3 metres, the Electrical Officer (Contracts) shall be consulted to arrange for an Authorised Person to supervise the work and to ensure that the pole is earthed where possible. The pole shall be kept in contact with the point of erection, and adequate precautions shall be taken to prevent contact with "live" high-voltage equipment.

32.2 The cost of supervision by an Authorised Person and the provision of earthing shall, unless otherwise agreed, be borne by the Contractor.

32.3 The provisions of clauses 33.1 and 33.2 shall also apply to the erection or removal of columns, antennae, trees, posts, etc.

33.0 USE OF WATER

33.1 No water shall be used in the form of a jet if it can make contact with any "live" high-voltage equipment or with any person working on such equipment.

34.0 USE OF CONSTRUCTION PLANT

34.1 "Construction plant" entails all types of plant including cranes, piling frames, boring machines, excavators, draglines, dewatering equipment and road vehicles with or without lifting equipment.

34.2 When work is being undertaken in such a position that it is possible for construction plant or its load to come within 3 metres of "live" high-voltage equipment, the Electrical Officer (Contracts) shall be consulted. He will arrange for an Authorised Person to supervise the work and to ensure that the plant is adequately earthed. The Electrical Officer (Contracts) will decide whether further safety measures are necessary.

34.3 The cost of any supervision by an Authorised Person and the provision of earthing shall, unless otherwise agreed, be borne by the Contractor.

34.4 When loads are handled by cranes, non-metallic rope hand lines shall be used, affixed to such loads so as to prevent their swinging and coming within 3 metres of "live" high-voltage equipment.

34.5 Clauses 35.1 to 35.4 shall apply *mutatis mutandis* to the use of maintenance machines of any nature.

35.0 WORK PERFORMED UNDER DEAD CONDITIONS UNDER COVER OF A WORK PERMIT

35.1 If the Responsible Representative finds that the work cannot be done in safety with the high-voltage electrical equipment "live", he shall consult the Electrical Officer (Contracts) who will decide on the action to be taken.

35.2 If a work permit is issued the Responsible Representative shall-

(i) before commencement of work ensure that the limits within which work may be carried out have been explained to him by the Authorised Person who issued the permit to him, and that he fully understands these limits.

(ii) sign portion C of the permit before commencement of work;

(iii) explain to all persons under his control the limits within which work may be carried out, and ensure that they fully understand these limits;

(iv) care for the safety of all persons under his control whilst work is in progress; and

(v) withdraw all personnel under his control from the equipment on completion of the work before he signs portion D of the work permit.

36.0 TRACTION RETURN CIRCUITS IN RAILS

36.1 DANGEROUS CONDITIONS CAN BE CREATED BY REMOVING OR SEVERING ANY BOND.

36.2 Broken rails with an air gap between the ends, and joints at which fishplates are removed under "broken bond" conditions, are potentially lethal. The rails on either side of an air gap between rail ends on electrified lines shall not be touched simultaneously until rendered safe by the network operator personnel.

36.3 The Contractor shall not break any permanent bonds between rails or between rails and any structure. He shall give the Contract Supervisor at least 7 days written notice when removal of such bonds is necessary.

- 36.4 No work on the track which involves interference with the traction return rail circuit either by cutting or removing the rails, or by removal of bonds shall be done unless the Electrical Officer (Contracts) is consulted. He will take such precautions as may be necessary to ensure continuity of the return circuit before permitting the work to be commenced.

37.0 HIGH-VOLTAGE ELECTRICAL EQUIPMENT NOT MAINTAINED AND/OR OPERATED BY THE NETWORK OPERATOR

Where the work is undertaken on or near high-voltage electrical equipment which is not maintained and/or operated by the network operator, the Occupational Health and Safety Act No. 85 of 1993, and Regulations and Instructions, or the Mines Health and Safety Act (Act 29 of 1996), shall apply.

Such equipment includes:-

- (i) Eskom and municipal equipment;
- (ii) The Contractor's own power supplies; and
- (iii) Electrical equipment being installed but not yet taken over from the Contractor.

END

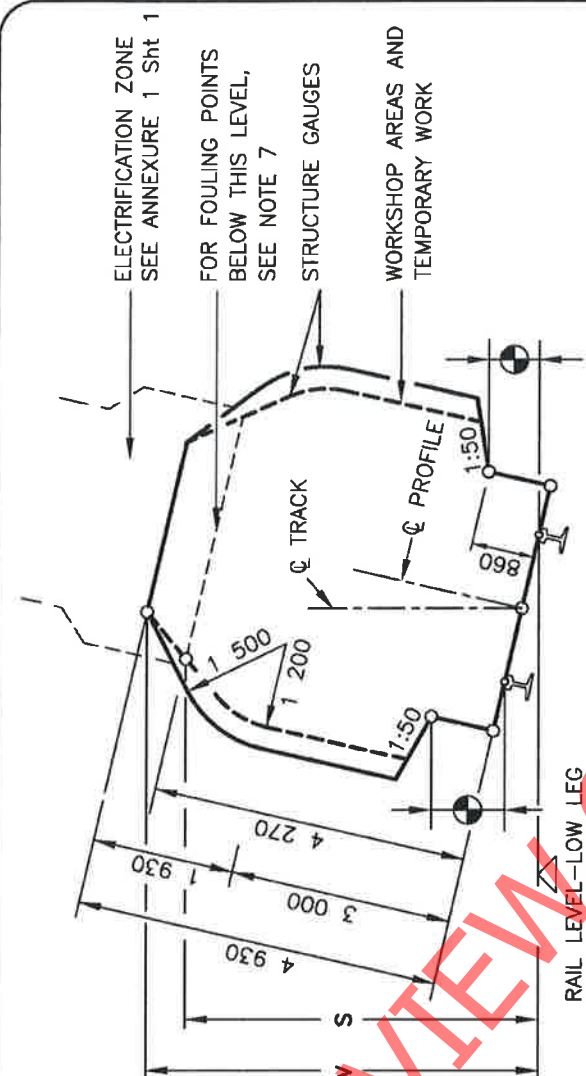
"PREVIEW COPY ONLY"



RADIUS (m)	WITH CANT		NO CANT		WITH CANT	
	H (mm)	L (mm)	H & L		B (mm)	C (mm)
90	2 730	3 090	2 780		1 130	2 100
100	2 700	3 030	2 750		1 140	2 050
120	2 650	2 970	2 700		1 160	2 010
140	2 620	2 920	2 660		1 175	1 990
170	2 590	2 870	2 630		1 190	1 970
200	2 570	2 820	2 600		1 205	1 950
250	2 550	2 790	2 580		1 230	1 920
300	2 540	2 760	2 560		1 250	1 900
350	2 530	2 730	2 540		1 270	1 890
400	2 520	2 710	2 530		1 290	1 875
500	2 510	2 680	2 520		1 320	1 850
600	2 500	2 660	2 510		1 340	1 830
800	2 490	2 620	2 500		1 365	1 790
1 000	2 480	2 600	2 490		1 380	1 760
1 200	2 480	2 580	2 490		1 200	1 730
1 500	2 480	2 550	2 480		1 415	1 700
2 000	2 480	2 500	2 480		1 440	1 660
3 000	2 470	2 470	2 470		1 500	1 600
>5 000	2 460	2 460	2 460		1 600	1 600

REMARKS:

1. H AND B IS THE REQUIRED HORIZONTAL CLEARANCE ON THE OUTSIDE OF THE CURVE BASED ON MINIMUM CANT.
2. L AND C IS THE REQUIRED HORIZONTAL CLEARANCE ON THE INSIDE OF THE CURVE BASED ON MAXIMUM CANT.
3. INTERMEDIATE VALUES MAY BE INTERPOLATED BY THE ENGINEER IN CHARGE.
4. FOR WORKSHOP AREAS AND TEMPORARY WORK, CLEARANCES H AND L MAY BE REDUCED BY 300mm.
5. SEE ANNEXURE 1 SHEET 3 FOR PLATFORM CLEARANCES.
6. ALSO REFER TO REMARKS 4 TO 8 OF ANNEXURE 1 SHEET 2.



LOCATION	RADIUS (mm)	NOT ELECTRIFIED S (mm)	ELECTRIFIED (PRESENT OR FUTURE)	
			3kV & 25kV V (mm)	50kV V (mm)
* BELOW THOSE INDICATED BY ALL AREAS OTHER THAN	100	4 470	5 050	5 400
	300	4 410	5 020	5 370
	600	4 370	5 000	5 350
	1 000	4 350	4 990	5 340
	1 500	4 310	4 960	5 310
	2 000	4 290	4 940	5 290
	>3 000	4 270	4 930	5 280
* OVER OR NEAR POINTS AND CROSSING IF REQUIRED BY ELECTRICAL IRRESPECTIVE OF RADIUS			5 650	6 000

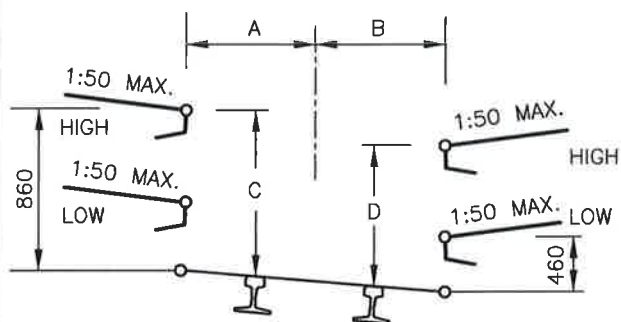
REMARKS:

1. V IS THE REQUIRED VERTICAL CLEARANCE EXCEPT WHERE REDUCED CLEARANCE S APPLIES.
2. S IS THE MINIMUM VERTICAL CLEARANCE FOR STRUCTURES AND TEMPORARY WORK OVER NON-ELECTRIFIED LINES.
3. INTERMEDIATE VALUES MAY BE INTERPOLATED BY THE ENGINEER IN CHARGE.
4. FOR APPLICATION AT CURVES
 - 4.1 APPLY INCREASED CLEARANCES FOR CURVES TO POINTS 3m BEYOND THE ENDS OF THE CIRCULAR CURVE.
 - 4.2 REDUCE CLEARANCES AT A UNIFORM RATE OVER THE REMAINDER OF THE TRANSITION CURVE.
 - 4.3 FOR NON-TRANSITIONED CURVES REDUCE AT A UNIFORM RATE OVER A LENGTH OF 15m ALONG STRAIGHTS.
5. NEW STRUCTURES: SEE BRIDGE CODE.
6. TUNNELS: SEE DRAWING BE 82-35.
7. FOULING POINTS: SEE CLAUSE 8.1.
8. CLEARANCES ARE BASED ON 15m BOGIE CENTRES AND 21.2m VEHICLE BODY LENGTH.
9. SEE ANNEXURE 1 SHEET 3 FOR PLATFORM CLEARANCES.

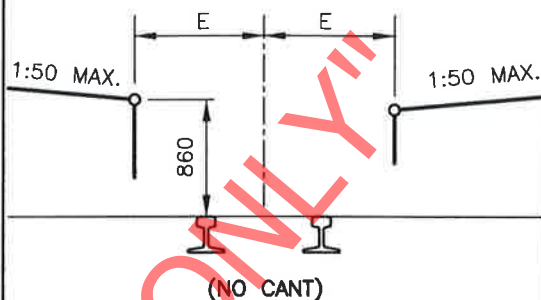
CLEARANCES : PLATFORMS

PLATFORMS : TRACK GAUGE 1 065mm

PASSENGERS



GOODS

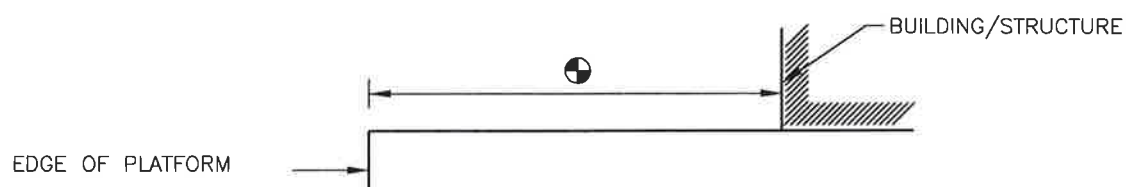


RADIUS (m)	A (mm)	B (mm)	C (mm)	D (mm)	E (mm)
90	1 690	1 820	890	810	1 840
100	1 650	1 790	890	810	1 810
120	1 610	1 740	890	810	1 760
140	1 580	1 700	890	810	1 720
170	1 550	1 660	890	810	1 690
200	1 530	1 630	890	820	1 670
250	1 520	1 600	890	820	1 640
300	1 520	1 580	890	830	1 620
350	1 520	1 560	880	830	1 600
400	1 520	1 550	880	840	1 590
500	1 520	1 540	880	850	1 580
600	1 520	1 530	870	850	1 570
800	1 520	1 520	860	860	1 560
1 200	1 520	1 520	860	860	1 550
2 000	1 520	1 520	860	860	1 540
3 000	1 520	1 520	860	860	1 530
STRAIGHT	1 520	1 520	860	860	1 520

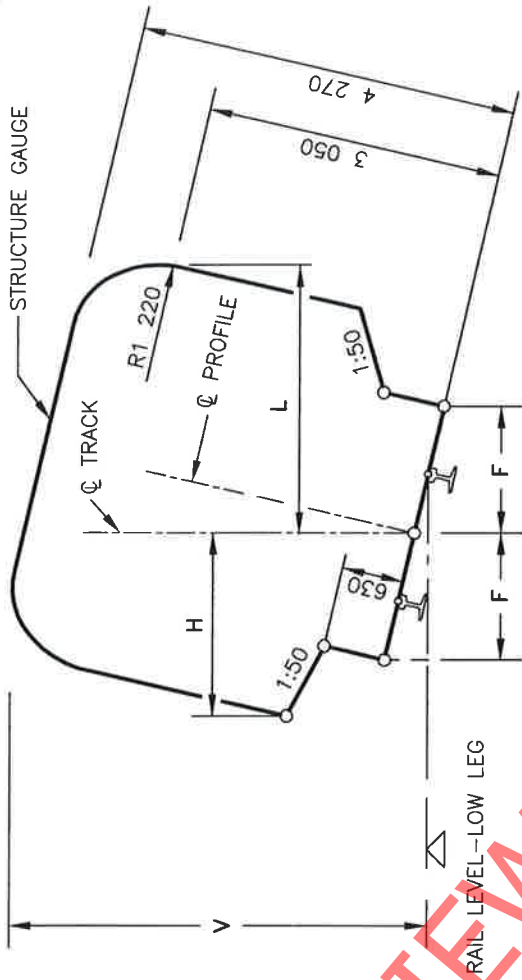
REMARKS:

1. NO CANT TO BE APPLIED EXCEPT WHEN THE GOODS PLATFORM IS ON A RUNNING LINE.
2. INTERMEDIATE VALUES MAY BE INTERPOLATED BY THE ENGINEER IN CHARGE.
3. 8m TO MAIN STATION-BUILDINGS AND 3m TO ALL OTHER STRUCTURES.
4. TOLERANCES : SEE CLAUSE 8.0.10.

STRUCTURES ON PLATFORMS : 1 065mm AND 610mm TRACK GAUGE



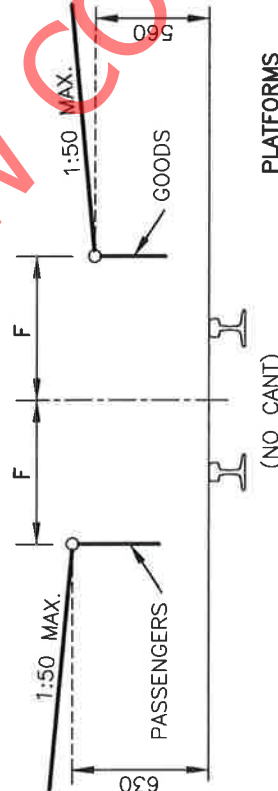
CLEARANCES : 610mm TRACK GAUGE



RADIUS (m)	WITH CANT		NO CANT	V (mm)
	H (mm)	L (mm)		
50	2 370	2 490	2 400	4 320
70	2 310	2 420	2 330	4 310
100	2 260	2 370	2 280	4 310
140	2 220	2 340	2 250	4 310
200	2 200	2 300	2 220	4 300
300	2 190	2 270	2 200	4 300
500	2 180	2 230	2 190	4 290
700	2 170	2 200	2 180	4 270
1 000	2 170	2 170	2 170	4 270
>2 000	2 160	2 160	2 160	4 270

CLEARANCES

RADIUS (m)	F (mm)
50	1 550
60	1 510
80	1 460
100	1 430
120	1 410
140	1 390
170	1 380
200	1 370
250	1 360
300	1 350
600	1 330
1 000	1 320
>2 000	1 320
STRAIGHT	1 310



REMARKS:

1. H IS THE MINIMUM HORIZONTAL CLEARANCE ON THE OUTSIDE OF THE CURVE BASED ON MINIMUM CANT.
2. L IS THE MINIMUM HORIZONTAL CLEARANCE ON THE INSIDE OF THE CURVE BASED ON MAXIMUM CANT.
3. V IS THE MINIMUM VERTICAL CLEARANCE.
4. FOR APPLICATION AT CURVES:
 - 4.1 APPLY INCREASED CLEARANCES FOR CURVES TO POINTS 2m BEYOND THE ENDS OF THE CIRCULAR CURVE.
 - 4.2 REDUCE CLEARANCES AT A UNIFORM RATE OVER THE REMAINDER OF THE TRANSITION CURVE.
 - 4.3 FOR NON-TRANSITIONED CURVES REDUCE AT A UNIFORM RATE OVER A LENGTH OF 18m ALONG STRAIGHTS.
5. INTERMEDIATE VALUES MAY BE INTERPOLATED BY THE ENGINEER IN CHARGE.
6. ALSO REFER TO REMARKS 5, 6 AND 7 OF ANNEXURE 1 SHEET 2.
7. CLEARANCES ARE BASED ON 9 700mm BOGIE CENTRES AND 13 700mm VEHICLE BODY LENGTH.
8. SEE ANNEXURE 1 SHEET 3 FOR STRUCTURES ON PLATFORMS.

TRANSNET



delivering on our commitment *to you*

Suppliers Code of Conduct

"PREVIEW COPY ONLY"



Suppliers Code of Conduct

Transnet aims to achieve the best value for money when buying or selling goods and obtaining services. This, however, must be done in an open and fair manner that supports and drives a competitive economy. Underpinning our process are several acts and policies that any supplier dealing with Transnet must understand and support.

These are:

- » Transnet Procurement Policy - A guide for tenderers;
- » Section 217 of the Constitution - the five pillars of Public PSCM (Procurement and Supply Chain Management): fair, equitable, transparent, competitive and cost effective;
- » The Public Finance Management Act (PFMA);
- » The Broad Based Black Economic Empowerment Act (BBBEE); and
- » The Anti-Corruption Act.

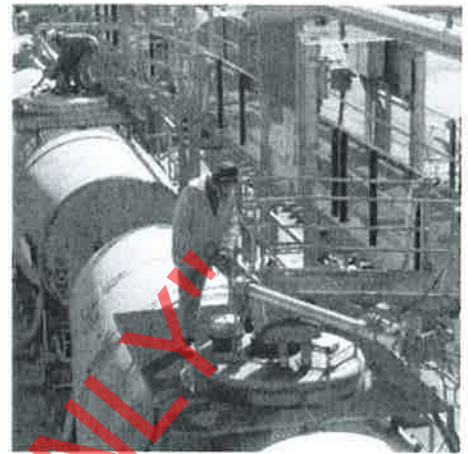
This code of conduct has been compiled to formally apprise Transnet Suppliers of Transnet's expectations regarding behaviour and conduct of its Suppliers.

Prohibition of Bribes, Kickbacks, Unlawful Payments, and Other Corrupt Practices

Transnet is in the process of transforming itself into a self-sustaining State Owned Enterprise, actively competing in the logistics industry. Our aim is to become a world class, profitable, logistics organisation. As such, our transformation is focused on adopting a performance culture and to adopt behaviours that will enable this transformation.

Transnet will not participate in corrupt practices. Therefore, it expects its suppliers to act in a similar manner.

- » Transnet and its employees will follow the laws of this country and keep accurate business records that reflect actual transactions with, and payments to, our suppliers.



- » Employees must not accept or request money or anything of value, directly or indirectly, from suppliers.

Employees may not receive anything that is calculated to:

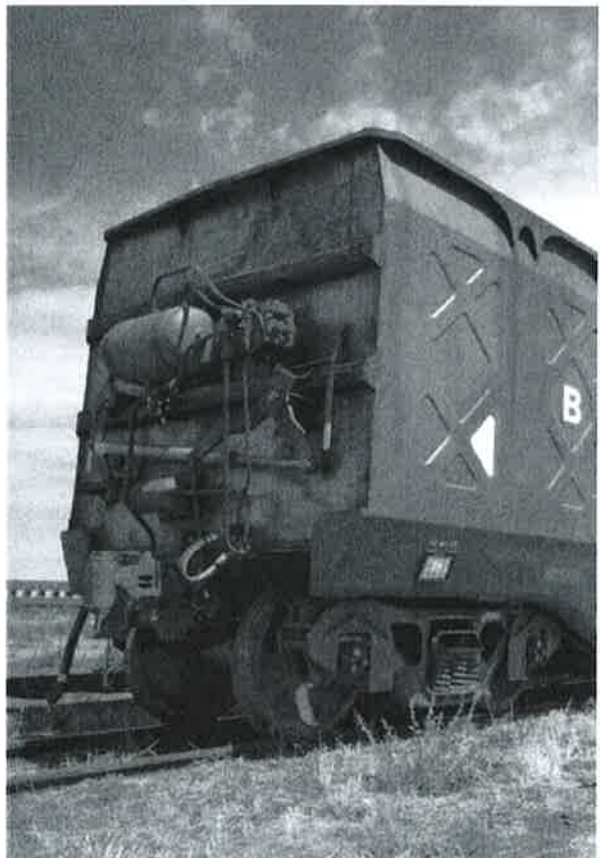
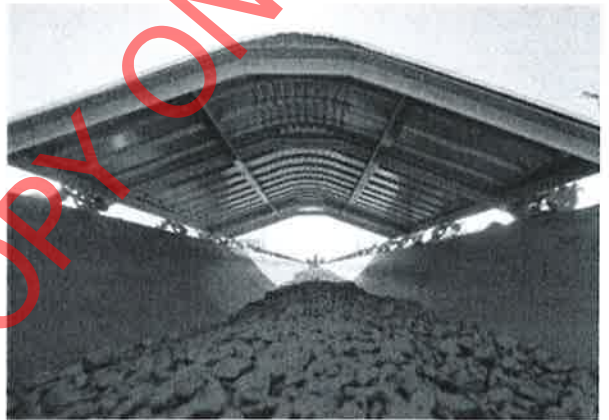
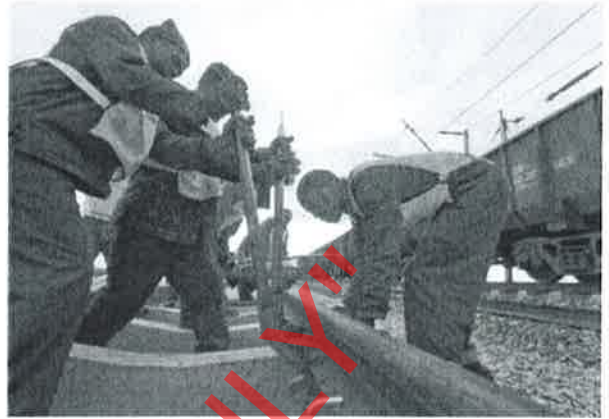
- Illegally influence their judgement or conduct or to influence the outcome of a sourcing activity;
 - Win or retain business or to influence any act or decision of any person involved in sourcing decisions; gain an improper advantage.
- » There may be times when a supplier is confronted with fraudulent or corrupt behaviour of Transnet employees. We expect our suppliers to use our "Tip-offs Anonymous" Hotline to report these acts - 0800 003 056.

Transnet is firmly committed to free and competitive enterprise.

- » Suppliers are expected to comply with all applicable laws and regulations regarding fair competition and antitrust practices
- » Transnet does not engage non-value adding agents or representatives solely for the purpose of increasing BBBEE spend (fronting).

Transnet's relationship with suppliers requires us to clearly define requirements, to exchange information and share mutual benefits.

- » Generally, suppliers have their own business standards and regulations. Although Transnet cannot control the actions of our suppliers, we will not tolerate any illegal activities.



These include, but are not limited to:

- Misrepresentation of their product (origin of manufacture, specifications, intellectual property rights, etc);
 - Collusion;
 - Failure to disclose accurate information required during the sourcing activity (ownership financial situation, BBBEE status, etc.);
 - Corrupt activities listed above; and harassment, intimidation or other aggressive actions towards Transnet employees.
- >> Suppliers must be evaluated and approved before any materials, components, products or services are purchased from them. Rigorous due diligence must be conducted and the supplier is expected to participate in an honest and straight forward manner.
- >> Suppliers must record and report facts accurately, honestly and objectively. Financial records must be accurate in all material respects.

Conflict of Interest

A conflict of interest arises when personal interests or activities influence (or appear to influence) the ability to act in the best interests of Transnet. Examples are:

- >> Doing business with family members.
- >> Having a financial interest in another company in our industry.



**Show that you support good business practice by logging onto
www.transnet-suppliers.net and completing the form.**

This will allow us to confirm that you have received, and agree to, the terms and conditions set out in our Suppliers Code of Conduct.

**TIP-OFFS ANONYMOUS HOTLINE
0800 003 056**