

RFQ / TENDER

Tender No: JW00364

Vendor No: 11001386

BOARD LIST
BOARD LIST
TRANSNET FREIGHT RAIL
PROCUREMENT DEPARTMENT
2000

Purchaser : Joseph Webber
Telephone : 021 9403829
Fax Number: 021 9403883

Please quote reference:
A14/6000606231

Deliver to:

Mr.
Lefera Teisi
Transnet Freight Rail
Saldanha
7395 022 703 3214

Closing Date :25.08.2014
Validity Date :25.10.2014
RFQ NO :6000606231

Prices in South African currency
including the cost of packing and packing
materials for delivery as follows:

A: DIRECT by rail to destination point (Railage a/c)
B: DIRECT by other means to destination point
C: EX OVERSEAS WORKS

Item Qty Material Description

00010 10 DISTRIBUTION KIOSK BOXES

Delivery Date: 25.09.2014

FULL DETAILS OF DESCRIPTION

Supply of Distribution Kiosk Boxes Required At Saldanha

PLEASE SEE ATTACHED DRAWINGS

R..... R..... R.....
Each Each Each

DATE:

SIGNATURE OF TENDERER(S):

CONTACT PERSON:

TEL No:

RFQ / TENDER

Tender No: JW00364 Page
Date : 18.08.2014 2

BOARD LIST
TRANSNET FREIGHT RAIL
PROCUREMENT DEPARTMENT

Prices in South African currency
including the cost of packing and packing
materials for delivery as follows:

A:	DIRECT	B:	DIRECT	C:	EX OVERSEAS
	by rail to		by other		WORKS
	destination		means to		
	point		destination		
	(Railage a/c		point		
)				

Item	Qty	Material	Description
------	-----	----------	-------------

1. Transnet indemnifies itself from any claims which may arise as a result of a Bidder not being able to transmit his / her quote to Transnet for any reason whatsoever before the closing time.
2. Server issues outside of the Transnet electronic environment will not be considered as a reason for acceptance of late RFQ's
3. In the closing details paragraph of the RFQ:- RFQ's submitted via email must be addressed to both: carol.swan@transnet.net ; AND Johanna.kotze@transnet.net - the subject of the email must indicate only the RFQ number and closing date. No other details must appear in the subject column.
4. I/We _____ hereby confirm we have read the specifications and clearly understand the requirements and offer to supply the goods/services at the prices quoted in the Price Schedule below, in accordance with the conditions related thereto.
5. Lastly, restrict the return of email documents to the Pricing Schedule and compulsory returnable documents HOWEVER include the above phrase in yellow in the Quote section 2

Lastly, restrict the return of email documents to the Pricing Schedule and compulsory returnable documents.

DATE: SIGNATURE OF TENDERER(S):

SPECIFICATION

TRANSNET



delivering freight reliably freight rail

A Division of Transnet Limited

INFRASTRUCTURE
SPECIFICATION CONTROL PAGE

DISTRIBUTION KIOSK CONTAINER BOX

Statement of authorization:

There is no SANS specification available for similar material / equipment and as far as can be ascertained no other specification / standard suitably covers Transnet Freight Rail requirements. The specification has been compiled in a manner which shall favour / encourage local manufacture of material / equipment to maximum degree.

Author: Engineer, Infrastructure

L. Teisi

Approved: Maintenance Manager

D.G. Bowers

Date:

31 JULY 2014

This page is for document control purposes only and does not form part of any tender or contract.

"PREVIEW COPY ONLY"



Respondents are required to furnish proof of the above to Transnet. [i.e. a detailed scorecard as stipulated above in respect of Large Enterprises and QSEs, or a certificate in respect of EMEs].

Transnet will accordingly allocate a maximum of **20 [twenty] points** in accordance with the **80/20** preference point system prescribed in the Preferential Procurement Policy Framework Act (PPPFA), Act 5 of 2000 and its Regulations to the Respondent's final score based on an entity's B-BBEE scorecard rating.

N.B. Failure to submit a B-BBEE certificate, which is valid as at the Closing Date of this RFP, will result in a score of zero being allocated for B-BBEE.

2 Evaluation Criteria

Transnet will utilise the following criteria in choosing a Supplier/Service Provider:-

- Weighted evaluation based on 80/20 preference point system:

Transnet will utilise the following formula in its evaluation of Price:

$$PS = 80 \left(1 - \frac{Pt - Pmin}{Pmin} \right)$$

Where:

Ps = Score for the Bid under consideration
 Pt = Price of Bid under consideration
 $Pmin$ = Price of lowest acceptable Bid

- B-BBEE status of company

Preference points will be awarded to a bidder for attaining the B-BBEE status level of contribution in accordance with the table below:

B-BBEE Status Level of Contributor	Number of points (80/20 system)
1	20
2	18
3	16
4	12
5	8
6	6
7	4
8	2
Non-compliant contributor	0



1 Broad-Based Black Economic Empowerment [B-BBEE]

Transnet fully endorses and supports the Government's Broad-Based Black Economic Empowerment Programme and it would therefore prefer to do business with local business enterprises who share these same values. Transnet will accordingly allow a "preference" to companies who provide a B-BBEE Verification Certificate. All procurement transactions will be evaluated accordingly.

1.1 B-BBEE Scorecard and Rating

As prescribed in terms of the Preferential Procurement Policy Framework Act (PPFFA), Act 5 of 2000 and its Regulations, Respondents are to note the following:

- Proposals will be evaluated on price which will be allocated 80 points and preference which will be allocated 20 points, dependent on the value of the Services
- The 80/20 preference point system applies where the acquisition of the Services will be less than R1 000 000.00.
- If the 80/20 preference point system is stipulated and all Bids received exceed R1 000 000.00, the RFP will be cancelled

In compliance with the Government Gazette No 34612, Notice No. 754 dated 23 September 2011, as from 1 October 2011 valid B-BBEE Verification Certificates must be issued by:

- a) Verification Agencies accredited by the South African National Accreditation System [SANAS]; or
- b) Registered Auditors approved by the Independent Regulatory Board of Auditors [IRBA], in accordance with the approval granted by the Department of Trade and Industry.

Enterprises will be rated by such agencies based on the following:

- c) **Large Enterprises** [i.e. annual turnover greater than R35 million]:
 - Rating level based on all seven elements of the B-BBEE scorecard
- d) **Qualifying Small Enterprises – QSE** [i.e. annual turnover between R5 million and R35 million]:
 - Rating based on any four of the elements of the B-BBEE scorecard
- e) **Exempted Micro Enterprises – EME** [i.e. annual turnover less than R5 million]:

In accordance with B-BBEE Codes of Good Practice [Statement 000, Section 4], any enterprise with an annual total revenue of R 5 million or less qualifies as an EME.

- Automatic rating of B-BBEE Level 4 irrespective of race or ownership
- Black ownership greater than 50% or Black Women ownership greater than 50% automatically qualify as B-BBEE Level 3

Sufficient evidence to qualify as an EME would be a certificate (which may be in the form of a letter) from an auditor or accounting officer or a certificate from a Verification Agency accredited by SANAS. The certificate must confirm the company's turnover, black ownership / black female ownership and B-BBEE status level.

SPECIFICATION

TRANSNET



delivering freight *reliably* freight rail

TYPE OF DISTRIBUTION KIOSK BOX

Manufacture of distribution kiosk polyethylene enclosures only without brackets frames and basbars.

Safety of distribution kiosk box shall be in according with SANS 1765.

The kiosk shall be made of polyethylene make type, with two way doors which is both sides must have door, padlockable in each door.

Properties of polyethylene distribution kiosk box

- High rigidity
- Excellent impact strength for the moisture, heat and strong wind
- Excellent toughness to break
- Abrasion resistant
- Excellent toughness padlockable
- Excellent electrical insulator and high resistivity
- Environmentally friendly, warning signs and colourable.

Sizes of distribution kiosk

The following sizes will be utilised:

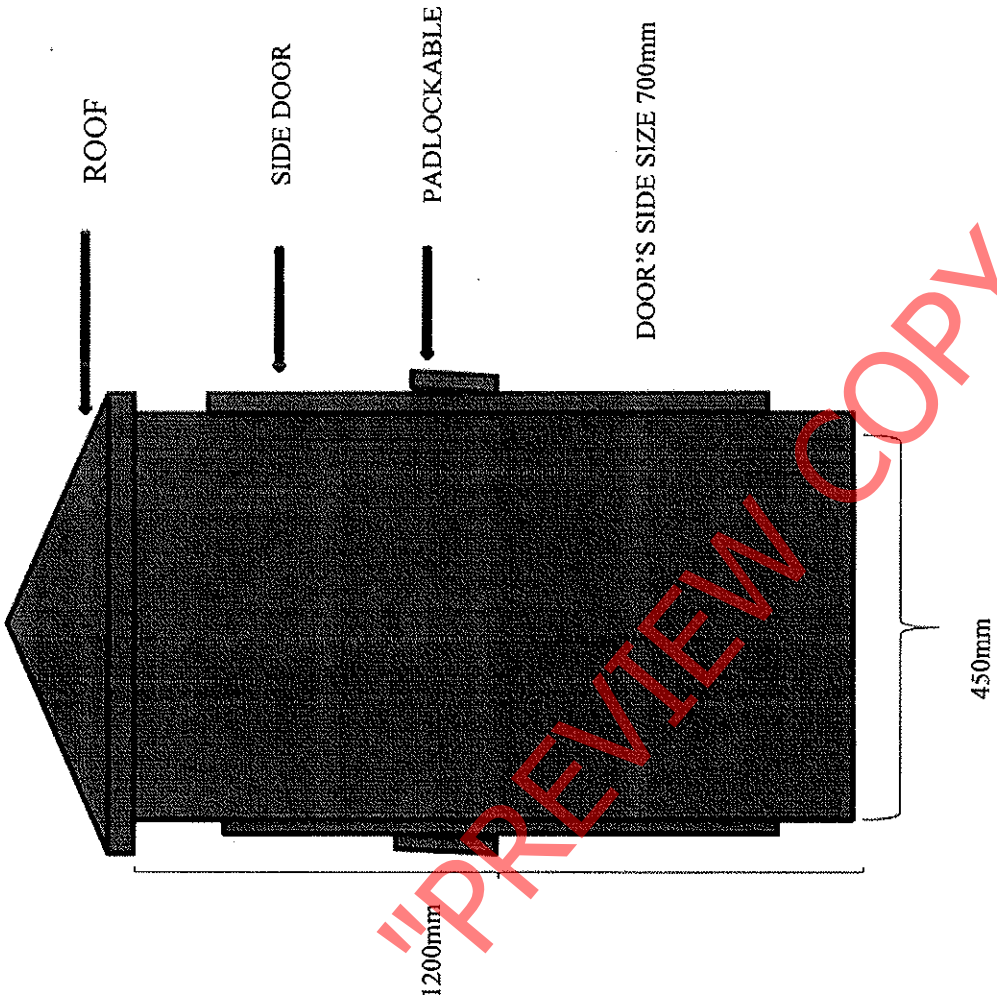
Box size 450mm X 700mm X 1200mm

This specification covers the manufacture of distribution kiosks enclosure for general reticulation and distribution systems in environmental conditions specified for single phase, 230V AC, 50 Hz systems.

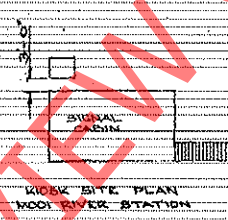
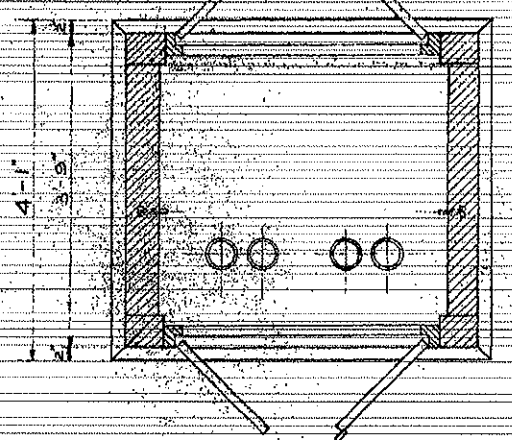
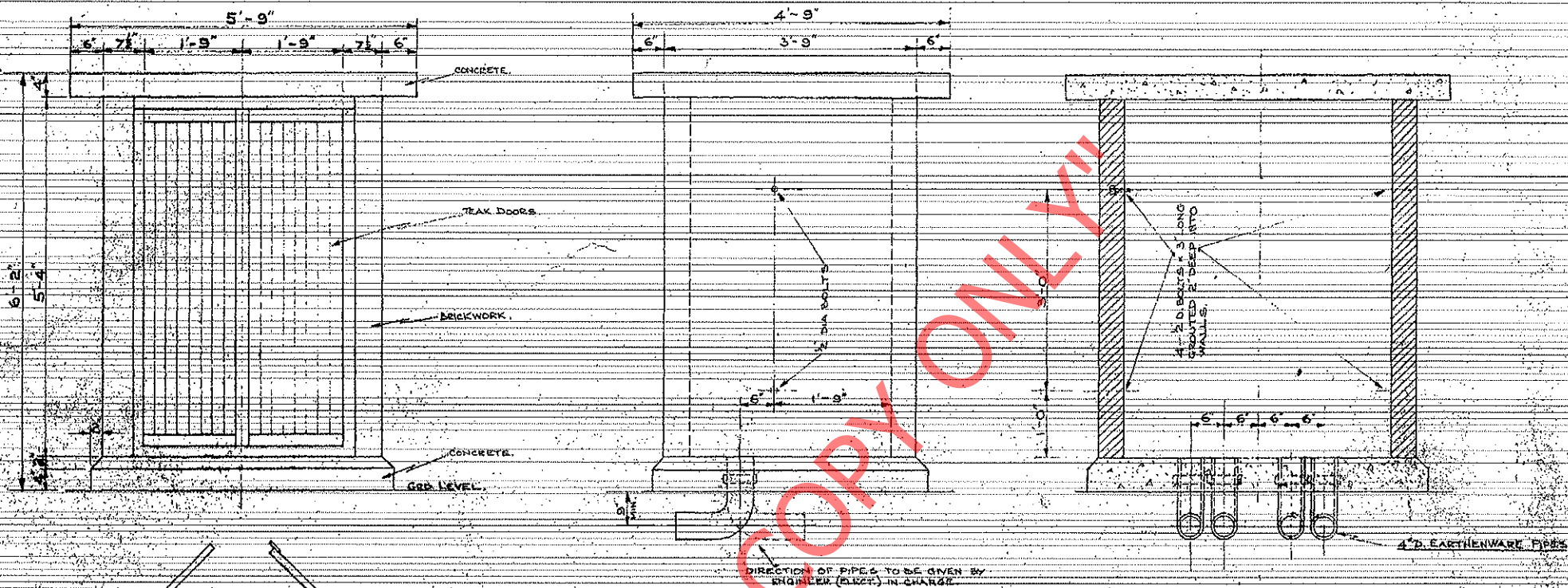
Kiosk shall be weatherproof, to prevent the ingress of water onto the live equipment, the doors entry surrounds shall have a shape, at least 12mm deep, to accommodate the door edge.

SPECIFICATION

LOW VOLTAGE OUTDOOR DISTRIBUTION KIOSK DRAWING



- Both doors shall install with warning signs ww7 which are used to indicate the existence of dangers of electrical shock.



DIRECTION OF PIPES TO BE GIVEN BY ENGINEER (ELECT.) IN CHARGE

"PREVIEW COPY ONLY"

EL & P DISTRIBUTION KIOSK

28/11/2011

Dr. Charles
RESIDENT ENGINEER (ELECT.)

LS 403-R-23-9

E.C.E. SKETCH E.2.D.4.