

TRANSNET FREIGHT RAIL, a division of

TRANSNET SOC LTD

Registration Number 1990/000900/30

[hereinafter referred to as **Transnet**]

REQUEST FOR QUOTATION [RFQ] No. ERAC-WGO-MM31-018732

**FOR THE PROVISION TO PAINT SIGNALLING EQUIPMENT AT LEYBANK, WESKAS,
MYNHOOP AND RR3 UNDER THE CONTROL DEPOT ENGINEER, WITBANK**

SITE BRIEFING DATE: 07 SEPTEMBER 2015
VENUE: STATION BUILDING
SIGNAL BOARDROOM
MAIN STREET
WITBANK STATION
TIME: 10:00

FOR DIRECTIONS CONTACT LESEDI LETHOKO ON 083 260 0080

ISSUE DATE: 31 AUGUST 2015
CLOSING DATE: 10 AUGUST 2015
CLOSING TIME: 10:00
VALIDITY DATE: 30 NOVEMBER 2015

**NB: TENDERERS WITHOUT A VALID TENDER DOCUMENT IN THEIR POSSESSION
WILL NOT BE ALLOWED TO ATTEND THE MEETING**

Section 1

NOTICE TO BIDDERS

Quotations which must be completed as indicated in Section 2 of this RFQ are to be submitted as follows:

METHOD: Submit physically
CLOSING VENUE: Transnet Freight Rail Tender Advice Centre
Inyanda House 1, Ground Floor
21 Wellington Road
Parktown
Johannesburg
2000

1 Responses to RFQ

Responses to this RFQ [**Quotations**] must not include documents or reference relating to any other quotation or proposal. Any additional conditions must be embodied in an accompanying letter.

2 Broad-Based Black Economic Empowerment [B-BBEE]

Transnet fully endorses and supports the Government's Broad-Based Black Economic Empowerment Programme and it would therefore prefer to do business with local business enterprises who share these same values. As described in more detail in the attached B-BBEE Claim Form Transnet will allow a "preference" to companies who provide a valid B-BBEE Verification Certificate.

The value of this bid is estimated to be above R1 000 000 (all applicable taxes included) and therefore the 84/20 system shall be applicable.

Respondents are required to complete Annexure A [the B-BBEE Preference Point Claim Form] and submit it together with proof of their B-BBEE Status as stipulated in the Claim Form in order to obtain preference points for their B-BBEE status.

Note: Failure to submit a valid and original B-BBEE certificate or a certified copy thereof at the Closing Date of this RFQ will result in a score of zero being allocated for B-BBEE.

2.1 B-BBEE Improvement Plan

2.2 Transnet encourages its Suppliers/Service Providers to constantly strive to improve their B-BBEE rating. Whereas Respondents will be allocated points in terms of a preference point system based on its B-BBEE scorecard to be assessed as detailed in paragraph 2.1 above, in addition to such scoring, Transnet also requests that Respondents submit a B-BBEE improvement plan. Respondents are therefore requested to indicate the extent to which they will maintain or improve their B-BBEE status over the contract period. Respondents are requested to submit their B-BBEE Improvement Plan as an additional document with their Proposals by completion of Annexure A appended hereto.

3 Communication

Respondents are warned that a response will be liable for disqualification should any attempt be made by a Respondent either directly or indirectly to canvass any officer(s) or employee of Transnet in respect of this RFQ between the closing date and the date of the award of the business.

A Respondent may, however, before the closing date and time, direct any written enquiries relating to the RFQ to the following Transnet employee:

Name: **Prudence Nkabinde**

Email: prudence.nkabinde@transnet.net

Telephone: **(011) 544-9486**

Respondents may also, at any time **after the closing date of the RFQ**, communicate with the Buyer of the Transnet Freight Rail on any matter relating to its RFQ response:

Name: **Matete Madisha**

Email: matete.madisha@transnet.net

Telephone: **(013) 658 2474**

4 FORMAL BRIEFING

A **compulsory** site briefing will be conducted at Transnet freight Rail on the **07 September 2015; 10h00 at Transnet – Signal Board room, Main Road, Witbank Station** thereafter proceed to physical site viewing. [Respondents must wear safety clothes – Reflector vest and boots]. The briefing session will start punctually at 10h00 and information will not be repeated for the benefit of Respondents arriving late.

4.1 A Certificate of Attendance set out in Section 4 hereto must be completed and submitted with your Proposal as proof of attendance is required for a **compulsory** site meeting and/or RFQ briefing.

4.2 Respondents failing to attend the compulsory RFQ briefing will be disqualified.

Respondents without a valid RFQ document in their possession will not be allowed to attend the site meeting and/or RFQ briefing

5 Legal Compliance

The successful Respondent shall be in full and complete compliance with any and all applicable national and local laws and regulations.

6 Changes to Quotations

Changes by the Respondent to its submission will not be considered after the closing date and time.

7 Pricing

All prices must be quoted in South African Rand on a fixed price basis, excluding VAT.

8 Prices Subject to Confirmation

Prices quoted which are subject to confirmation will not be considered.

9 Binding Offer

Any Quotation furnished pursuant to this Request shall be deemed to be an offer. Any exceptions to this statement must be clearly and specifically indicated.

10 Disclaimers

Transnet is not committed to any course of action as a result of its issuance of this RFQ and/or its receipt of a Quotation in response to it. Please note that Transnet reserves the right to:

- modify the RFQ's goods / service(s) and request Respondents to re-bid on any changes;
- reject any Quotation which does not conform to instructions and specifications which are detailed herein;
- disqualify Quotations submitted after the stated submission deadline;
- not necessarily accept the lowest priced Quotation or an alternative bid;
- reject all Quotations, if it so decides;
- place an order in connection with this Quotation at any time after the RFQ's closing date;
- award only a portion of the proposed goods / service, which are reflected in the scope of this RFQ;
- split the award of the order/s between more than one Supplier/Service Provider should it at Transnet's discretion be more advantageous in terms of, amongst others, cost or developmental considerations ; or
- make no award at all.

Should a contract be awarded on the strength of information furnished by the Respondent, which after conclusion of the contract, is proved to have been incorrect, Transnet reserves the right to cancel the contract.

Transnet reserves the right to award business to the highest scoring bidder/s unless objective criteria justify the award to another bidder.

Transnet reserves the right to conduct Post Tender Negotiations (PTN) with selected Respondents or any number of short-listed Respondents, such PTN to include, at Transnet's discretion, any evaluation criteria listed in the RFQ document.

Should the preferred bidder fail to sign or commence with the contract within a reasonable period after being requested to do so, Transnet reserves the right to award the business to the next highest ranked bidder, provided that he/she is still prepared to provide the required goods at the quoted price.

**Transnet urges its clients, suppliers and the general public to report any fraud or corruption to
TIP-OFFS ANONYMOUS : 0800 003 056**

**RFQ FOR THE PROVISION TO PAINT SIGNALLING EQUIPMENT AT LEYBANK, WESKAS,
MYNHOOP AND RR3 UNDER THE CONTROL DEPOT ENGINEER, WITBANK**

SITE BRIEFING DATE: 07 SEPTEMBER 2015

**VENUE: TRANSNET – SIGNAL BOARDROOM, MAIN L ROAD
WITBANK STATION**

TIME: 10:00

CLOSING DATE & TIME: 10 SEPTEMBER 2015 AT 10:00

**CLOSING VENUE: TRANSNET FREIGHT RAIL TENDER ADVICE CENTRE, INYANDA HOUSE 1,
GROUND FLOOR, 21 WELLINGTON ROAD, PARKTOWN, JOHANNESBURG 2000**

VALIDITY PERIOD: 90 DAYS

SECTION 2

EVALUATION CRITERIA AND RETURNABLE DOCUMENTS

11 Evaluation Criteria

Transnet will utilise the following criteria [not necessarily in this order] in choosing a Supplier/Service Provider, if so required:

Criterion/Criteria	Explanation
Administrative responsiveness	<p>Completeness of response and returnable documents</p> <p>Verify the validity of returnable documents</p>
Substantive responsiveness	<ul style="list-style-type: none"> Qualification – OHTE C-Green Certificate Clause by clause compliance to specification <p>(Failure to submit the above requirements, tender will not be evaluated to next stage)</p>
Functionality Threshold	<p>Prequalification criteria, if any, must be met and whether the Bid materially complies with the scope and/or specification given.</p> <p>Respondents are to note that functionality is included as a technical threshold with a prescribed minimum percentage of 70% must be obtained in order to advance to next stage 3.</p> <ul style="list-style-type: none"> Health/Safety plan and Environmental Plan - 25% Fit for purposes (List of chemical for intended – 25% Relevant experience to the project – 25% Delivery period -25%

Final weighted evaluation based on 80/20 preference point	<ul style="list-style-type: none"> Pricing – 80 points B-BBEE status of company – 20 points Preference points will be awarded to a bidder for attaining the B-BBEE status level of contribution in accordance with the table indicated in Annexure A: B-BBEE Claim Form.
--	--

12 Validity Period

Transnet desires a validity period of 90 [ninety] Business Days from the closing date of this RFQ.

This RFQ is valid until **30 November 2015**.

13 Disclosure of Prices Quoted

Respondents must indicate here whether Transnet may disclose their quoted prices and conditions to other Respondents:

YES ☐ NO ☐

14 Returnable Documents

Returnable Documents means all the documents, Sections and Annexures, as listed in the tables below.

All Returnable Sections, as indicated in the header and footer of the relevant pages, must be signed, stamped and dated by the Respondent.

- a) Respondents are required to submit with their Quotations the **mandatory Returnable Documents**, as detailed below.

Failure to provide all these Mandatory Returnable Documents at the Closing Date and time of this RFQ will result in a Respondent's disqualification. Respondents are therefore urged to ensure that all these Documents are returned with their Quotations.

Please confirm submission of these mandatory Returnable Documents by so indicating [Yes or No] in the tables below:

Mandatory Returnable Documents	Submitted [Yes or No]
SECTION 4 – Price Schedules	
- Qualification – OHTE C-Green Certificate	
- Clause by clause compliance to specification	

- b) In addition to the requirements of section (a) above, Respondents are further required to submit with their Quotations the following **essential Returnable Documents** as detailed below.

Failure to provide all these Returnable Documents may result in a Respondent's disqualification. Respondents are therefore urged to ensure that all these documents are returned with their Quotations.

Essential Returnable Documents	Submitted [Yes or No]
SECTION 2 : Evaluation criteria and list of returnable documents	
- SECTION 4 : RFQ Declaration and Breach of Law Form	
- Valid and original, or a Certified copy, of your entity's B-BBEE Verification Certification as per the requirements stipulated in Annexure A: B-BBEE Claims Form Note: failure to provide these required documents at the closing date and time of the RFQ will result in an automatic score of zero being allocated for preference	
- Original valid Tax Clearance Certificate [Consortia / Joint Ventures must submit a separate Tax Clearance Certificate for each party]	
- Letter of Good Standing from Department of Labour	
- Delivery lead time (how long it will take to complete the project)	

CONTINUED VALIDITY OF RETURNABLE DOCUMENTS

The successful Respondent will be required to ensure the validity of all returnable documents, including but not limited to its Tax Clearance Certificate and valid B-BBEE Verification Certificate, for the duration of any contract emanating from this RFQ. Should the Respondent be awarded the contract [the Agreement] and fail to present Transnet with such renewals as and when they become due, Transnet shall be entitled, in addition to any other rights and remedies that it may have in terms of the eventual Agreement, to terminate such Agreement forthwith without any liability and without prejudice to any claims which Transnet may have for damages against the Respondent.

Respondent's Signature

Date & Company Stamp

SECTION 3
QUOTATION FORM

I/We _____
hereby offer to supply the goods/services at the prices quoted in the Price Schedule below, in accordance with the conditions related thereto.

I/We agree to be bound by those terms and conditions in:

- the Standard RFQ Terms and Conditions for the Supply of Goods or Services to Transnet; and
- any other standard or special conditions mentioned and/or embodied in this Request for Quotation.

I/We accept that unless Transnet should otherwise decide and so inform me/us, this Quotation [and, if any, its covering letter and any subsequent exchange of correspondence] together with Transnet's acceptance thereof shall constitute a binding contract between Transnet and me/us.

I/We further agree that if, after I/we have been notified of the acceptance of my/our Quotation, I/we fail to deliver the said goods/service/s within the delivery lead-time quoted, Transnet may, without prejudice to any other legal remedy which it may have, cancel the order and recover from me/us any expenses incurred by Transnet in calling for Quotations and/or having to accept any less favourable offer.

"PREVIEW COPY ONLY"

Respondent's Signature

Date & Company Stamp

A1. SCOPE OF WORK**DESCRIPTION OF WORK**

This specification covers Transnet Freight Rail's requirements for the painting of Signalling Equipment. The work must be done as specified and shall be completed in all respects.

1. SURFACE PREPARATION AND COATING

It should be noted that no coating should be applied without adequate surface preparation. All loose paint, loose rust and any thick corrosion scale must be removed. Cleanliness and adequate preparation are however essential.

a. Surface Preparation

All rusted or previously painted surfaces should be prepared as follows.

- 1) Remove all obvious large grease spots mechanically (i.e. to avoid spreading the grease with solvents).
- 2) Wire brush to remove all loose rust or flaking paint.
- 3) Where excessive corrosion has caused a thick scale, mechanically remove scale or use power tools (e.g. angle grinder) to remove the scale in accordance with ISO 8501-1:1988 to produce a St 2 surface finish.
- 4) Feather all raised edges produced by surface preparation to create a smooth surface. Blow off all dust.
 - a. **Note: Where extremely severe rusting has become widespread, use abrasive blasting.**
- 5) Degrease the entire surface with a water soluble degreasing agent to remove all contaminants and oils.
- 6) Wash the entire surface down with potable water.
- 7) Allow to dry thoroughly.
- 8) Test for water break free surface.
- 9) Repeat degreasing if water break free test is not successful.

b. Surface Preparation

For new galvanised steel

- 1) Remove all obvious large grease spots (i.e. to avoid spreading the grease with solvents).
- 2) Degrease the entire surface with a water soluble degreasing agent to remove all contaminants and oils.
- 3) Wash the entire surface down with potable water.
- 4) Allow to dry thoroughly.
- 5) Test for water break free surface.
- 6) Repeat degreasing if water break free test is not successful.

After preparation has been completed, the contractor needs to provide the technical officer with a written confirmation which states that the preparation has been completed, in order for the technical officer to go out and inspect the work done.

c. Paint Application

Wherever abrasive blasting was used the first coat must be applied within 4 hours of blasting. When left overnight it must be sweep-blasted the next day before coating.

- 1) First coating should be applied on the same day as the degreasing.
- 2) New galvanized surfaces must be primed with Adhesion Primer (3.1) before the Anti-corrosion Paint (3.2) is applied.
- 3) When the paint is applied by spraying a stripe coat by brush must first be applied to all edges and sharp corners before the full coat is applied.
- 4) Apply the Adhesion Primer at a wet film thickness (wft) of not more than 80 microns. The dry film thickness (dft) must be below 35 microns.
- 5) Apply the Anti-corrosion Paint at a wft of 300 microns, 175 microns dft.
- 6) Apply the Matt-Black Top Coat at a wft of 100 microns, 40 microns dft.
- 7) Apply the Aluminium Top Coat at a wft of 200 microns, 100 microns dft.
- 8) Apply the Gloss Top Coat at a wft of 125 microns, 50 microns dft.

d. Paint Supplier Requirements:

- 1) All coatings forming a coating system must be from one paint manufacturer to ensure coating compatibility.
- 2) The paint manufacturer's data sheets must be followed.
- 3) The dry film thickness (dft) of the coating, as specified, is important. The manufacturer's dft must be achieved, even if this requires multiple coats because of the method of application.
- 4) No deviation from the manufacturer's data sheets is allowed without written instructions.

2.2 SPECIFIC DESCRIPTION OF WORK ON SIGNALLING EQUIPMENT (for previously painted equipment.)

Painting: Signal Targets

Coat	Material	Consumption
First Coat	Anti-corrosion Paint (grey) (3.2)	400grams per square metre
Top Coat (Front Part)	Top Coat Matt Black Coat (3.3)	100 ml per square metre
Top Coat (Back Part)	Aluminium Top Coat (3.4)	200 ml per square metre

Total dft = 225 micron front part

Total dft = 275 micron back part

Signal plate numbers and arrows shall be removed when painting and returned back when the paint has dried. Signal lenses shall be covered when sandblasting and when painting.

back when the paint

Painting: Signal Poles, Crank Handle Pole, Signal Back Plates, Apparatus Cases, Transformer Boxes and 440V Boxes

Coat	Material	Consumption
First Coat	Anti-corrosion Paint (black)	400gram per square metre
Top Coat	Top Coat Aluminium	200ml per square metre

Total dft = 275 microns minimum

Painting: Signal Base Plate

Coat	Material	Consumption
First Coat	Anti-corrosion Paint (grey colour)	400gram per square metre
Second Coat	Anti-corrosion Paint (black colour)	400gram per square metre

Total dft = 350 microns minimum

Painting: Signal Ladders and Points Machines, Points lids, Points Junction Box

Coat	Material	Consumption
First Coat	Anti-corrosion Paint (grey colour)	400gram per square metre
Top Coat	Anti-corrosion Paint (black colour)	400gram per square metre

Total dft = 350 microns minimum

- When ladders are identified to be seriously/ badly rusted, they should be noted and reported to the Transnet's Technical officer.
- When painting points machines and junction boxes, lids shall be removed and then put back after paint has dried.
- Numbering of points shall be stencilled white on the point's machine lids with 150mm stencil using white Gloss Top Coat 3.5.
Junction box number shall be stencilled on the junction box body with 50mm stencil using white Gloss Top Coat 3.5.

Painting: Crank Handle Box

Coat	Material	Consumption
First Coat	Anti-corrosion Paint (grey)	400grams per square metre
Top Coat	Anti-corrosion Paint (black)	400grams per square metre

Total dft = 350 microns minimum

- Crank Handle Box shall be stencilled "Crank Handle Sign" with white Gloss Top Coat on the lid according to 3.5.

Painting: Jeumont Track Side Boxes

Coat	Material	Consumption
First Coat	Anti-corrosion Paint (grey) 3.2	400grams per square metre
Top Coat	Gloss Top Coat (yellow) 3.5.	5 square metre per litre

Total dft = 225 microns

The track numbers shall be stencilled black according to 3.5 with 75 mm stencil.

Apparatus Cases – For the apparatus case that has 4 doors, numbering shall be stencilled black on both sides on 1 door according to 3.5 with a 100mm stencil. As for apparatus cases with two doors, numbers shall be stencilled on both doors according to 3.5. Apparatus case legs should be painted black according to 3.5. Put sticking foam fill on the doors of apparatus case edges: 3mm on the back end of the door and 6mm on the front end of the doors.

Track Circuit Numbering on the Rails - Track circuit numbers shall be painted on the outer side of rails, closer to where the track cables are connected, for all Jeumont and ML track circuits, piece of surface shall be painted black (length 300mm breadth 90mm) according to 3.5, and then the track circuit number shall be stencilled on top with a white paint using a 75mm stencil according to 3.5. ML Track circuits on top of the silos shall be painted (100mm width and 400mm length) black band according to 3.5, and the numbering shall be stencilled with 75mm stencil with white according to 3.5.

Locks – All locks shall not be painted. When painting equipment, locks shall be removed and put back after the paint has dried.

2.3 SPECIFIC DESCRIPTION OF WORK ON SIGNALLING EQUIPMENT (for all new galvanised steel.)

NOTE: New hot dipped galvanised surfaces must first be primed with Adhesion Primer 3.1.

Coat	Material	Consumption
Adhesion Primer	Primer	100ml per square metre
Followed by steps in 2.2 (a)		

3. PAINT REQUIREMENTS – (Specifications for the paint to be used.)3.1 Adhesion Primer –

Intended as a priming coat for new hot dipped galvanized surfaces, smooth stainless steel and smooth non metallic surfaces, as well as a shop primer for abrasive blasted mild steel.

Requirements

: All of these requirements must be met before the primer can be approved.

Features	: The primer shall be one-component water borne universal adhesion primer for metals and non metal surfaces.
Application	: It shall be suitable for brush, roller, spray or dip application.
Application Conditions	: Surface temperature : >5°C. Relative Humidity: Below 80%
Drying Time	Touch : Within 1 hour (at 23±2 °C and 50±5 % RH).
Handling	: Within 4 hours
Over Coating	: After 16 hours
Dry Film Thickness	: Not more than 40 microns
VOC content	: 40g/ litre maximum.
Anti-corrosion	: No flash rust must develop when the primer is applied to mild steel surfaces.
Adhesion	: When applied to degreased, water-break-free, hot dipped galvanized surfaces and tested after 16 hours according to ISO 2409: 1992, the dry film must have an adhesion classification of 0.
Cleaner / Thinner	: The wet paint must be cleanable with water.

3.2 Anti-Corrosion Paint — Intended as an anti-corrosion coating for mild steel and hot dipped galvanized steel signalling equipment exposed to a corrosive environment.

Requirements	: All of these requirements must be met before the paint can be approved.
Features	: It shall be a water borne, one component, high build, anti-corrosion paint for metal. It shall be suitable as primer for new steel as well as a top coat for primed or previously coated steel and weathered galvanized surfaces.
Application	: It shall be suitable for brush, roller or airless spray application at a minimum wet film thickness of 300 microns without sagging from vertical surfaces.
Application Conditions	: Surface temperature: >5°C Relative Humidity: Below 80%
Drying Time	: Touch: Within 3 hours at 23±2 °C and 50±5 %
Re-coatable	: After: 4 hours maximum
Dry Film Thickness	: 175 microns minimum per coat.
Corrosion Resistance	: A dry film of 350 microns applied to abrasive blasted mild steel and exposed to 100 hours cyclic ageing using 4 hours ultra-violet radiation at 60°C and 4 hours condensation at 40°C according to ISO 4892 followed by exposure to neutral salt fog according to ISO 7253: 1996 for 1000 hours the degree of rusting, must be less than Ri 1 when assessed in accordance with ISO 4628-3 and any corrosion from the scratch shall not extend beyond 1mm.
Adhesion	: When applied to degreased, weathered hot dipped galvanizing and to sound old paint and mild steel cleaned to Sa 2 or St 2 standards and tested according to ISO 2409: 2007, the dry film must have an adhesion classification of 0.
Humidity Resistance	: A dry film of 350 microns applied to abrasive blasted mild steel and exposed to water condensation according to ISO6270 for 480 hours must have no

defect when blistering, rusting, cracking and flaking are assessed in accordance with ISO 4628-2 to -5.

3.3 Matt-Black Top Coat: - Intended as a non-reflective matt black finish for signal target front surfaces.

Requirements : All these requirements must be met before the paint can be approved.

Features : Water borne one component matt black paint.

Application : Brush, roller or airless spray at a minimum wet film thickness of 100 microns without sagging.

Application conditions : Surface temperature: >5°C

Relative Humidity : Below 80%

Drying time : Touch: Within 1 hour
Dry to handle: after 4 hours maximum

Dry film thickness : 40 microns per coat.

Gloss (85° geometry) : Below 10

Reflectance : Below 5 %

UV resistance : No fading, chalking, colour change, cracking or other defects after 500 hours exposure to 4 hours cyclic ultra violet radiation at 60°C and 4 hours condensation at 40°C according to ISO 4892 and the reflectance must be below 5%

3.4 Aluminium Top Coat: - Intended as a final coat to the back of signal targets and to signal poles and apparatus cases that need an aluminium finish.

Requirements : All these requirements must be met before the paint can be approved.

Feature : Water borne one component, high build, elastic paint with aluminium finish for metal, fibre-cement and concrete surfaces.

Application : Brush or roller at a wet film thickness of 300 microns without sagging from vertical surfaces.

Application Conditions : Surface temperature : >5°C

Relative Humidity: Below 80%

Drying Time : Touch: Within 3 hours
Dry to handle: 6 hours

Dry Film Thickness : 180 microns per coat.

UV Resistance : No fading, chalking, colour change, cracking or other defects after 1000 hours exposure to 4 hours cyclic ultra violet radiation at 60°C and 4 hours condensation at 40°C according to ISO 4892.

3.5 Gloss Top Coat: - Intended as a bright coloured gloss finish for colour coding and stenciling of signal equipment.

Requirements : All these performance requirements must be met before the paint can be approved.

Features	: Water borne one component smooth semi-gloss paint in white, yellow and black colours.
Compatibility	: The paint must be compatible with and adhere well to the Anti-corrosion Paint and Aluminium Top Coat
Application	: Brush, roller or airless spray at a minimum wet film thickness of 125 microns without sagging.
Application conditions	: Surface temperature: >5°C to 30°C Relative Humidity: Below 80%
Drying time	: Touch: Within 2 hours at 70% RH Dry to handle: after 4 hours maximum
Dry film thickness	: 50 microns per coat.
Gloss (60° geometry)	: Above 80 %
VOC content	: Below 4,5 %
Film elongation at break	> 150%
UV resistance	: No fading, chalking, colour change, cracking or other defects after 500 hours exposure to 4 hours cyclic ultra violet radiation at 60°C and 4 hours condensation at 40°C according to ISO 4892 and the 60° geometry gloss must be above 65%

NOTE: ISO's referred to in the specifications listed below will be made available upon request.

1. ISO 8501
2. ISO 4892
3. ISO 7253
4. ISO 4628
5. ISO 2409
6. ISO 6270

4. WORK TO BE PERFORMED BY TRANSNET

- Transnet shall provide two employees to warn workers of oncoming trains.
- Transnet shall train the contractor to paint the signals according to specifications.

5. RESPONSIBILITIES OF CONTRACTOR

- The contractor shall supply his own paint, thinners and brushes as specified by Transnet and all necessary tools and machines required.
- The contractor shall make his own arrangements for accommodation, food and transport.
- The contractor shall use a ladder with a height of not more than 5.0 meters. Ladders used shall be manufactured of a non – conductive material.
- When standing on the ladder the tip of the hand or anything carried in the hand shall not go beyond 0.5 meters high up from the signal post.
- The contractor shall stay clear of electrical wires.
- The contractor shall exercise care when using paint; any wastage must be prevented to eliminate contamination.
- No other paint other than that specified by Transnet may be used, unless specified in writing.

6. SAFETY

- Contractor shall conduct safety talks every time before working, and also conduct random alco-blow tests.
- Contractor shall abide to all safety rules of TFR while they are within TFR premises.
- While working on heights higher than 2m wear the safety harness.
- The contractor's employees must be aware of trains at all times while painting.
- Contractor shall provide themselves with appropriate PPE to perform the work safely.
- Safety file shall always accompany the contractor whenever they are on site.
- First aid kit shall always accompany the contractor whenever they are on site.
- The contractor with his whole team will attend a safety induction session before the commencement of any work.
- Before any work commence the condition of tools, machinery and Personal Protective Equipment will be approved and then checked on a regular basis by any employee from Transnet Freight Rail.

7. SUPERVISION

The contractor shall appoint competent personnel to supervise the team for the duration of the contract.

8. SITE MEETING

The contractor shall attend site meetings when convened by the Technical Officer. Such meetings will be for the purpose of discussing progress, delays, materials, conditions, problems and co-ordination of site activities. The meetings will be chaired by the Technical Officer and the proceedings shall be minuted.

9. SITE BOOKS

The contractor shall provide itself and have the A4 carbon copy books with detachable numbered sheets in triplicate. This book shall be available at all times at the workplace, and it will be used as:

- (I) Site instruction book for receiving and recording instructions issued by the Technical Officer. All instructions recorded shall be signed by the technical Officer and immediately acknowledged by the counter signature of the contractor or his agent.
- (II) Daily diary/ record book with a page per day for recording all events affecting the progress of the works; breakdowns, delays, work done during the day etc. Entries shall be made by the contractor daily. Those days on which no events take place must be ruled out and "NIL" entered.

10. MAINTENANCE PERIOD

10% of the total amount of the contract value will be held back until the maintenance period of 6 months has elapsed.

During this period the contractor must repair all visible paint defects, such as paint peeling, skips and misses excessive runs, rust spots, incorrect paint systems, etc.

11. PENALTY CLAUSE

Quality inspection will be done during and when the work is done, and any substandard identified will be repaired on the contractor's costs.

12. APPENDIX A – GLOSSARY OF TERMS

Data Sheets – Data sheets provides essential information on all the parameters affecting that paint, for example over-coating times, mixing ratios, temperature and humidity restraints, type of thinners etc. No paint job should be tackled without this information to hand.

DFT – Dry film thickness – the actual thickness of the coating once it has dried according to the manufacturers specifications. The thickness is usually expressed in microns.

Degreaser – A chemical solution for removal of grease.

Feathering – To taper sharp edges.

Flaking – Disintegration in small pieces or flakes.

Mill Scale – Oxide layer formed on steel by hot rolling.

Potable Water – Clean water that is suitable for drinking.

Scale – Laminar rust

Substrate – Surface to be painted.

Water Break Free – When a drop of water is placed on the surface it spreads out wetting the surface, if the surface still has oil or grease present, the drop will form a discrete globule.

WFT – Wet Film Thickness – The thickness of the paint layer at the time of application.

St 2 – Thorough hand and power tool cleaning.

Sa2 – Thorough blast cleaning.

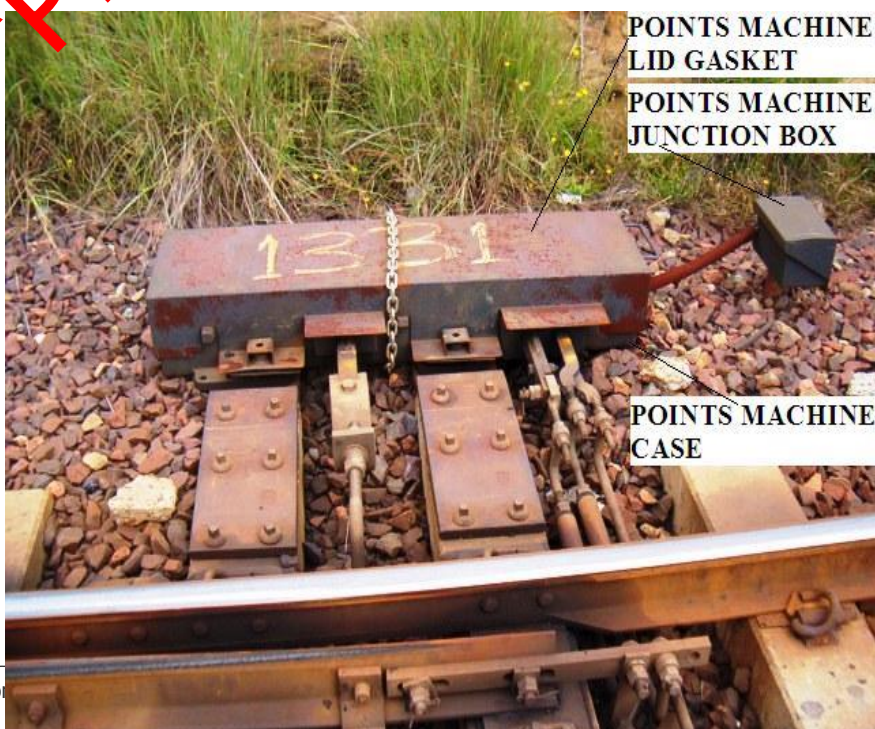
Ri 1 – is the means to evaluate the amount of rust on a surface area. In this case Ri 1 means that the surface area is 0.05% rusted.

13. APPENDIX B - ATTACHMENTS/ PICTURES13.1 Signals13.2 Gantry Signal13.3 Jeumont Track Side



13.4 Apparatus Case

13.5 Points





13.5 Crank Handle Box



"PREVIEW COPY ONLY"

SHEQ FILE**INDEX****1. Contractor SHEQ Policy Statement****2. SHE Management Structure**

- 2.1 Subordinate Construction Work Supervisor (Construction Regulation 6)
- 2.2 Construction Safety Officer (Construction Regulation 6(7))
- 2.3 List of Contractors already appointed - List to be revised at least monthly
- 2.4 Health and Safety Representative (Section 17 of OHS Act)
- 2.5 Scaffold Inspector (Construction Regulation 8)
- 2.6 Portable Fire Equipment Inspector

3. SHE Organisation

- 3.1 Health and Safety Committee
- 3.2 Composition
- 3.3 Frequency of Meetings
- 3.4 Minutes of meeting

4. List of Contractor Employees**5. Project Management**

- 5.1 Notification of Construction Work (Construction Regulation 3, Annexure A)
- 5.2 OHS Act Green Certificate
- 5.3 SHEQ Plan Review
- 5.4 Agreement with Mandatories (Section 37(2) of OHS Act)
- 5.5 Appointments of Sub-Contractor
- 5.6 Site Organisation
 - 5.6.1 Assignment of Duties
 - 5.6.2 Construction Work Supervisor (Construction Regulation 6)
 - 5.6.3 Subordinate Construction Work Supervisor (Construction Regulation 6)
 - 5.6.4 Construction Safety Officer (Construction Regulation 6(7))
 - 5.6.5 List of subcontractors already appointed - List to be revised at least monthly
 - 5.6.6 Health and Safety Representative (Section 17 of OHS Act)
 - 5.6.7 Portable Fire Equipment Inspector

6. Incident Management

- 6.1 Health, Safety and Environmental Performance Statistics
- 6.2 Incidents and or injuries
 - 6.2.1 Reporting
 - 6.2.2 Recording
 - 6.2.3 Investigation
 - 6.2.4 Medical Surveillance and certificate of fitness
 - 6.2.5 Occupational Disease

7. Audits

- 7.1 Legal Compliance Audits
 - 71.1 Audit Report
 - 71.2 Frequency of Audits
 - 71.3 Findings and Analysis
 - 71.4 Corrective Action

8. Substance Abuse Testing

- 8.1 Proof of testing

9. Logbooks and Registers

- 9.1 Electric Equipment / Tools Register – Portable
- 9.2 Fall Protection Plan Checklist
- 9.3 Fire fighting appliance Register – Portable
- 9.4 Personal Protective Equipment and Clothing
- 9.5 Scaffold Register
- 9.6 Schedule of Plant (E4D)
- 9.7 Lifting Equipment Register
- 9.8 Other

10. Risk Management

- 10.1 Task descriptions
- 10.2 Risk Identification, Analysis, Mitigating Steps, Monitoring Steps and Review Plan
- 10.3 Risk Assessment (Construction Regulation 7)
- 10.4 Occupational Hygiene Surveys e.g Noise, Dust etc

11. Education and Training

- 11.1 Induction training (Construction Regulation 7(9))
- 11.2 Site Specific Training
- 11.3 Certificates of Competence e.g operator licences, welding certificates, etc
- 11.4 First Aid training and Equipment

12. Emergency Planning – Evacuation plan

- 12.1 Client procedure
- 12.2 Site Procedure
- 12.3 Emergency response numbers

13. SHE Communications

- 13.1 Safety/Toolbox talks
- 13.2 Incident Recall

14. Safe Working Procedures

- 14.1 Method Statements
- 14.2 Safe Operating Procedures
- 14.3 Task/Job observations
- 14.4

15. Fall Protection Plan

- 15.1 Documented fall protection plan
- 15.2 Rescue Plan
- 15.3 Training/Certification
- 15.4 Fall arrest and protection equipment

16. Personal Protective Equipment and Clothing

- 16.1 PPE required
- 16.2 PPE proof of issue

17. Project security

- 17.1 Security risks identified
- 17.2 Access control

18. Environmental Management Plan

Note: TFR will obtain Environmental authorisation (EIA and EMP) and permits from the relevant authority (when necessary) prior to commencement of the project (e.g Construction)

Provide procedure of the following:

- 18.1 Control of Dust
- 18.2 Noise Pollution Control
- 18.3 Waste management
- 18.4 Environmental Incident Management (Sect 30 NEMA)
- 18.5 Contamination of surface and underground water
- 18.6 Soil Contamination
- 18.7 Storm Water Drainage
- 18.8 Environmental Cleanup and Rehabilitation
- 18.9 Environment monitoring
- 18.10 Environmental training and awareness
- 18.11 Provision for Environmental Cleanup and Rehabilitation Cost (Budget)

19. Tools and Material that will be required during the painting of Signalling Equipment

1. Scrapers
2. Wire brushes
3. Scouring pads (e.g. Scotch Handy Pads)
4. Abrasive paper to remove loose paint and rust.
5. Block brushes (150 mm) for application of degreasing solution.
6. Pressure pump (e.g. garden spray pump) for water to rinse after washing and degreasing.
7. Wet film thickness gauge, (we supply these free of charge).
8. Suitable soft long hair paint brushes (50 mm wide) to apply the coating.
9. Plastic buckets (2 litres) with lids for decanting paint and to clean brushes.
10. Masking tape 25 mm wide.
11. Paint
12. Bakkie for material and tools transportation
13. Angle Grinder – for surface preparation
14. Generator

"PREVIEW COPY ONLY"

SECTION 4

I/We quote as follows for the goods required, on a "delivered nominated destination" basis, excluding VAT:

SCHEDULE OF QUANTITIES AND PRICES

Table of Signalling Equipment to be painted

14.1 LEYBANK STATION

Item No	Equipment Description	Qty	Unit of Measure	Machine Number	Unit Price
	PART A - LEYBANK				
1.	Points Machine with their Junction Box	1	EA	1305W	
		1	EA	1315W	
2.	Signals (With their transformer boxes.)	1	EA	1134G	
		1	EA	1234G	
		1	EA	1254G	
		1	EA	1356G	
		1	EA	1334G	
		1	EA	1354G	
		1	EA	1454G	
		1	EA	X1358G	
3.	Track Circuit (2x track side boxes. And 2x surface area on rail which is length 300mm breadth 90mm)	1	EA	1305T	
	Track Circuit (2x track side boxes. And 2x surface area on rail which is	1	EA	1315T	

Respondent's Signature

Date & Company Stamp

	length 300mm breadth 90mm)				
	Track Circuit (2x track side boxes. And 2x surface area on rail which is length 300mm breadth 90mm)	1	EA	1356T	
	Track Circuit (2x track side boxes. And 2x surface area on rail which is length 300mm breadth 90mm)	1	EA	1454T	
	2x surface area on rail which is length 300mm breadth 90mm)	1	EA	1234T	
	2x surface area on rail which is length 300mm breadth 90mm)	1	EA	A1254T	
	2x surface area on rail which is length 300mm breadth 90mm)	1	EA	1254T	
4.	APPARATUS CASES - with 440V boxes.	1	EA	A2595	
		1	EA	A2596	
		1	EA	A2597	
		1	EA	A2598	
		1	EA	A2599	
		1	EA	A2600	
5.	Crank Handle Boxes	1	EA	CH3	
TOTAL PRICE FOR PART A					R

 Respondent's Signature

 Date & Company Stamp

14.2 WESKAS

Item No	Equipment Description	Qty	Unit	Machine Number	Unit Price
	Part B - WESKAS				
1.	Points Machine with their Junction Box	1	EA	1653W	
		1	EA	1635W	
		1	EA	1605W	
		1	EA	1631W	
		1	EA	1659W	
		1	EA	1641W	
		1	EA	1693W	
		1	EA	1683W	
		1	EA	1651W	
		1	EA	1621W	
		1	EA	1689W	
2.	Signals (With their transformer boxes.)	1	EA	X1360G	
		1	EA	1462G	
		1	EA	1540G	
		1	EA	1642G	
		1	EA	1640G	
		1	EA	1534G	

Respondent's Signature

Date & Company Stamp

		1	EA	1634G	
		1	EA	1654G	
		1	EA	1660G	
		1	EA	1664G	
		1	EA	1662G	
		1	EA	1762G	
3.	Track Circuit (2x track side boxes. And 2x surface area on rail which is length 300mm breadth 90mm)	1	EA	1640T	
	Track Circuit (2x track side boxes. And 2x surface area on rail which is length 300mm breadth 90mm)	1	EA	1462T	
	Track Circuit (2x track side boxes. And 2x surface area on rail which is length 300mm breadth 90mm)	1	EA	1634T	
	Track Circuit (2x track side boxes. And 2x surface area on rail which is length 300mm breadth 90mm)	1	EA	1635T	
	Track Circuit (2x track side boxes. And 2x surface area on rail which is length 300mm breadth 90mm)	1	EA	1605T	
	Track Circuit (2x track side boxes. And 2x surface area on rail which is length 300mm breadth 90mm)	1	EA	1631T	
	Track Circuit (2x track side boxes. And 2x surface area on rail which is length 300mm breadth 90mm)	1	EA	1641T	
	Track Circuit (2x track side boxes. And 2x surface area on rail which is length 300mm breadth 90mm)	1	EA	1621T	
	Track Circuit (2x track side boxes. And 2x surface area on rail which is length 300mm breadth 90mm)	1	EA	1651T	
	Track Circuit (2x track side boxes. And 2x surface area on rail which is length 300mm breadth 90mm)	1	EA	1693T	

Respondent's Signature

Date & Company Stamp

	300mm breadth 90mm)				
	Track Circuit (2x track side boxes. And 2x surface area on rail which is length 300mm breadth 90mm)	1	EA	1662T	
	Track Circuit (2x track side boxes. And 2x surface area on rail which is length 300mm breadth 90mm)	1	EA	1660T	
4.	APPARATUS CASES - with 440V boxes.	1	EA	A2608	
		1	EA	A2607	
		1	EA	A2610	
		1	EA	A2611	
		1	EA	A2612	
		1	EA	A2614	
5.	Crank Handle Boxes	1	EA	CH5	
TOTAL PRICE FOR PART B					R

 Respondent's Signature

 Date & Company Stamp

14.3 MYNHOOP

Item No	Equipment Description	QTY	Unit	Machine Number	Per Price Per Unit
	PART C - MYNHOOP STATION				
1.	Points Machine with their Junction Box	1	EA	1321W	
		1	EA	1331W	
		1	EA	1379W	
		1	EA	1369W	
		1	EA	1381W	
		1	EA	1391W	
2.	Signals (With their transformer boxes.)	1	EA	1140G	
		1	EA	1142G	
		1	EA	1240G	
		1	EA	1242G	
		1	EA	1260G	
		1	EA	1262G	
		1	EA	1340G	
		1	EA	1342G	
		1	EA	1362G	
		1	EA	1360G	
		1	EA	1358G	

Respondent's Signature

Date & Company Stamp

3.	Track Circuit (2x track side boxes. And 2x surface area on rail which is length 300mm breadth 90mm)	1	EA	1358T	
	Track Circuit (2x track side boxes. And 2x surface area on rail which is length 300mm breadth 90mm)	1	EA	1360T	
	Track Circuit (2x track side boxes. And 2x surface area on rail which is length 300mm breadth 90mm)	1	EA	1362T	
	Track Circuit (2x track side boxes. And 2x surface area on rail which is length 300mm breadth 90mm)	1	EA	1379T	
	Track Circuit (2x track side boxes. And 2x surface area on rail which is length 300mm breadth 90mm)	1	EA	1385T	
	Track Circuit (2x track side boxes. And 2x surface area on rail which is length 300mm breadth 90mm)	1	EA	1391T	
	Track Circuit (2x track side boxes. And 2x surface area on rail which is length 300mm breadth 90mm)	1	EA	1321T	
	Track Circuit (2x track side boxes. And 2x surface area on rail which is length 300mm breadth 90mm)	1	EA	1331T	
	Track Circuit (2x track side boxes. And 2x surface area on rail which is length 300mm breadth 90mm)	1	EA	1262T	
	Track Circuit (2x track side boxes. And 2x surface area on rail which is length 300mm breadth 90mm)	1	EA	1260T	
	Track Circuit (2x track side boxes. And 2x surface area on rail which is length 300mm breadth 90mm)	1	EA	A1260T	
	Track Circuit (2x track side boxes. And 2x surface area on rail which is length 300mm breadth 90mm)	1	EA	A1262T	
	Track Circuit (2x track side boxes. And 2x surface area on rail which is length 300mm breadth 90mm)	1	EA	1240T	
	Track Circuit (2x track side boxes. And 2x surface area on rail which is length 300mm breadth 90mm)	1	EA	1242T	

Respondent's Signature

Date & Company Stamp

	300mm breadth 90mm)				
4.	APPARATUS CASES	1	EA	A2603	
		1	EA	A2604	
		1	EA	A2605	
		1	EA	A2606	
		1	EA	A2606A	
5.	Crank Handle Boxes	1	EA	CH4	
TOTAL PARICE FOR PART C		R			

"PREVIEW COPY ONLY"

Respondent's Signature

Date & Company Stamp

14.4 RR3 "1/2"

Item No	Equipment Description	QTY	Unit	Machine Number	Unit Price
	PART D - RR3 STATION				
1.	Points Machine with their Junction Box	1	EA	1839W	
		1	EA	1849W	
		1	EA	1859W	
		1	EA	1831W	
		1	EA	1861W	
		1	EA	1833W	
		1	EA	1805W	
		1	EA	1823W	
		1	EA	1811W	
		1	EA	1853W	
		1	EA	1835W	
		1	EA	1863W	
		1	EA	1869W	
		1	EA	1881W	
		1	EA	1891W	
		1	EA	1927W	

Respondent's Signature

Date & Company Stamp

		1	EA	1969W	
		1	EA	1943W	
		1	EA	1953W	
		1	EA	2049W	
2.	Signals (With their transformer boxes.)	1	EA	1740G	
		1	EA	1840G	
		1	EA	1842G	
		1	EA	1844G	
		1	EA	1838G	
		1	EA	1834G	
		1	EA	1852G	
		1	EA	1854G	
		1	EA	1860G	
		1	EA	1862G	
		1	EA	1940G	
		1	EA	1942G	
		1	EA	1964G	
		1	EA	1956G	
3.	Track Circuit (2x track side boxes. And 2x surface area on rail which is length 300mm breadth 90mm)	1	EA	1840T	
	Track Circuit (2x track side boxes. And 2x surface area on rail which is length	1	EA	1762T	

Respondent's Signature

Date & Company Stamp

	300mm breadth 90mm)				
	Track Circuit (2x track side boxes. And 2x surface area on rail which is length 300mm breadth 90mm)	1	EA	1849T	
	Track Circuit (2x track side boxes. And 2x surface area on rail which is length 300mm breadth 90mm)	1	EA	1831T	
	Track Circuit (2x track side boxes. And 2x surface area on rail which is length 300mm breadth 90mm)	1	EA	1805T	
	Track Circuit (2x track side boxes. And 2x surface area on rail which is length 300mm breadth 90mm)	1	EA	1833T	
	Track Circuit (2x track side boxes. And 2x surface area on rail which is length 300mm breadth 90mm)	1	EA	1823T	
	Track Circuit (2x track side boxes. And 2x surface area on rail which is length 300mm breadth 90mm)	1	EA	1811T	
	Track Circuit (2x track side boxes. And 2x surface area on rail which is length 300mm breadth 90mm)	1	EA	1835T	
	Track Circuit (2x track side boxes. And 2x surface area on rail which is length 300mm breadth 90mm)	1	EA	1863T	
	Track Circuit (2x track side boxes. And 2x surface area on rail which is length 300mm breadth 90mm)	1	EA	1854T	
	Track Circuit (2x track side boxes. And 2x surface area on rail which is length 300mm breadth 90mm)	1	EA	1869T	
	Track Circuit (2x track side boxes. And 2x surface area on rail which is length 300mm breadth 90mm)	1	EA	1860T	
	Track Circuit (2x track side boxes. And 2x surface area on rail which is length 300mm breadth 90mm)	1	EA	1891T	
	Track Circuit (2x track side boxes. And 2x surface area on rail which is length 300mm breadth 90mm)	1	EA	1862T	

Respondent's Signature

Date & Company Stamp

	Track Circuit (2x track side boxes. And 2x surface area on rail which is length 300mm breadth 90mm)	1	EA	C2058T	
4.	APPARATUS CASES	1	EA	A2615	
		1	EA	A2616	
		1	EA	A2617	
		1	EA	A2619	
5.	Crank Handle Boxes	1	EA	CH6	
		1	EA	CH7	

	SUMMARY OF TOTALS FOR ALL STATIONS	
A	LEYBANK STATION	R
B	WESKAS STATION	R
C	MYNHOOP STATION	R
D	RR3 "1/2"	R
	GRAND TOTAL (EXCLUDING VAT)	R
	VAT 1%	R
	TOTAL INCLUSIVE VAT	R

Delivery Lead-Time from date of purchase order : _____ **[days/weeks]**

Notes to Pricing:

- All Prices must be quoted in South African Rand, exclusive of VAT
- To facilitate like-for-like comparison bidders must submit pricing strictly in accordance with this price schedule and not utilise a different format. Deviation from this pricing schedule could result in a bid being disqualified.

Respondent's Signature

Date & Company Stamp

Please note that should you have offered a discounted price(s), Transnet will only consider such price discount(s) in the final evaluation stage if offered on an unconditional basis.

By signing this Quotation Form the Respondent is deemed to acknowledge that he/she has made himself/herself thoroughly familiar, and agrees, with all the conditions governing this RFQ, including those contained in any printed form stated to form part hereof, including but not limited to the documents stated below and Transnet SOC Ltd will recognise no claim for relief based on an allegation that the Respondent overlooked any such condition or failed properly to take it into account for the purpose of calculating tendered prices or otherwise:

1. Specifications and drawings included in this RFQ - if applicable; and
2. The following documents all of which are available on Transnet's website or upon request:
 - 2.1. General Bid Conditions;
 - 2.2. Standard RFQ Terms and Conditions for the Supply of Goods or Services to Transnet;
 - 2.3. Supplier Integrity Pact;
 - 2.4. Non-disclosure Agreement; and
 - 2.5. Vendor Application Form and all supporting documents (first time vendors only)

Alternatively, for all existing vendors, please provide vendor number(s) here:

Transnet Operating Division	Unique Vendor Number	Yes / No
Transnet Group		
TFR, etc.		

In the Yes/No column above, please confirm that all the information e.g. company address and contact details, banking details etc. are still correct as at the time of allocation of the vendor number(s). Alternatively, Respondents are required to provide the updated information with their bid submission.

SIGNED at _____ on this _____ day of _____ 20____

SIGNATURE OF WITNESSES

ADDRESS OF WITNESSES

1 _____

Name _____

2 _____

Name _____

SIGNATURE OF RESPONDENT'S AUTHORISED REPRESENTATIVE: _____

NAME: _____

DESIGNATION: _____

Respondent's Signature

Date & Company Stamp

SECTION 5**RFQ DECLARATION AND BREACH OF LAW FORM**

NAME OF ENTITY: _____

We _____ do hereby certify that:

1. Transnet has supplied and we have received appropriate responses to any/all questions [as applicable] which were submitted by ourselves for RFQ Clarification purposes;
2. we have received all information we deemed necessary for the completion of this Request for Quotation [RFQ];
3. we have been provided with sufficient access to the existing Transnet facilities/sites and any and all relevant information relevant to the Supply of the Goods as well as Transnet information and Employees, and has had sufficient time in which to conduct and perform a thorough due diligence of Transnet's operations and business requirements and assets used by Transnet. Transnet will therefore not consider or permit any pre- or post-contract verification or any related adjustment to pricing, service levels or any other provisions/conditions based on any incorrect assumptions made by the Respondent in arriving at his Bid Price.
4. at no stage have we received additional information relating to the subject matter of this RFQ from Transnet sources, other than information formally received from the designated Transnet contact(s) as nominated in the RFQ documents;
5. we are satisfied, insofar as our entity is concerned, that the processes and procedures adopted by Transnet in issuing this RFQ and the requirements requested from Bidders in responding to this RFQ have been conducted in a fair and transparent manner; and
6. furthermore, we declare that a family, business and/or social relationship **exists / does not exist** [delete as applicable] between an owner / member / director / partner / shareholder of our entity and an employee or board member of the Transnet Group including any person who may be involved in the evaluation and/or adjudication of this Bid.
7. In addition, we declare that an owner / member / director / partner / shareholder of our entity **is / is not** [delete as applicable] an employee or board member of the Transnet Group.
8. If such a relationship as indicated in paragraph 6 and/or 7 exists, the Respondent is to complete the following section:

FULL NAME OF OWNER/MEMBER/DIRECTOR/
PARTNER/SHAREHOLDER:

ADDRESS:

Indicate nature of relationship with Transnet:

[Failure to furnish complete and accurate information in this regard will lead to the disqualification of a response and may preclude a Respondent from doing future business with Transnet]

9. We declare, to the extent that we are aware or become aware of any relationship between ourselves and Transnet [other than any existing and appropriate business relationship with Transnet] which could unfairly advantage our entity in the forthcoming adjudication process, we shall notify Transnet immediately in writing of such circumstances.

BREACH OF LAW

10. We further hereby certify that I/we **have/have not been** [delete as applicable] found guilty during the preceding 5 [five] years of a serious breach of law, including but not limited to a breach of the Competition Act, 89 of 1998, by a court of law, tribunal or other administrative body. The type of breach that the Respondent is required to disclose excludes relatively minor offences or misdemeanours, e.g. traffic offences. This includes the imposition of an administrative fine or penalty.

Where found guilty of such a serious breach, please disclose:

NATURE OF BREACH:

DATE OF BREACH: _____

Furthermore, I/we acknowledge that Transnet SOC Ltd reserves the right to exclude any Respondent from the bidding process, should that person or entity have been found guilty of a serious breach of law, tribunal or regulatory obligation.

SIGNED at _____ on this _____ day of _____ 20____

For and on behalf of _____ _____ duly authorised hereto	AS WITNESS:
Name: _____	Name: _____
Position: _____	Position: _____
Signature: _____	Signature: _____
Date: _____	Registration No of Company/CC _____
Place: _____	Registration Name of Company/CC _____

Section 6: SUPPLIER DECLARATION FORM

Respondents are to furnish the following documentation and complete the Vendor Application Form below:

1. **Original** cancelled cheque **OR** letter from the Respondent's bank verifying banking details [**with bank stamp**]
2. **Certified copy** of Identity Document(s) of Shareholders/Directors/Members [*where applicable*]
3. **Certified copies** of the relevant company registration documents from Companies and Intellectual Property Commission (CIPC)
4. **Certified copies** of the company's shareholding/director's portfolio
5. **Original** letterhead confirm physical and postal addresses
6. **Original** valid SARS Tax Clearance Certificate [RSA entities only]
7. **Certified copy** of VAT Registration Certificate [RSA entities only]
8. **A valid and original** B-BBEE Verification Certificate **or** sworn affidavit **or certified copy** thereof meeting the requirements for B-BBEE compliance as per the B-BBEE Codes of Good Practice; **Certified copy** of valid Company Registration Certificate [*if applicable*]

Note: No agreement shall be awarded to any South African Respondent whose tax matters have not been declared by SARS to be in order

Company Trading Name							
Company Registered Name							
Company Registration Number Or ID Number If A Sole Proprietor							
Form of entity	<input type="checkbox"/> Co-Operative	<input type="checkbox"/> Trust	<input type="checkbox"/> Pty Ltd	<input type="checkbox"/> Limited	<input type="checkbox"/> Partnership	<input type="checkbox"/> Sole Proprietor	
How many years has your company been in business							
VAT number (if registered)							
Company Telephone Number							
Company Fax Number							
Company E-Mail Address							
Company Website Address							
Bank Name				Branch & Branch code			
Account Holder				Bank account number			
Postal Address						Code	
						Code	
Physical Address						Code	
						Code	

Respondent's Signature

Date & Company Stamp

Contact Person					
Designation					
Telephone					
Email					
Annual Turnover Range (Last Financial Year)	< R5 Million		R5-35 million		> R35 million
Does Your Company Provide	Products		Services		Both
Area Of Delivery	National		Provincial		Local
Is Your Company A Public Or Private Entity			Public		Private
Does Your Company Have A Tax Directive Or IRP30 Certificate			Yes		No
Main Product Or Service Supplied (E.G.: Stationery/Consulting)					

BEE Ownership Details					
% Black Ownership		% Black women ownership		% Disabled person/s ownership	
Does your company have a BEE certificate		Yes		No	
What is your broad based BEE status (Level 1 to 9 / Unknown)					
How many personnel does the firm employ		Permanent		Part time	

Transnet Contact Person	
Contact number	
Transnet operating division	

Duly Authorised To Sign For And On Behalf Of Firm / Organisation			
Name		Designation	
Signature		Date	

Stamp And Signature Of Commissioner Of Oath			
Name		Date	
Signature		Telephone	

Respondent's Signature

Date & Company Stamp

Section 7: CERTIFICATE OF ATTENDANCE OF SITE MEETING / RFQ BRIEFING

**FOR THE PROVISION TO PAINT SIGNALLING EQUIPMENT AT LEYBANK, WESKAS, MYNHOOP
AND RR3 UNDER THE CONTROL DEPOT ENGINEER, WITBANK**

It is hereby certified that –

1. _____

2. _____

Representative(s) of _____ *[name of entity]*

attended the site meeting / RFQ briefing in respect of the proposed Services to be supplied in terms of
this RFQ on _____ 20____

TRANSNET'S REPRESENTATIVE

RESPONDENT'S REPRESENTATIVE

DATE

DATE _____

ANNEXURE A : B-BBEE PREFERENCE POINTS CLAIM FORM

This preference form contains general information and serves as a claim for preference points for Broad-Based Black Economic Empowerment [**B-BBEE**] Status Level of Contribution.

1. INTRODUCTION

- 1.1 A total of 20 preference points shall be awarded for B-BBEE Status Level of Contribution.
- 1.2 Failure on the part of a Bidder to fill in and/or to sign this form and submit a B-BBEE Verification Certificate from a Verification Agency accredited by the South African Accreditation System [**SANAS**] or a Registered Auditor approved by the Independent Regulatory Board of Auditors [**IRBA**] or an Accounting Officer as contemplated in the Close Corporation Act [**CCA**] together with the bid will be interpreted to mean that preference points for B-BBEE Status Level of Contribution are not claimed.
- 1.3 Transnet reserves the right to require of a Bidder, either before a bid is adjudicated or at any time subsequently, to substantiate any claim in regard to preferences, in any manner required by Transnet.

2. GENERAL DEFINITIONS

- 2.1 **"all applicable taxes"** include value-added tax, pay as you earn, income tax, unemployment insurance fund contributions and skills development levies;
- 2.2 **"B-BBEE"** means broad-based black economic empowerment as defined in section 1 of the Broad-Based Black Economic Empowerment Act;
- 2.3 **"B-BBEE status of contributor"** means the B-BBEE status received by a measured entity based on its overall performance using the relevant scorecard contained in the Codes of Good Practice on Black Economic Empowerment, issued in terms of section 9(1) of the Broad-Based Black Economic Empowerment Act;
- 2.4 **"bid"** means a written offer in a prescribed or stipulated form in response to an invitation by Transnet for the provision of goods, works or services;
- 2.5 **"Broad-Based Black Economic Empowerment Act"** means the Broad-Based Black Economic Empowerment Act, 2003 [Act No. 53 of 2003];
- 2.6 **"comparative price"** means the price after the factors of a non-firm price and all unconditional discounts that can utilised have been taken into consideration;
- 2.7 **"consortium or joint venture"** means an association of persons for the purpose of combining their expertise, property, capital, efforts, skills and knowledge in an activity for the execution of a contract;
- 2.8 **"contract"** means the agreement that results from the acceptance of a bid by Transnet;
- 2.9 **"EME"** means any enterprise with an annual total revenue of R5 [five] million or less as per the 2007 version of the B-BBEE Codes of Good Practice and means any enterprise with an annual total revenue of R10 [ten] million or less as per the Revised Codes of Good Practice issued on 11 October 2013 in terms of Government Gazette No. 36928;
- 2.10 **"firm price"** means the price that is only subject to adjustments in accordance with the actual

increase or decrease resulting from the change, imposition, or abolition of customs and excise duty and any other duty, levy, or tax, which, in terms of the law or regulation, is binding on the contractor and demonstrably has an influence on the price of any supplies, or the rendering costs of any service, for the execution of the contract;

- 2.11 **"functionality"** means the measurement according to predetermined norms, as set out in the bid documents, of a service or commodity that is designed to be practical and useful, working or operating, taking into account, among other factors, the quality, reliability, viability and durability of a service and the technical capacity and ability of a bidder;
- 2.12 **"non-firm prices"** means all prices other than "firm" prices;
- 2.13 **"person"** includes reference to a juristic person;
- 2.14 **"QSE"** means any enterprise with an annual total revenue between R5 [five] million and R35 [thirty five] million as per the 2007 version of the B-BBEE Codes of Good Practice and means any enterprise with an annual total revenue of between R10 [ten] million and R50 [fifty] million as per the Revised Codes of Good Practice issued on 11 October 2013 in terms of Government Gazette No. 36928
- 2.15 **"rand value"** means the total estimated value of a contract in South African currency, calculated at the time of bid invitations, and includes all applicable taxes and excise duties;
- 2.16 **"subcontract"** means the primary contractor's assigning or leasing or making out work to, or employing another person to support such primary contractor in the execution of part of a project in terms of the contract;
- 2.17 **"total revenue"** bears the same meaning assigned to this expression in the Codes of Good Practice on Black Economic Empowerment, issued in terms of section 9(1) of the Broad-Based Black Empowerment Act and promulgated in the Government Gazette on 9 February 2007;
- 2.18 **"trust"** means the arrangement through which the property of one person is made over or bequeathed to a trustee to administer such property for the benefit of another person; and

3. **"trustee"** means any person, including the founder of a trust, to whom property is bequeathed in
- ADJUDICATION USING A POINT SYSTEM**

- 3.1 The Bidder obtaining the highest number of total points for the evaluation criteria as enumerated in Section 2 of the RFP will be awarded the contract, unless objective criteria justifies the award to another bidder.
- 3.2 Preference points shall be calculated after prices have been brought to a comparative basis taking into account all factors of non-firm prices and all unconditional discounts.
- 3.3 Points scored will be rounded off to 2 [two] decimal places.
- 3.4 In the event of equal points scored, the Bid will be awarded to the Bidder scoring the highest number of preference points for B-BBEE.
- 3.5 However, when functionality is part of the evaluation process and two or more Bids have scored equal points including equal preference points for B-BBEE, the successful Bid will be the one scoring the highest score for functionality.
- 3.6 Should two or more Bids be equal in all respect, the award shall be decided by the drawing of lots.

4. POINTS AWARDED FOR B-BBEE STATUS LEVEL OF CONTRIBUTION

- 4.1 In terms of the Preferential Procurement Regulations, 2011, preference points shall be awarded to a Bidder for attaining the B-BBEE status level of contribution in accordance with the table below:

B-BBEE Status Level of Contributor	Number of Points [Maximum 20]	Number of Points [Maximum 10]
1	20	10
2	18	9
3	16	8
4	12	5
5	8	4
6	6	3
7	4	2
8	2	1
Non-compliant contributor	0	0

- 4.2 Bidders who qualify as EMEs in terms of the 2007 version of the Codes of Good Practice must submit a certificate issued by an Accounting Officer as contemplated in the CCA or a Verification Agency accredited by SANAS or a Registered Auditor. Registered auditors do not need to meet the prerequisite for IRBA's approval for the purpose of conducting verification and issuing EME's with B-BBEE Status Level Certificates.
- 4.3 Bidders who qualify as EMEs in terms of the Revised Codes of Good Practice issued on 11 October 2013 in terms of Government Gazette No. 36928 are only required to obtain a sworn affidavit on an annual basis confirming that the entity has an Annual Total Revenue of R10 million or less and the entity's Level of Black ownership.
- 4.4 In terms of the 2007 version of the Codes of Good Practice, Bidders other than EMEs must submit their original and valid B-BBEE status level verification certificate or a certified copy thereof, substantiating their B-BBEE rating issued by a Registered Auditor approved by IRBA or a Verification Agency accredited by SANAS.
- 4.5 In terms of the Revised Codes of Good Practice issued on 11 October 2013 in terms of Government Gazette No. 36928, Bidders who qualify as QSEs are only required to obtain a sworn affidavit on an annual basis confirming that the entity has an Annual Total Revenue of R50 million or less and the entity's Level of Black ownership. Large enterprises must submit their original and valid B-BBEE status level verification certificate or a certified copy thereof, substantiating their B-BBEE rating issued by a Registered Auditor approved by IRBA or a Verification Agency accredited by SANAS.
- 4.6 A trust, consortium or joint venture will qualify for points for its B-BBEE status level as a legal entity, provided that the entity submits its B-BBEE status level certificate.
- 4.7 A trust, consortium or joint venture will qualify for points for their B-BBEE status level as an unincorporated entity, provided that the entity submits their consolidated B-BBEE scorecard as if they were a group structure and that such a consolidated B-BBEE scorecard is prepared for every separate bid.
- 4.8 Tertiary institutions and public entities will be required to submit their B-BBEE status level certificates in terms of the specialised scorecard contained in the B-BBEE Codes of Good Practice.

- 4.9 A person will not be awarded points for B-BBEE status level if it is indicated in the Bid documents that such a Bidder intends subcontracting more than 25% [twenty-five per cent] of the value of the contract to any other enterprise that does not qualify for at least the same number of points that such a Bidder qualifies for, unless the intended subcontractor is an EME that has the capability and ability to execute the subcontract.
- 4.10 A person awarded a contract may not subcontract more than 25% [twenty-five per cent] of the value of the contract to any other enterprise that does not have an equal or higher B-BBEE status level than the person concerned, unless the contract is subcontracted to an EME that has the capability and ability to execute the subcontract.
- 4.11 Bidders are to note that in terms of paragraph 2.6 of Statement 000 of the Revised Codes of Good Practice issued on 11 October 2013 in terms of Government Gazette No. 36928, any representation made by an entity about its B-BBEE compliance must be supported by suitable evidence or documentation. As such, Transnet reserves the right to request such evidence or documentation from Bidders in order to verify any B-BBEE recognition claimed.

5. B-BBEE STATUS AND SUBCONTRACTING

5.1 Bidders who claim points in respect of B-BBEE Status Level of Contribution must complete the following:

B-BBEE Status Level of Contribution _____ = _____ [maximum of 20 points]

Note: Points claimed in respect of this paragraph 5.1 must be in accordance with the table reflected in paragraph 4.1 above and must be substantiated by means of a B-BBEE certificate issued by a Verification Agency accredited by SANAS or a Registered Auditor approved by IRBA or a sworn affidavit in the case of an EME or QSE.

5.2 Subcontracting:

Will any portion of the contract be subcontracted? YES/NO [delete which is not applicable]

If YES, indicate:

- (i) What percentage of the contract will be subcontracted?%
- (ii) The name of the subcontractor
- (iii) The B-BBEE status level of the subcontractor
- (iv) Is the subcontractor an EME? YES/NO

5.3 Declaration with regard to Company/Firm

- (i) Name of Company/Firm.....
- (ii) VAT registration number.....
- (iii) Company registration number.....
- (iv) Type of Company / Firm [TICK APPLICABLE BOX]
 - ☐ Partnership/Joint Venture/Consortium
 - ☐ One person business/sole propriety
 - ☐ Close Corporations
 - ☐ Company (Pty) Ltd

(v) Describe Principal Business Activities

.....

(vi) Company Classification [TICK APPLICABLE BOX]

☐ Manufacturer

☐ Supplier

☐ Professional Service Provider

☐ Other Service Providers, e.g Transporter, etc

(vii) Total number of years the company/firm has been in business.....

BID DECLARATION

I/we, the undersigned, who warrants that he/she is duly authorised to do so on behalf of the company/firm, certify that points claimed, based on the B-BBEE status level of contribution indicated in paragraph 4 above, qualifies the company/firm for the preference(s) shown and I / we acknowledge that:

- (i) The information furnished is true and correct.
- (ii) In the event of a contract being awarded as a result of points claimed as shown in paragraph 6 above, the contractor may be required to furnish documentary proof to the satisfaction of Transnet that the claims are correct.
- (iii) If the B-BBEE status level of contribution has been claimed or obtained on a fraudulent basis or any of the conditions of contract have not been fulfilled, Transnet may, in addition to any other remedy it may have:
 - (a) disqualify the person from the bidding process;
 - (b) recover costs, losses or damages it has incurred or suffered as a result of that person's conduct;
 - (c) cancel the contract and claim any damages which it has suffered as a result of having to make less favourable arrangements due to such cancellation;
 - (d) restrict the Bidder or contractor, its shareholders and directors, and/or associated entities, or only the shareholders and directors who acted in a fraudulent manner, from obtaining business from Transnet for a period not exceeding 10 years, after the *audi alteram partem* [hear the other side] rule has been applied; and/or
 - (e) forward the matter for criminal prosecution.

WITNESSES:

1.

2.

SIGNATURE OF BIDDER

DATE:.....

COMPANY NAME:

ADDRESS:.....

ANNEXURE B : SCHEDULE OF PLANT, EQUIPMENT AND TEAMS

Schedule of major plant and equipment to be used in the execution of this agreement in terms of the Agreement Conditions and specifications. The respondent must state which plant is immediately available and which will be ordered for. A complete list of herbicides and the method of control to be used must also be specified.

(i) Plant immediately available for work tendered for :

(ii) Plant on order and which will be available for work tendered for :

(iii) Plant to be acquired for the work tendered for :

ANNEXURE C: REFERENCES

Please indicate below the company names and contact details of existing customers whom Transnet may contact to seek third party evaluations of your current service levels:

[illegible]

Respondent's Signature

Date & Company Stamp

ANNEXURE D - CLAUSE BY CLAUSE COMPLIANCE

The compliance response is to contain ONLY the following statements, "Noted", "Comply" or "Do not comply".

Noted is to be applied against statements and either of the other responses for other clauses. Where either "Do not comply" are applied, remarks as to the reason for the deviation from the requirement are required.

CLAUSE NO	COMPLY YES/ NO	COMMENTS
1.		
2.		
2.1		
2.2		
2.3		
3.		
3.1		
3.2		
3.3		
3.4		
3.5		
4.		
5.		
6.		
7.		
8.		
9.		
10.		
11.		
12.		
13.		
13.1		
13.2		
13.3		
13.4		
13.5		
13.6		

Respondent's Signature

Date & Company Stamp